



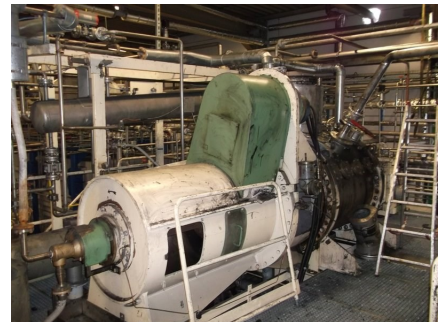
TROOSTWIJK
INDUSTRIAL AUCTIONEERS & VALUERS SINCE 1930

ONLINE AUCTION

DECHOW AUKTIONEN | Großmaschinen, Zubehör und Werkstattausstattung (DE)

Äußere Speicherstr. 1 - 01587 **Riesa**
(Brand GmbH)

Closing date: Wednesday **17 JULY** starting 10:00



Bidding only on the internet!

28-06-19 12.09

www.TroostwijkAuctions.com



TROOSTWIJK
INDUSTRIAL AUCTIONEERS & VALUERS SINCE 1930

**Wednesday 17 July 2019 DECHOW AUKTIONEN | Großmaschinen, Zubehör und
Werkstattausrüstung
Special Conditions**

Closing date	Wednesday 17 July 2019 starting 10:00 CET
Viewing	Monday 8 July from 09:00 until 12:00 CET Monday 8 July from 13:00 until 16:00 CET Tuesday 9 July from 09:00 until 12:00 CET Tuesday 9 July from 13:00 until 16:00 CET Wednesday 10 July from 09:00 until 12:00 CET Wednesday 10 July from 13:00 until 16:00 CET Thursday 11 July from 09:00 until 12:00 CET Thursday 11 July from 13:00 until 16:00 CET Friday 12 July from 09:00 until 12:00 CET Friday 12 July from 13:00 until 16:00 CET Brand GmbH Äußere Speicherstr. 1 01587 Riesa, Germany Auktionshaus Wilhelm Dechow GmbH Kapstadtring 7 22297 Hamburg, Germany Phone: +49 40 431300770 E-mail: support@dechow.de
Company organising this Online Auction	
Markup	18.00%
VAT	19.00%
Collection	from Monday 29 July until Sunday 04 August By appointment Brand GmbH Äußere Speicherstr. 1 01587 Riesa, Germany
Collection details	The buyer is fully responsible for the dismantling, loading and transportation of the bought lots. Troostwijk Auktionen GmbH & Co. KG cannot accept any responsibility unless indicated otherwise. The collection/pick-up will only take place on the mentioned delivery date/time and address. Please show your purchase agreement upon collection.
Information VAT	Buyers from Germany have to pay the VAT. All foreign buyers from countries belonging to the European Community must inform us of their VAT number. If a buyer does not furnish this proof, the auctioneer has to charge the legal German VAT. This VAT amount cannot be refunded. Foreign buyers from countries not belonging to the European Community have to pay the legal German VAT as deposit to the auctioneer. After receipt of the original customs documents, which must be stamped officially to prove that the export has taken place, the auctioneer will refund the paid German VAT.
Payment	The invoice amount is due immediately after receipt of the invoice by bank transfer. The purchase price is to be paid exclusively to the trust account specified in the invoice.
Prolongation	If a bid is made in the last 5 minutes before the lot closes, the closing time of that lot will be extended with 5 minutes until no bids are made.
Combinations	All lots in a combination will be sold individually first. After the last lot is sold, the total of bids is raised 10%. This is the starting bid of the combination. If the combination is sold it overrules the individual bids, if not the individual bids are applicable.
Follow lots	After registration and login, lots can be 'followed' via 'My Troostwijk'. This option has been constrained to a maximum of 100 lots per user per auction.

www.TroostwijkAuctions.com



Subject to allocation and minimum prices	At certain auctions some lots will be sold under reserve or minimum/reserve prices have been set! The seller of the machines will be informed about the highest bids after the end of the auction sale. He will then decide if the lots will be sold for the prices realized. Each client will be informed latest 10 work days after the end of the online auction whether his bid is accepted or not. During these days all bids are binding. If a lot is sold under reserve or if you should not have met the minimum/reserve price yet, this is mentioned below the starting bid.
Terms and Conditions of Sale	For the auction the General Terms and Conditions of Online Auction are applicable concerning the (possible) purchase of movable assets, in addition to these Special Conditions.
Contact	e-mail: support@dechow.de , Tel.: +49-40-4313007-70
Quantity, capacity, dimensions and weight of goods	Where a lot description contains details of quantities, capacities, dimensions or weights of the goods, these data are indicative only and no rights can be derived from this information. Bidders must satisfy themselves as to the accuracy of such data. Although the information contained herein was obtained from resources deemed reliable, the seller and Troostwijk make no warranty, expressed or implied as to the accuracy of the information.



Lot	Number Description	Starting Bid €
1	1 CNC portal milling machine Droop und Rein, FP160/2, year built; 1965/2003, inventory number; B11338, Conversion CNC 2003, control Heidenhain TNC 430, length measuring system Heidenhain LB 382 C, accuracy = +/- 0,005 mm, X-axis traverse 8500 mm, Y1 / Y2 axis headstock traverse 2100 mm, Z1 / Z2 axis quills traverse 400 mm, W axis cross beam traverse 1100 mm, S1 and S2 axis work spindle speed n = 20-1000 r/min, total weight approx. 80 t, The machine is already dismantled and can be inspected in our warehouse, location; 01587 Riesa	6,000.00
2	1 Planetary mixer Mischtechnik Hoffmann, RWH 200/VA/VA/FU, year built; 2008, inventory number; B12511, Condition as new, few operating hours, batch size; max. 200 litres, Siemens Symatic Multi Panel Touch / control / frequency converter, 1x cleaning container and 1x mixing container double-walled for cooling/heating (approx. H-640 mm (without rollers); Ø 650/720 mm), total approx. 2800 x 1800 H 2900 mm, weight approx. 6.5 to, location; 01587 Riesa	5,500.00
3	1 contact dryers Cdiscotherm Group, B 630, year built; 1993, inventory number; B12798, for highly viscous or pasty products, manufacturer Discotherm Group, type B 630 year 1993, consisting of; Dryer with vapour dome, drive Renold hydraulic motor, 27KW, 1500 rpm, EEx ell T3, condenser Jäggi Bern, year of construction 1992, 15 m ² (tube side 6,6m ² jacket side 7,5m ²), vacuum pumping unit PL50M 4B Ex, with SIHI liquid ring vacuum pump LEMA 50, 1,85 KW, phase separator Jaeger, 1000 l, side channel pump SIHI AKVQ, 0,55 KW, 1450 rpm, EEx ell T3, 12m ³ /h, operating instructions, technical data, drawings, steel construction, stairs, location; 01587 Riesa	5,000.00
4	1 Mobile screening plant Broder Maschinenbau GmbH, Screen 2000, year built; 2005, inventory number; B11281, Screening capacity up to 250 t/h depending on screen size, screen size; 2750 x 1500 mm, 4.125 m ² , screen inclination; adjustable 20° to 40°, main drive; CAT 112 PS diesel engine, hopper capacity; up to 7 m ³ heaped, little run, well preserved and functional, year of construction 2005, transport length; 14.7 m, transport width; 2500 mm, loading width; 4200 mm, loading height; 3900 mm, total weight approx. 20 t, location; 01587 Riesa	4,500.00
5	1 Planetary mixer Mischtechnik Hoffmann, RWH 100/VA/VA/FU, year built; 2005, inventory number; B12564, Condition as good as new, very few operating hours, gross volume; 140 litres, batch size; 35 to 100 litres, max. Pressure; Vacuum 10mbar absolute up to 1200mbar absolute, Max. Operating temperature; 80°C, operating voltage; 3x 400 V / 50 Hz, control voltage; 230 V / 50 Hz resp. 24 V DC, with Siemens Symatic Multi Panel Touch / Siemens Simatic control / Siemens frequency converter, with 2x mobile cylinder swap container (140 L)with cooling jacket (20 L) made of stainless steel 1.4404, with 2 eccentrically running mixing tools & 1 pc. Wiper with plastic strip, documentation & operating instructions for the machine available, total approx. 2300 x 1600 H 2500 mm, weight approx. 5.5 to, location; 01587 Riesa	4,500.00
6	1 belt dryers Bürkle Process Technologies, TRDUE 11968/10, year built; 2008, inventory number; B12574, Condition as new, inner chamber & transport rollers made of stainless steel, dryer surface approx. 10 x 1,2 meters, max. drying temperature; 160 °C, heat output; 3x 52,5 kW, heating medium; 400 V, max. Heating surface temperature; 300 °C, air velocity; 20 m/s, circulating air; 3x 4175 m ³ /h, motor power; 6x 2.2 kW, supply air; 3x 675 m ³ /h, minimum exhaust air volume flow at 20 °C; 3x 675 m ³ /h, motor power; 3x 0.37 kW, total inlet opening approx. 1400 x 300 mm, inlet opening between the running rails 2x approx. 1200 x 120 mm, control/switch cabinet, 3x 400 V; 50 Hz; 24 V DC; 262/300 A; 172 kW, SEW-Eurodrive inverter & Siemens Simatic S7, total size 3x approx. 3500 x 2700 H 1800 mm, location; 01587 Riesa	3,750.00
7	2 pellet mills Paladin (Andritz), 600, year built; 1990, inventory number; B12630, for feed pellets, with conditioner, connected load 2x55 kW, capacity / h - cow feed 6-7 t - rabbit feed 3-4 t - small animal feed 3 t, - horse feed 4-5 t, switch cabinet with SPS Siemens S7 system control, year of construction 2012, 12 matrices, location; 01587 Riesa	3,500.00



Lot	Number	Description	Starting Bid €
8	1	pasteurisation plant Anlagenbau AG Worb, year built; 2001, inventory number; B12397, to heat, pasteurize, cool juice. The plant was used to pasteurize apple juice. Capacity approx. 8500 litres per hour, components; Tubular heat exchanger and plate heat exchanger, 1 stainless steel tank with side stirring agitator, 1 pump type R905-2W, 1 stainless steel coolant expansion tank Odenwald year 1992, volume 112 litres, 1 buffer tank, 3 Alpha Laval centrifugal pumps, type LKH114155 (11 kW) & type LKH113555 (7,5 kW), 1 stainless steel control cabinet, space requirement approx. 6000 x 4400 x 3700 mm, the plant is dismantled, total plant approx. 6000 x 4400 x 3700 mm, the plant is dismantled., location; 01587 Riesa	3,200.00
9	1	biogas generator Zantingh Groep Holland, Tantec 630 HR, year built; 1997, inventory number; B11219, Generator manufacturer Stamford, type; HC.1624M2, power; 910 kVA, 1500 rpm, 400 V, 1313,5 A, 50 Hz, IP22, diesel engine / gas engine, manufacturer Waukesha, model P48GLD, fuel natural gas / biogas, power 726 kW, 1500 rpm, including control cabinet, without container, weight approx. 17.000 kg, location; 01587 Riesa	2,800.00
10	1	Stainless steel screw press Ponndorf, 405-RG, year built; 1985, inventory number; B13275, Machine no. 17084, screen basket length approx. 1600 mm, conical from Ø approx. 400 mm to Ø approx. 250 mm, screw helix thickness approx. 15 mm, filling opening approx. 500 x 350 mm, outlet opening approx. 350 x 410 mm, outlet at bottom of the trough approx. Ø 120 mm, pressing chamber length approx. 1860 mm, 2 service flaps approx. 600 x 300 mm, SEW-Eurodrive variable speed geared motor, 380/660 V; 32.0/18.4 A; 50 Hz; IP54, power 15 kW; 1400/3-18 r/min, total approx. 5700 x 1000 H 1800 mm, location; 01587 Riesa	2,700.00
11	1	pasteurisation plant Anlagenbau AG Worb, year built; 1994, inventory number; B12398, to heat, pasteurize, cool juice. The plant was used for pasteurizing apple juice, capacity approx. 3300 litres per hour, components; Pipe heat exchanger and plate heat exchanger, 1 stainless steel tank with sideways stirring agitator, various pumps, 1 buffer tank, 1 stainless steel switchgear/control cabinet, space requirement total system approx. 6100 x 3000 x 3700 mm, the system is dismantled, location; 01587 Riesa	2,500.00
12	1	screw press Ponndorf, 404-RG, year built; 1980, inventory number; B13247, made of stainless steel, screen basket length approx. 1400 mm, conical from Ø approx. 300 mm to Ø approx. 200 mm, screw helix thickness approx. 15 mm, filling opening approx. 500 x 300 mm, outlet opening approx. 350 x 290 mm, outlet at bottom of trough approx. Ø 100 mm, adjustable geared motor with chain drive, NORD 400/690 V; 21,5/12,4 A; 50 Hz; IP55, power; 11 kW; 1460/3,3-24 r/min, total approx. 3300 x 1500 H 1550 r/min, power; 11 kW; 1460/3,3-24 r/min, total approx. 3300 x 1500 H 1550 r/min, screw helix thickness approx. 1550 mm, filling opening approx. 500 x 300 mm, outlet opening approx. 350 x 290 mm, outlet at bottom of trough approx., location; 01587 Riesa	2,400.00
13	1	press brake Mengele, C320-4B, year built; 1966, inventory number; 22366, year of construction 1966 (revision 2000), bending length 6000 mm, pressing force 350 t, sheet thickness max. 7.5 mm steel, weight approx. 45 - 50 t, location; 01587 Riesa	2,200.00
14	1	peeler centrifuge Peony, PPCS-555, year built; 2013, inventory number; B12838, Horizontal for chemical, pharmaceutical & food industry, drum diameter 1250 mm, volume 370 litres, capacity 555 kg, control and safety adapted to European regulations, CE marking and EC declaration of conformity issued by importer, location; 01587 Riesa	2,200.00
15	1	peeler centrifuge Peony, PPCS-555, year built; 2013, inventory number; B12838, Horizontal for chemical, pharmaceutical & food industry, drum diameter 1250 mm, volume 370 litres, capacity 555 kg, control and safety adapted to European regulations, CE marking and EC declaration of conformity issued by importer, location; 01587 Riesa	2,200.00



Lot	Number	Description	Starting Bid €
16	1	peeler centrifuge Peony, PPCS-555, year built; 2013, inventory number; B12838, Horizontal for chemical, pharmaceutical & food industry, drum diameter 1250 mm, volume 370 litres, capacity 555 kg, control and safety adapted to European regulations, CE marking and EC declaration of conformity issued by importer, location; 01587 Riesa	2,200.00
17	1	Washing and sorting plant for pulses inventory number; B11242, Vegetable washing plant for leguminous similar products, intake belt, leaf wind cleaner, sieve cleaner, circulating conveyor, wet washing channel, stone selection, wet sieve drum, water collecting trough with water cleaning drum and pump, discharge circulating conveyor, manufacturer; unknown, all parts in contact with product made of stainless steel, capacity approx. 10-15 to/h, the plant is dismantled, location; 01587 Riesa	2,000.00
18	1	belt dryers ZEH Praha, RPSOP 10.108.2, year built; 2004, inventory number; 23845, for small parts with manipulator, electric heating power 160 kVA, temperature 300 °C, dimensions L 12 m x W 2,5 m x H 2,2 m, weight approx. 9 t, location; 01587 Riesa	1,800.00
19	1	slewing car crane Jelcz, Hydros 30T, year built; 1974, inventory number; B10963, Load capacity max. 32,000 kg, fuel type diesel, gearbox manual, engine capacity 11,180 cm ³ , engine power 180 kW, permissible total weight 38,000 kg, vehicle axles 4 / 8x4, crane arm approx. 35 meters, total length with boom approx. 12,400 mm, total height with boom approx. 3700 mm, papers / documents available (in Polish), The vehicle currently has no TÜV (expired), crane is ready for use, location; 01587 Riesa	1,800.00
20	1	Magnetic drum separator Himstalkomplekt, PBM-PP-150/200, year built; 2010, inventory number; B11924 (A), for wet separation of high magnetic ores and separation of materials into magnetic and non-magnetic products, Manufacturer; Himstalkomplekt (Russia), Max. 250 t/h, permanent magnet alloy Nd-Fe-B, magnetic induction on the surface of the drum; 0,160, drum diameter; 1500 mm, drum length; 2000 mm, feed size, VM; 0-1, drive motor; 380 V; 22 A; 50 Hz; IP54, power; 11 kW; 1420 rpm, total approx. 3100 x 2400 x 2250 mm, weight approx. 3.600 kg, location; 01587 Riesa	1,800.00
21	1	Magnetic drum separator Himstalkomplekt, PBM-PP-150/200, year built; 2010, inventory number; B11924 (B), for wet separation of high magnetic ores and separation of materials into magnetic and non-magnetic products, Manufacturer; Himstalkomplekt (Russia), Max. 250 t/h, permanent magnet alloy Nd-Fe-B, magnetic induction on the surface of the drum; 0,160, drum diameter; 1500 mm, drum length; 2000 mm, feed size, VM; 0-1, drive motor; 380 V; 22 A; 50 Hz; IP54, power; 11 kW; 1420 rpm, total approx. 3100 x 2400 x 2250 mm, weight approx. 3.600 kg, location; 01587 Riesa	1,800.00
22	1	Aluminium melting furnace Striko Westofen, MH-750, year built; 1988, inventory number; B11409, hydraulic tilting, manufacturer STRIKO Westofen, with hopper, switch cabinet and hydraulic unit, volume approx. 750 kg, melting capacity max. approx. 500 kg/h, total size approx. 4.20 x 3.00 H 6.00 m, location; 01587 Riesa	1,700.00
23	1	drum screening machine Lohse, 6000x2250, inventory number; B12106, Total length 6350 mm, drum diameter 2240 mm, overall height 4810 mm, system width 3400 mm, screen perforation 1st zone; 8x60 mm, screen perforation 2nd zone; 6x40 mm, operating weight (filled); approx. 11000 kg, empty weight complete; approx. 9500 kg, stainless steel housing, Normstahl screen drum, three-phase AC motor drum drive, type R93DV 132M4, power 7.5 kW, motor speed 1430 rpm, drum speed; 10 rpm, connection; 230/400 V, rated current; 16 A, frequency; 50 Hz, degree of protection; IP54, location; 01587 Riesa	1,700.00



Lot	Number	Description	Starting Bid €
24	1	chain excavator Hyundai, Robex 280 LC, year built; 1999, inventory number; 28142, Crawler excavator, operating hours approx. 12300 h, 6 cylinder four-stroke diesel engine, engine model; Cummins 6BT 5,9 / 128 PS, chassis length approx.; 4900 mm, cab height approx.; 3000 mm, chassis width; 3400 mm, chain width approx.; 810 mm, weight approx. 30 to., incl. backhoe bucket Oscar Meier AG type ASM 100, pinion of the slewing gearbox and seals of the slewing union renewed, location; 01587 Riesa	1,600.00
25	1	4 floors panel press Ott GmbH, inventory number; 27948, Heatable, 4 floors hydraulic continuous press or veneer press, press board size 2700 x 1350 mm, press pressure designed for veneering and covering wood materials, approx. 0.6 N/mm ² , hydraulic cylinder piston Ø 170 mm, Feeding conveyor on the inlet side, outlet side with roller conveyor, foundation with pit required, dimensions approx.; L3800 x W2800 x H3750 mm, hydraulic pump; HAWE type R25.0, P 350 bar, control/switch cabinets with e.g. Siemens OP 393, Simatic S5, height-adjustable inlet and outlet conveyors, total weight approx. 38 tons, documentation available, e.g. circuit diagram, hydraulic diagram, installation diagram,, location; 01587 Riesa	1,500.00
26	1	3-roll bending machine Daeusler Herten, RMA 2500x25, year built; 1961, inventory number; B13214, with pneumatic release of the upper roller, rollers Ø 400 mm, max. Sheet width 2500 mm, max. Sheet thickness (mild steel) 25 mm, The upper roller is rigid when bending. The two lower rollers are adjusted via spindles. All two rollers can be adjusted individually. The machine can also be used to produce conical containers, machine weight approx. 27,000 kg, required floor space min. approx. 7000 x 2000 mm, height approx. 2600 mm, condition; in need of overhaul, location; 01587 Riesa	1,500.00
27	1	Washing drum for vegetables Unbekannt, inventory number; 26141, Drum screening machine made of stainless steel for peas or similar products, total dimensions; length approx. 3.500 mm height approx. 2.500 mm (with 400 mm platform) width 2.200 mm, dimensions drum; length approx. 3.000 mm Ø approx. 1.500 mm perforation sieve Ø 5 mm, drive infinitely variable gear motor, location; 01587 Riesa	1,400.00
28	1	Air conditioning / Air conditioning compressor RefComp Lonigo Vicenza Italien, SRC-S-133-L4H, year built; 2009, inventory number; B12227, Screw compressor, air-conditioning compressor Year of construction 2009, consisting of; 2 screw compressors, Manufacturer; RefComp, Type; SRC-S-133, Ser.-No.RE00093364 & RE00093366, 400 V; 277/398 A; 50 Hz; IP54, rated power 30 kW, flow volume 150 m ³ /h, pressure; 19-26,5 bar, 3x shell and tube condensers, manufacturer WTK, type; CF270 CA2P, 272 kW (46.80 m ³ /h); Ø 273 mm, Tube Side; 10-11 bar; -10/+120 °C; 26.0 dm ³ ; H2O, Shell Side; 30-33 bar; -10/+120 °C; 85.9 dm ³ ; Gas, with switch box / control box, main switch, control & switch modules & pcd7.D232 terminal display, with piping and further various attachments, all mounted on a stable 4-sided tube frame, total approx. 3450 x 1400 H 1900 mm, location; 01587 Riesa	1,200.00
29	1	Piston compressor / air conditioning compressor Polartech AG, KW-HGX5/830/FU-134-83/2, year built; 2007, inventory number; B12243, Refrigerant R134a, refrigerant quantity 2x 15 kg, cooling capacity 83.0 kW, total approx. 2000 x 1100 H 2200 mm, location; 01587 Riesa	950.00
30	1	Guide and feed spindle lathe TOS, SU-80A, inventory number; B10441, turning diameter over bed max. 700 mm, turning Ø over support max. 500 mm, centre distance max. 6.000 mm, tube feed-through approx. 70 mm, with guide ruler, lynette, face plate 800 mm, tailstock, total dimensions approx. 8600 x 1700 x 1600 mm, location; 01587 Riesa	900.00



Lot	Number Description	Starting Bid €
31	<p>1 calender</p> <p>Jakob Weiß und Söhne, PK WOB-800, year built; 2002, inventory number; B12680, for finishing, calibrating or compressing the surfaces of coated webs, e.g. in the textile or foil industry, manufacturer JWS "Jakob Weiß & Söhne", type PK WOB-800, machine-tool -No.; 098/475, year of construction 2002, condition as good as new, roll width; 800 mm, roll Ø approx. 400 mm, 2x servo motor Lenze MDSKARS112-22, 390 V; 13.5 A; 85 Hz; 24.6 Nm; 6.4 kW, switch/control cabinet with Siemens Simatic S7 & Lenze modules, hydraulic unit, manufacturer compressed air Götz, type UX-40S2X/PV10-14/R4-0.40-700/90L-1, power/pressure; 25 bar, hydraulic pump Rexroth PV7-17/10-14RE01MC0-16, motor; holder DPG90L4; 1,5 kW; 230/400 V; 50 Hz, directional spool valve Rexroth 4WE 6 D62, pressure reducing valve Rexroth ZDR 6 DP2-41, pressure limiting valve Rexroth ZDB 6 VP1-42, oil cooler, oil sump, tank approx. 350 x 450 x 250 mm / approx. 40 litres, size approx. 750 x 600 H 900 mm, total approx. 2600 x 1300 H 2400 mm, location; 01587 Riesa</p>	900.00
32	<p>1 4 column hydraulic press</p> <p>Henry Berry Co. LTD, 200, inventory number; B13225, pressing force 200 tons, table size approx. 1520 x 1680 mm with additional T-slot clamping plate approx. 1200 x 1200 mm, ram plate with additional T-slot clamping plate approx. 1200 x 1200 mm, max. piston stroke approx. 1400 mm, width between columns approx. 1500 mm, hydraulic tank approx. 1000 x 1000 x 1000 mm / approx. 400 litres, with power box, filter, hydraulic distributor and other small parts, hydraulic pump with electric motor, universal motor 380 V, 50 Hz, 18,5 kW, power box and motor renewed 2012, press size approx. 1700 x 2050 H 5700 mm (+ accessories), weight approx. 22-23 to, location; 01587 Riesa</p>	900.00
33	<p>1 eccentric screw pump</p> <p>Netzsch Pumpen GmbH, NM125SY02S12Z, year built; 2003, inventory number; B12283T, Pumped medium Fibre suspension, operating temperature 50 °C, solids content 6%, dynamic viscosity 5000 - 10000 mPas, flow rate approx. 50 m³/h, head 10 bar, suction head inlet, speed 155 rpm, flange; VA 1.4571, DN200/219, PN16, stator EPDM approx. 1400 mm, stator jacket steel, stator bolt galvanized steel, or 1.4301, rotor 1.4571, surface chrome carbide Hastelloy, pump length approx. 2740 mm, drive gear motor Nord 225S/4 TF, 400/690 V; 66,9/38,6 A; 50 Hz; IP55, power; 37 kW; 1480/155 rpm, total approx. 4710 x 600 x 700 mm, condition very good, location; 01587 Riesa</p>	800.00
34	<p>1 eccentric screw pump</p> <p>Netzsch Pumpen GmbH, NM105BY02S12B, year built; 2003, inventory number; B12284T, Eccentric screw poppy pump, manufacturer; Nemo Netzsch, type; NM105BY02S12B, year of construction 2003, pumped medium fibre suspension, operating temperature 60 - 75 °C, solids content 2 - 5 %, flow rate 8 - 60 m³/h, suction height inlet, speed approx. 30 - 242 rpm, flange; VA 1.4571, DN150/168.3 PN16, stator EP (EPDM) approx. 1150 mm, stator jacket steel, stator bolt galvanised steel or 1.4301, rotor 1.4571, drive gear motor Nord 200L/4 TF, 400/690 V; 54.0/31.2 A; 50 Hz; IP55, power; 30 kW; 1470/136 rpm, total approx. 3600 x 550 x 650 mm, location; 01587 Riesa</p>	800.00
35	<p>1 Containment System</p> <p>Hecht Anlagenbau, 7178710, year built; 2008, inventory number; B12522, with scale and discharge screw for industry, pharma, production, laboratory, manufacturer Hecht Anlagenbau, type; 7.178710, year of construction 2008, material stainless steel, test area area approx. 900 x 900 mm, front flap approx. 850 x 650 mm, service flap lateral approx. 700 x 580 mm, connection lateral approx. Ø 350 mm, outlet bottom approx. 500 mm, rear opening approx. Ø 100 mm, discharge screw with pneumatic valve, screw length approx. 1500 mm, screws Ø approx. 110 mm, screw drive Siemens Z48-KQ, 1.7 L oil; 3000/113 rpm, 4x load cells "Flintec SB5-5kN-C3" (510 kg), 1x scale indicator "sartorius Combics 2", total approx. 1600 x 2000 H 2050 mm, shipping weight approx. 485 kg, location; 01587 Riesa</p>	800.00



Lot	Number	Description	Starting Bid €
36	1	Containment System Hecht Anlagenbau, 7178407, year built; 2008, inventory number; B12524, with scale and discharge auger, manufacturer Hecht Anlagenbau, type; 7.178407, year of construction 2008, material; stainless steel, test area approx. 900 x 800 mm, front flap approx. 850 x 650 mm, service flap lateral approx. 650 x 550 mm, connection lateral approx. Ø 340 mm, outlet bottom approx. 500 mm, rear opening approx. Ø 100 mm, discharge screw with pneumatic valve, screw length approx. 1000 mm, screws Ø approx. 110 mm, screw drive Siemens Z48-KQ, 4x load cells "Flintec SB5-5kN-C3" (510 kg), 1x scale indicator "sartorius Combics 2", total approx. 1600 x 1600 H 2050 mm, shipping weight approx. 480 kg, location; 01587 Riesa	800.00
37	1	vertical milling machine Droop und Rein, FS 130, year built; 1965, inventory number; B11354, Travel x, y, z 1900x1020x1020 mm, table surface 2400 x 1000 mm, tool holder SK 50, spindle speeds 20-1000 rpm, spindle motor 26 kW, spindle diameter 130 mm, clamping table 1000x650 mm, footprint approx. 4,800 x 5,300 x 4,000 mm, weight approx. 23,000 kg, location; 01587 Riesa	750.00
38	1	Containment System Hecht Anlagenbau, 7178555, year built; 2008, inventory number; B12523, for industry, pharma, manufacturing, laboratory, manufacturer Hecht Anlagenbau, type; 7.178555, year of construction 2008, material stainless steel, test area area approx. 900 x 900 mm, front flap approx. 850 x 650 mm, service flap lateral approx. 700 x 580 mm, connection lateral approx. Ø 350 mm, outlet bottom approx. 150 mm, opening rear approx. Ø 100 mm, total approx. 1600 x 1300 H 2050 mm, shipping weight approx. 330 kg, location; 01587 Riesa	700.00
39	1	calender Jakob Weiß und Söhne, AW WOB-900, year built; 2004, inventory number; B12684, Universal pilot plant machine, roll coating roll coater, roll coater for coating, embossing, smoothing, varnishing and printing of webs e.g. in the textile or foil industry, manufacturer; JWS "Jakob Weiß & Söhne GmbH", type AW / WOB-900, year of construction 06/2004, condition as new, roller width; 900 mm, with servo motor Lenze MDSKARS056-22, 390 V; 0.8 kW, switch/control cabinet with Siemens Simatic S7 & Lenze modules, total approx. 2100 x 800 H 1900 mm (+ switch cabinet), location; 01587 Riesa	600.00
40	1	3 roll bending machine Unbekannt, inventory number; B10148, Round roll, fully functional, manufacturer/type unknown, length lower rolls; 2750 mm, diameter lower rolls; 300 mm, length upper roll; 2900 mm, Ø upper roll approx.; 280 mm, upper roll height-adjustable by turning spindle, suitable for sheet thicknesses up to approx. 12 mm, drive motor 380 V; 22 A; 50 Hz, 10 kW; 1440 rpm, total space requirement approx. 4300 x 2300 x 2000 mm, weight approx. 5,000 kg, location; 01587 Riesa	550.00
41	1	Transformer Medium voltage AEG, TSUC 6244 C, year built; 1988/2004, inventory number; B12138, rewound 2004, since then unused, rated power; 1600 kVA, rated voltage 20000-5000 V, rated current; 46,2-1848 A, rated voltage secondary 400V, rated current secondary 2309 A, frequency; 50Hz, oil weight; 0,844 to, total approx. 1900 x 1115 H 2250 mm, weight 4.480 kg, location; 01587 Riesa	550.00
42	1	Dosing system with hopper and scale Unbekannt, inventory number; B12264, hopper / pre-bunker with sampler, 2x filling opening Ø 200 mm, without lid approx. 700 x 1000 mm, hopper height approx. 900 mm, dosing screw length approx. 2200 mm, tube Ø approx. 220 mm, drive motor SEW-Eurodrive 3 kW, 1400/130 rpm, hopper scale with 3x 50 kg load cells, inlet Ø approx. 200 mm, hopper scale Ø approx. 600 mm, hopper scale height approx. 750 mm, outlet Ø approx. 200 mm, with inlet and outlet flap pneumatically controlled, switch/control cabinet with SEW Movitrac 31C030-503-4-00 frequency converter, Siemens Simatic S7 control, Siemens 4AV2200-2AB power supply, total approx. 3700 x 1700 H 2000 mm, stainless steel, location; 01587 Riesa	550.00



Lot	Number	Description	Starting Bid €
43	1	guillotine shears Wieger, SW 5/40, year built; 1965, inventory number; B12703, machine no. 401598, cutting length 4000 mm, sheet thickness up to 5 mm, table size approx. 4235 x 500 mm, table height approx. 950 mm, total approx. 5040 x 2200 H 2350 mm, location; 01587 Riesa	550.00
44	1	metal detector Mesutronic, MN 5.0, inventory number; B13249, for installation in conveyor belts, vibratory conveyors and material slides, manufacturer Mesutronic, type MN 5.0 1400/1400, no.; 940815, outlet opening approx. 1700 x 1420 mm, with removable base plate, total W/D/H approx. 1900 x 1200 H 1700 mm, location; 01587 Riesa	550.00
45	1	press brake Lotze, P60-30, year built; 1966, inventory number; B10613, Press brake, machine no. 4608, working width max. 3,000 mm, pressing force max. 60 t, stopping time 100 ms, safety distance 165 mm, two-hand / foot operation, tool holder length; 3000 mm, table size; 3000 x 220 mm, tools; prism and sword, size approx. L/W/H; 3200 x 1650 x 2100 mm, location; 01587 Riesa	450.00
46	1	sewage pump Sulzer Weise, ZVO XII-402, year built; 1994, inventory number; B12142, for waste water with solids content, pumping capacity 312 m³/h, pressure 2.39 mWS, revolution= 560 rpm, temperature= 20 °C, density= 1000 kg/m³, P= 3 kW, NPSH= 1 m, DN240 / flange approx. 390 mm, drive motor Siemens 1LA6 253-4AA61Z, 400/690 V; 97/56 A; 50 Hz, power; 55 kW; 1475 rpm, total approx. 950 x 1100 H 2400 mm, weight approx. 1264 kg, location; 01587 Riesa	450.00
47	1	sewage pump Sulzer Weise, ZVO XII-402, year built; 1994, inventory number; B12142, for waste water with solids content, pumping capacity 312 m³/h, pressure 2.39 mWS, revolution= 560 rpm, temperature= 20 °C, density= 1000 kg/m³, P= 3 kW, NPSH= 1 m, DN240 / flange approx. 390 mm, drive motor Siemens 1LA6 253-4AA61Z, 400/690 V; 97/56 A; 50 Hz, power; 55 kW; 1475 rpm, total approx. 950 x 1100 H 2400 mm, weight approx. 1264 kg, location; 01587 Riesa	450.00
48	1	sewage pump Sulzer Weise, ZVO XII-402, year built; 1994, inventory number; B12142, for waste water with solids content, pumping capacity 312 m³/h, pressure 2.39 mWS, revolution= 560 rpm, temperature= 20 °C, density= 1000 kg/m³, P= 3 kW, NPSH= 1 m, DN240 / flange approx. 390 mm, drive motor Siemens 1LA6 253-4AA61Z, 400/690 V; 97/56 A; 50 Hz, power; 55 kW; 1475 rpm, total approx. 950 x 1100 H 2400 mm, weight approx. 1264 kg, location; 01587 Riesa	450.00
49	1	centrifugal pump KSB AG, Etanorm-G 150-400 G10, year built; 1998, inventory number; B12327, Pump capacity 450 m³/h, H= 40 m, drive motor VEM motors K11R 280 S4, power 75 kW; 1480 rpm, size approx. 1600 x 700 H 900 mm, weight approx. 900 kg, location; 01587 Riesa	450.00
50	1	centrifugal pump KSB AG, Etanorm-G 150-400 G10, year built; 1998, inventory number; B12328, Pump capacity 450 m³/h, H= 40 m, drive motor VEM motors K11R 280 S4, power 75 kW; 1480 rpm, size approx. 1600 x 700 H 900 mm, weight approx. 900 kg, location; 01587 Riesa	450.00
51	1	rotary filters Seitz GmbH, Combibloc, year built; 1978, inventory number; B12640, drum-Ø approx. 880 mm, drum length approx. 2100 mm, filter surface approx. 6,0 m², pump 7,5 PS / 5,5 kW, pump Seitz-Werke SA-2, year of construction 1978, vacuum tank, scraper, switch cabinet, material stainless steel, condition; must be overhauled, total approx. 3800 x 1750 H 1500 mm, location; 01587 Riesa	450.00



Lot	Number	Description	Starting Bid €
52	1	vortex centrifuge Bonfiglio SRL, Vortice 50F-SL, year built; 2014, inventory number; B13004, Batch centrifuge with manual loading and unloading, condition unused, power consumption 6.95 kW / 400 V, drum volume 50 litres, switch cabinet with Siemens S7 control (circuit diagram available), size approx. 1200 x 1200 H 1650 mm + switch cabinet 800 x 600 x 260 mm, location; 01587 Riesa	450.00
53	1	Three-phase cast resin dry transformer SGB, DTTHG 3150/20, year built; 2009, inventory number; B13250, F.-Nr.; 255567, rated power 3000 / 2057 / 1479 kVA, size approx. 2350 x 1550 H 2100 mm, weight approx. 6600 kg + fairing approx. 430 kg, location; 01587 Riesa	450.00
54	1	Three-phase cast resin dry transformer SGB, DTTHG 3150/20, year built; 2009, inventory number; B13251, F.-Nr.; 255566, rated power 3000 / 2057 / 1479 kVA, size approx. 2350 x 1550 H 2100 mm, weight approx. 6600 kg + fairing approx. 430 kg, location; 01587 Riesa	450.00
55	1	Dump truck for SZM Wabco-Ackermann, DA78F3, year built; 1994, inventory number; B13280, with aluminium body, semi-trailer, Wabco/Ackermann DA78F3, No. FA348301, max. total load 34000 kg, unladen weight 10000 kg, payload 24000 kg, without papers, without TÜV, length approx. 9.40 m, width approx. 2.50 m, height approx. 2.95 m, location; 01587 Riesa	450.00
56	1	Stainless steel rotary valve Kreisel GmbH & Co KG, ADG 320/600, year built; 2006, inventory number; 27245, ManufacturerNo. 55059-2, With remote bearing, stuffing boxes and attached speed monitoring, 2 cleaning openings on the side, Detailed documentation/operating instructions available, Material housing & cell wheel X6 Cr Ni Ti 18 10 (1.4541), Cell wheel Ø; 320 mm, Inlet/outlet opening; 600 x 300 mm, Chamber depth; approx. 80 mm, chamber opening; approx. 100 mm, number of chambers; 8, installation height; 450 mm, max. 90 °C, drive motor helical geared motor SEW Eurodrive, type; RF 77 DT 80 N4 / TF, 230/400 V IP55 0.75 kW 1,380 / 8.3 rpm, total dimensions; approx. 1,700 x 420 x 450 mm, location; 01587 Riesa	400.00
57	1	Stainless steel rotary valve Kreisel GmbH & Co KG, ADG 320xx600, year built; 2004, inventory number; B11892, ManufacturerNo. 41577, With stepped bearing, stuffing boxes and speed monitoring, material housing & cell wheel; X6 Cr Ni Ti 18 10 (1.4541), cell wheel Ø; 320 mm, inlet/outlet opening; 600 x 300 mm, chamber depth; approx. 80 mm, chamber opening; approx. 100 mm, number of chambers; 8, installation height; 450 mm, max. 90 °C, effective conveying capacity max. 24 m³/h, theoretical conveying capacity 32 m³/h, (100% filling degree at 17 rpm), rotor volume 32 dm³, filling degree 75 %, drive motor helical geared motor SEW Eurodrive, type; RF 77 DT 80N-2, 230/400 V 4.70/2.70 A 1.1 kW 2800/17 rpm, total dimensions; approx. 1,750 x 450 x 450 mm, weight 333 kg, location; 01587 Riesa	400.00
58	1	head lathe Heid, inventory number; B12802, Facing lathe, turning length max. approx. 1250 mm, 4-jaw face plate Ø 1000 mm, turning diameter max. approx. 1015 mm, with leading and traction spindle, electrics must be renewed, total approx. 3700 x 1900 H 1750 mm, location; 01587 Riesa	400.00
59	1	Discharge and dosing rotary valve Waeschle, ZKD 480, year built; 2003, inventory number; B11893kt, for powder, manufacturer Waeschle Coperion, type; ZKD-480.1-55-AC, AC= cast housing aluminium hardcoated, cell wheel stainless steel, year of construction 2003, permissible temperature; 60 °C, permissible pressure; 1,50 bar, installation height 700 mm, inlet/outlet opening approx. 460 x 300 mm, flange size approx. 580 x 420 mm, cell wheel Ø approx. 480 mm, cell width approx. 500 mm, cell depth approx. 100 mm, cell opening approx. 140 mm, number of cells approx. 10-12, drive gear motor SEW-Eurodrive R87-DV100M4, 230/400 V; 8.20/4.70 A; 50 Hz, power; 2.2 kW; 1410/23 rpm, total approx. 1550 x 650 H 700 mm, weight approx. 505 kg, location; 01587 Riesa	380.00



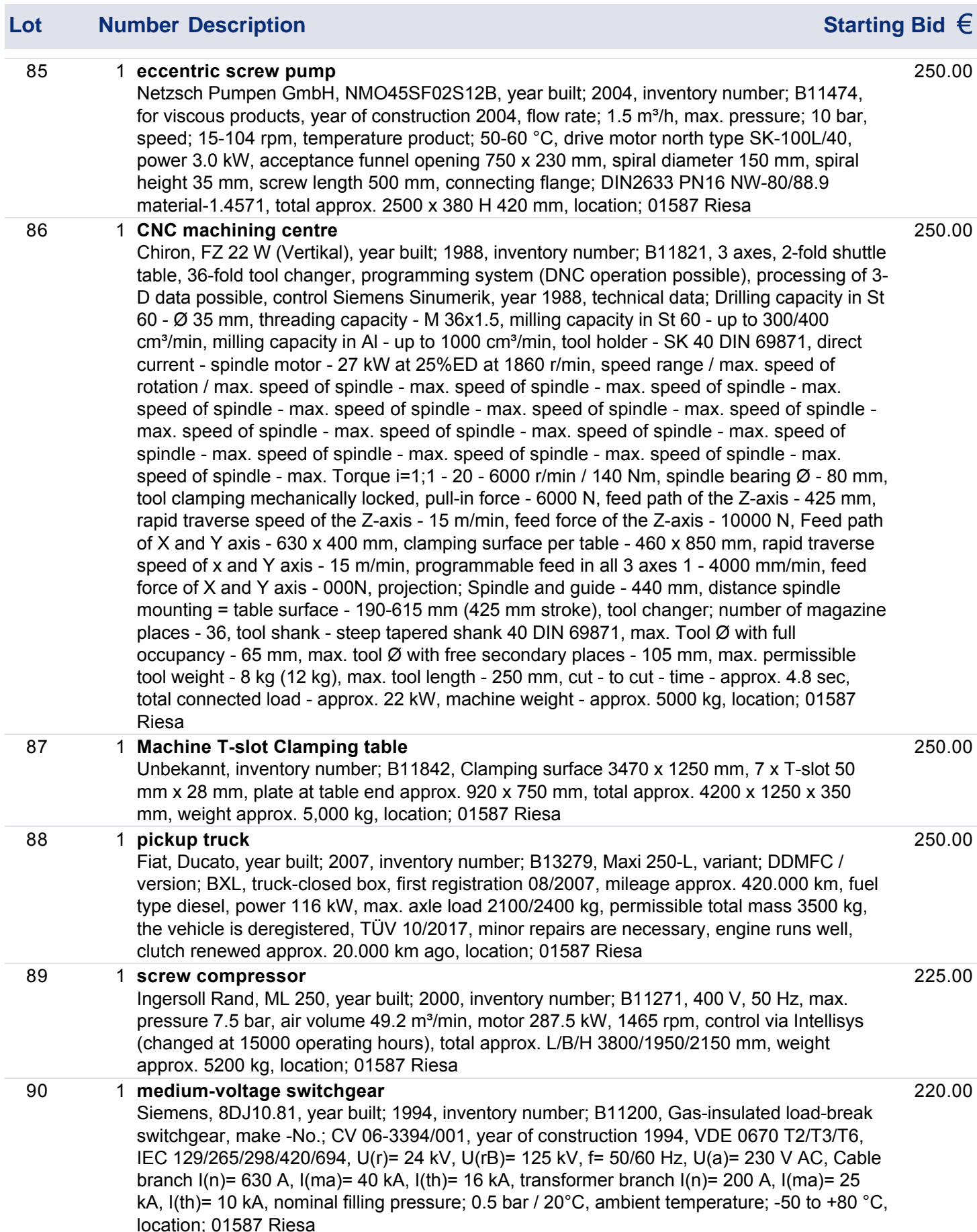
Lot	Number	Description	Starting Bid €
60	1	press brake Mengele, A80-25L, year built; 1962, inventory number; B12764, Operating hours 5447 h, pressing pressure 80 to, stroke 160 mm, adjustability of upper beam 125 mm, maximum distance between table and upper beam 540 mm, column projection 250 mm, column passage 2550 mm, stopping distance 5 mm, stopping time 0.085 s, safety distance 144 mm, table length approx. 3450 mm, tool length approx. 3100 mm, supports for machine available, total approx. 3800 x 1800 H 3400 mm, location; 01587 Riesa	380.00
61	1	head lathe Heyligenstaedt, 650ES, year built; 1958, inventory number; B12805, max. turning length approx. 1250 mm, max. turning diameter approx. 1300 mm, centre height 650 mm, 4-jaw face plate Ø 1200 mm, removable bed approx. 400 mm, revolutions 5, 7, 10, 14, 20, 28, 40, 56, 79, 112, 160, 224 rpm, guide and feed spindle, motor Perske DN2312/4 380 V; 15 kW; 1450 rpm, ! Electrical system must be replaced, total approx. 3700 x 1900 H 1750 mm, location; 01587 Riesa	360.00
62	1	Stainless steel rotary valve Kreisel GmbH & Co KG, ADG 300/600, year built; 1998, inventory number; 26325, Outlet/inlet; 600 x 300 mm, rotor/cell wheel Ø; approx. 300 mm, chambers; 8, chamber depth; 90 mm, chamber width; 115 mm, chamber length; 590 mm, = 3.5 litres per bag = 28 litres, incl. drive gear motor (with brake); SEW Eurodrive type. KF57 R37 DT63L Power 0.25 kW Speed 4.1 rpm Voltage 380 V, location; 01587 Riesa	350.00
63	1	ball mill Kefama, K/TM N-17, year built; 1959, inventory number; B10562, Drum length approx. 1900 mm, drum Ø approx. 1750 mm, drive gear Ø approx. 1950 mm x 100 mm, opening approx. 470x500 mm, with gear and electric motor (VEM 380 V; 7.5 kW), location; 01587 Riesa	350.00
64	1	press brake Lotze, P60-30, year built; 1965, inventory number; B10611, Machine No. 4607, working width max. 3,000 mm, pressure force max. 60 t, two-handed/foot-operated, without tools, without backgauge, location; 01587 Riesa	350.00
65	1	press brake Lotze, PW-80, year built; 1970, inventory number; B10612, Machine No. 5410, working width max. 2,500 mm, pressure max. 80 t, from Operating hours 5,273 h, two-handed/foot-operated, without tools, dimensions L 3.00m, B 1.40m, H 2.55m, location; 01587 Riesa	350.00
66	1	Machine T-slot Clamping table Unbekannt, inventory number; B11836, 2 parts, total clamping area approx. 7360 x 1250 mm, total size approx. 9770 x 1250 x 350 mm, 7 x T-slot 50 mm x 28 mm, total approx. 4200 x 1250 x 350 mm, weight approx. 10,000 kg, location; 01587 Riesa	350.00
67	1	Vertical CNC machining center Osaka Kiko Co. Japan, PCV 50, inventory number; B12181, MachineSerial No.; 587, Manufacturer No. MA42487, x-way; 720 mm, y-way; 520 mm, z-way; 520 mm, Clamping table approx. 920 x 660 mm, max. Workpiece weight; 500 kg, spindle mounting ISO BT-40, milling spindle speed; 100-6000 rpm, feed rate 1-5000 mm/min, rapid traverse x,y; 16000 mm/min, rapid traverse z; 12 m/min, control; CNC Fanuc Series O-M, 30-fold tool changer, tool change time approx. 2.5 sec, Machine size approx. 2.36 x 3.0 H 3.15 m, machine weight approx. 5635 kg, chip conveyor discharge height approx. 1.15 m, size approx. 3.7 x 0.9 H 1.65 m, chip conveyor weight approx. 445 kg., location; 01587 Riesa	350.00
68	1	Fruit juice mixing plant Füllpack GmbH, Füllmix MB, year built; 1995, inventory number; B12407, Fruit juice mixing plant, computer-controlled, Manufacturer; Füllpack GmbH (Gea-Group), Model; Fuellmix-MB, Füllpack Mixer 1 / Mixing plant 1, Capacity approx. 7000 - 15000 l/h, including flow meter Fischer-Porter, valves, pumps, flow meter E + H, switch cabinet, documentation available, Dimensions 2100 x 2500 x 2100 mm, location; 01587 Riesa	350.00



Lot	Number	Description	Starting Bid €
69	1	Fruit juice mixing plant Füllpack GmbH, Füllmix MB, year built; 1995, inventory number; B12409, Computer-controlled, Manufacturer; Füllpack GmbH (Gea-Group), Model Füllmix-MB, Year of construction 1995, Füllpack Mixer 2 / Mixing plant 2, Capacity approx. 7000 - 15000 l/h, including flow meter Fischer-Porter, valves, pumps, control cabinet, documentation, dimensions 2800 x 2100 x 2100 mm, location; 01587 Riesa	350.00
70	1	Pneumatic valve block HOVAP, Varioflow 8122, inventory number; B12571, incl. control cabinet Siemens, 20x air operated process valves, manufacturer; HOVAP, type; Varioflow 8122, NW-50, pressure min. 500 kPa / max. 1000 kPa, with 20x IFM IG5401 efektor inductive sensor, 9x valves from HERRLI (orange cap), pipe-Ø DN50, shipping size approx. 2400 x 1100 H 1500 mm, size approx. 2200 x 450 x 2150 mm, location; 01587 Riesa	350.00
71	1	ball mill Unbekannt, inventory number; B12636, Drum Ø approx. 1000 mm, drum width approx. 950 mm, volume approx. 700 litres, inlet/outlet opening approx. 400 x 400 mm, round filling opening approx. Ø 200 mm, drive via 4 V-belts, total approx. 2200 x 1000 H 1600 mm,, location; 01587 Riesa	350.00
72	1	Shredder or shredder Sterifant, SH 96/1, year built; 1996, inventory number; B12695, Voltage 380/400 V; 50 Hz, power 6.4 kW, hopper with tilting device for container approx. Ø 350 x 500 mm, opening approx. Ø 410 mm, working width approx. 440 mm, hydraulic power unit press / compressor, switch / control cabinet, Eurotherm Drives 584S frequency converter, Siemens Simatic S7-200 control + 2x EM222 extension modules, total approx. 1500 x 750 H 1550 mm, location; 01587 Riesa	350.00
73	1	swivel bending machine Fasti, AKM Größe 5, year built; 1965, inventory number; B12763, Usable length 2040 mm, iron sheets up to 3 mm, stroke of upper beam 200 mm, adjustability of bending beam and lower beam approx. 100 mm, documentation for machine available, size approx. 3200 x 1200 H 1550 mm, weight approx. 3500 kg, location; 01587 Riesa	350.00
74	1	Aroma or flavour drum Franz Sagemüller, AK 950, year built; 2006, inventory number; B12987, for tobacco, herbs or tea, drum Ø approx. 950 mm, drum length approx. 2000 mm, drum drive SEW-Eurodrive; 2.2 kW; 97 rpm, inlet opening approx. 500 x 200 mm, outlet opening approx. 500 x 500 mm, 2 injection nozzles in the drum chamber, product guiding parts stainless steel, total approx. 3500 x 1600 H 2200 mm, location; 01587 Riesa	350.00
75	1	semi-trailers Broshius, 2AO-12-20V, year built; 1988, inventory number; B13252, Initial approval 03/1988, axle load max. 20000 kg, length 12300 mm, width 2500 mm, permissible total mass 30500 kg, TÜV 06.2018 expired;, location; 01587 Riesa	350.00
76	1	head lathe Unbekannt, inventory number; B12804, Turning length max. approx. 1000 mm, 4-jaw face plate Ø 1300 mm, turning diameter max. approx. 1100 mm, centre height approx. 550 mm, with feed spindle, connection for hydraulic adjustment for vice, Demag motor 27/13 M8-4 380 V, 2.8/5.1 kW, ! Electrics must be renewed ! Total approx. 2700 x 1900 H 1750/2250 mm, location; 01587 Riesa	340.00
77	1	toggle press Werkzeug- und Maschinenfabrik Burger & Söhne, DO5, year built; 2005, inventory number; 23258, pressing force max. 6 t, stroke max. 39 mm, turntable manufacturer Elan switching elements, type SEP, table Ø 290 mm, machine weight approx. 250 kg, location; 01587 Riesa	330.00



Lot	Number Description	Starting Bid €
78	1 Aluminium crucible furnace Nbenes a Lat, year built; 1994, inventory number; B11408, hydraulic tilting, volume 585 kg, output 900 kW, pressure 2,3 kPa, melting capacity approx. 450 kg/h, burner Elco-Klöckner, type; EK05.100L-Z "DE", output; 470-1110 kW, fuel type oil, oil throughput; 39-93 kg/h, voltage; 230/400 V; 50 Hz, total size approx. 1700 x 2800 x 1800 mm, location; 01587 Riesa	320.00
79	1 Discharge and dosing rotary valve Waeschle, ZKD 550, year built; 2008, inventory number; B11894kt, explosion-proof, GC= cast iron housing, cast iron, chrome-plated bore, mild steel cellular wheel, Ex II1D/2GDcT5/90°C; FTZU 05 ATEX 0004X; FTZU 06 ATEX 0039, year of construction 2008, permissible operating temperature; 60 °C, permissible operating pressure; 1.50 bar, installation height; 800 mm, inlet / outlet opening approx. 500 x 320 mm, flange size approx. 640 x 460 mm, cell wheel Ø approx. 550 mm, cell width approx. 550 mm, cell depth approx. 170 mm, cell opening approx. 150 mm, number of cells approx. 10, shaft approx. Ø 60 mm, L 100 mm, total approx. 1600 x 700 H 800 mm, weight approx. 910 kg, location; 01587 Riesa	300.00
80	1 Explosion-proof dust filter WAIWELDAI, VX-34108, year built; 2006, inventory number; B12473, Industrial cartridge filter, air volume 2500 m³/h, article no. 160172, year of construction 2006, clean gas side Ex II 3D c T4 -10°C to +40°C, raw gas side Ex suitable for zone 20 -10°C to +40°C, operating pressure 6bar , +/- 50 mbar, with integrated fan f.lli ferrari VCN451N5NRD112 with Siemens motor, Ex II 3 D11950 max. 60°C, V 0.69 m³/s 2484 m³/h, p 5500 Pa, density 1.2 kg/m³, n 3000 rpm, with Waiweldai WFC filter control, inlet/outlet opening approx. 200 mm, collecting container approx. 370 x Ø 400 , housing Ø approx. 850 mm, housing height approx. 2500 mm, total height approx. 3510 mm, total Ø approx. 1000 mm, weight approx. 270 kg, location; 01587 Riesa	300.00
81	1 steam boilers Geb. Weißbach, 6075, year built; 1993, inventory number; B13115, permissible steam generation 1.7 t / h, permissible flow temperature 165 °C, permissible heat output 1.1 MW, water capacity 3795 l, burner Weißhaupt, type G7/2 - D, output 300 - 1750 kW, location; 01587 Riesa	275.00
82	1 Aluminium crucible furnace Hindenlang, KLVE-300, year built; 1990, inventory number; B11407, hydraulic tilting, volume approx. 330 kg, output 395 kW, max. temperature 900 °C, voltage 400 V, 50 Hz, burner type BGE 3.1-30D, output 105-520 kW, fuel type natural gas, fuel flow pressure; 20 mbar, total size approx. 1700 x 2800 x 1800 mm, no type plate, data taken from an identical melting furnace, location; 01587 Riesa	270.00
83	1 2 bowl grab buckets with electric motor Feld - Demag, DH-2, year built; 1999, inventory number; B10997, K-2,21 - N-1600M, year of construction 1999, no.; 94500349, capacity; 1,44 t, net weight; 2,2 t, shell capacity; 1,6 m³, grab width; C=1940;D=2360 mm, bucket width approx. 1670 mm, power; 15 kW, voltage; 380/400 V; 50 Hz, pressure; 220 bar, total approx. W/D/H 1700 x 2200 x 1700 mm, location; 01587 Riesa	250.00
84	1 eccentric screw pump Netzsch, NMO45SF02S12B, year built; 2004, inventory number; B11474, for viscous products, flow rate; 1.5 m³/h, max. pressure; 10 bar, speed; 15-104 rpm, temperature product; 50-60 °C, drive motor Nord type SK-100L/40, power 3.0 kW, acceptance hopper opening 750 x 230 mm, spiral diameter 150 mm, spiral height 35 mm, press screw length 500 mm, connection flange; DIN2633 PN16 NW-80/88.9 Material-1.4571, total approx. 2500 x 380 H 420 mm, location; 01587 Riesa	250.00





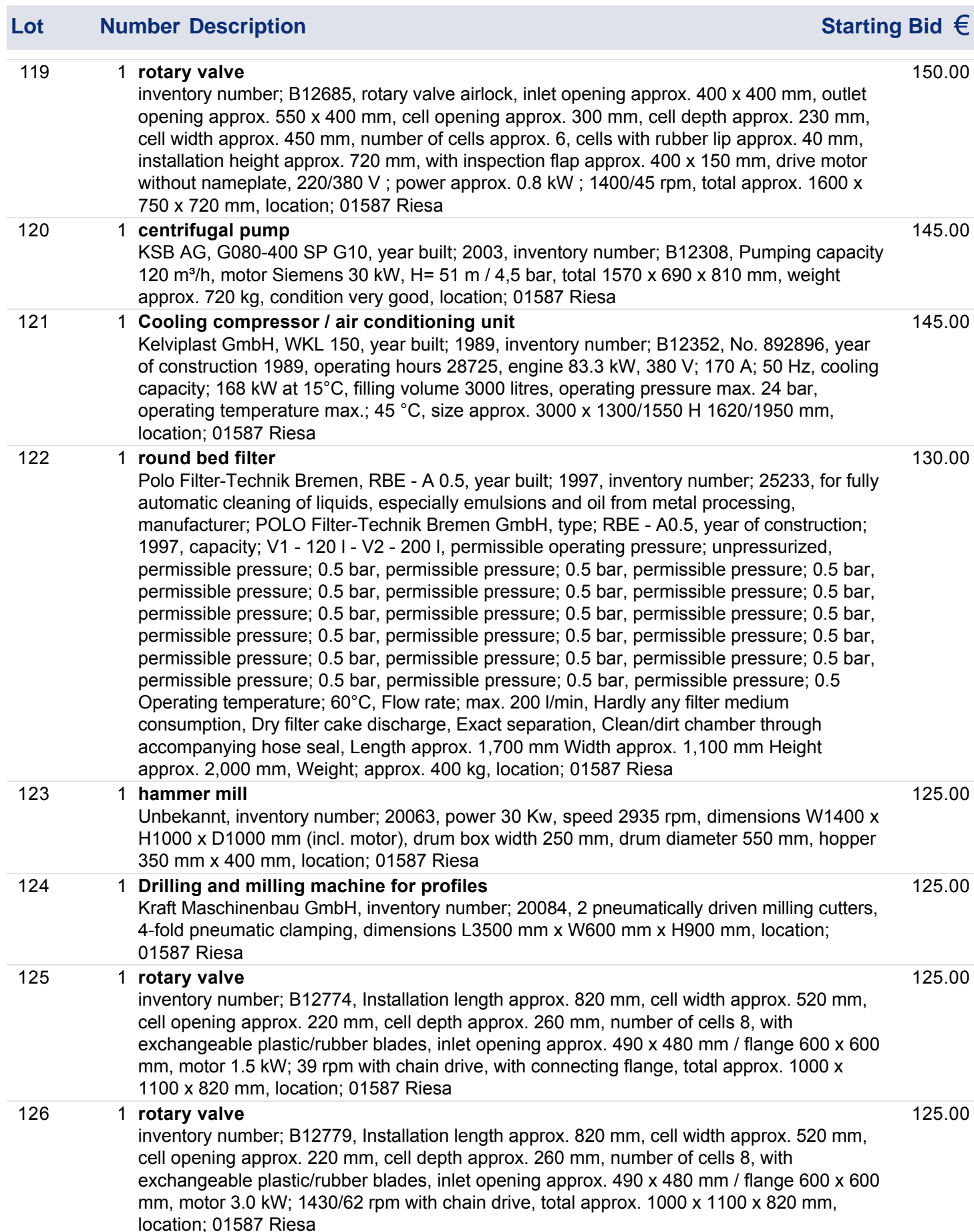
Lot	Number	Description	Starting Bid €
91	1	medium-voltage switchgear Areva, FBX-E, year built; 2004, inventory number; B12617, Gas-insulated medium-voltage switchgear, IEC 62271-200/2003, rated voltage 12 kV, short-circuit current 20 kA (1 s), feeder with switch-disconnector-fuse combination T1, size approx. 1000 x 800 H 1400 mm, location; 01587 Riesa	210.00
92	1	metal detector Boekels, Eqa 65x30, year built; 1994, inventory number; B10900, with search coil for detecting metallic foreign bodies in all non-conductive materials. search width; 650 mm, passage width; 950 mm, passage height; 300 mm, passage length; 580 mm, electronic evaluation device, manufacturer; BOEKELS, type; EMS 211 A, year of construction 1994, total approx. 1150 x 750 H 615 mm, weight approx. 160 kg, location; 01587 Riesa	200.00
93	1	Workshop paternoster Unbekannt, inventory number; B11805, 15 compartments, compartment size 1600 x 330 mm, 380 V geared motor, laterally driven via chain, function tested, total approx. 1950 x 900/1300 H 3000 mm, location; 01587 Riesa	200.00
94	1	Hydraulic paper baling press Tölz GmbH, HP-8, inventory number; B12180, for pressing paper, cardboard, foils, plastic, aluminium and metal containers, pressing pressure; 8 Mp, motor; 400 V; 3 kW, pressing time approx. 35 s, filling opening; 600 x 700 mm, bale size; 700 x 600 x 500-900 mm, bale weight; up to 120 kg, total size approx. 3000 x 800 H 850 mm, location; 01587 Riesa	200.00
95	1	sliding headstock lathe WMW, DLZ630III, year built; 1963, inventory number; B12817, L+Z lathe, max. turning length 5000 mm, centre height above bed 285 mm, Ø above bed 630 mm, Ø in the recess 710 mm, Ø above bed slide with short cross slide 380 mm, Ø above bed slide with long cross slide 320 mm, 3-jaw chuck Ø 400 mm mounted, 630 mm face plate, 315 mm jaw chuck, 1 steady rest, tailstock, total approx. 7300 x 1700 H 1500 mm + accessories, location; 01587 Riesa	200.00
96	1	centrifuge ARYMA Rimann AG, 25 LTR, year built; 2002, inventory number; B13002, Basket diameter 410 mm, Basket height 410 mm, Drum volume 25 litres, Charge max. 30 kg, Motor power 1.1 kW, Speed 1000 rpm, Mains voltage 400 V; 50 Hz, Control voltage; 230 V; 50 Hz, Max. speed 50 rpm, Max. speed 50 rpm, Max. speed 50 rpm, Max. speed 50 rpm, Max. speed 50 rpm, Max. speed 50 rpm, Max. speed 50 rpm, Max. control voltage; 230 rpm, Max. speed 1000 rpm, Max. mains voltage 400 V; 50 Hz, Max. control voltage; 230 rpm, Max. mains voltage 400 V; Max. control voltage; 230 rpm, Max. mains voltage; 1000 rpm, Max mains voltage; 1000 rpm, Max mains voltage; 1000 rpm. Back-up fuse 15 A, total approx. 900 x 900 H 1100 mm, location; 01587 Riesa	200.00
97	1	sliding table saw Altendorf, F45, year built; 1979, inventory number; B12271, with scoring saw, fully functional, sliding table 2500 mm, saw blade Ø 300 mm, cutting height max. 95 mm, saw blade can be tilted up to 45°, location; 01587 Riesa	180.00
98	1	Shunt motor 164 kW Siemens, 1GF1 274, inventory number; B11979, voltage 92-500 V, current 378-293 A, speed 50-1140 rpm, power 12,6-164, version B3, with Georgii Kobold DC speed sensor, type; KPG 506,20, 200 V at 2000 rpm, weight according to nameplate; 1,79 tons, location; 01587 Riesa	175.00
99	1	Shunt motor 164 kW Siemens, 1GF1 274, inventory number; B11980, voltage 92-500 V, current 378-293 A, speed 50-1140 rpm, power 12,6-164, version B3, with Georgii Kobold DC speed sensor, type; KPG 506,20, 200 V at 2000 rpm, weight according to nameplate; 1,79 tons, location; 01587 Riesa	175.00



Lot	Number Description	Starting Bid €
100	1 Portal vacuum lifter Bargstedt Maschinen- und Anlagenbau, Portalabstapelung, year built; 1983, inventory number; B12184, Running rail length approx.; 2900 mm, travel length approx.; 2000 mm, 4 suction plates Ø 250 mm, columns Ø approx.; 300 mm, column height approx.; 1000 mm, total approx. 3600 x 1600 H 2400 mm, side channel compressor Rietschle SKG 334-2.02, 400 V; 11,20 A; 50 Hz; 5,50 kW; +220 -220 mbar; max. 475 m³/h, drive motors; SEW Eurodrive 220/380 V; 1.0/0.58 A; 50 Hz; 0.18 kW; 1400/10 rpm, Mannesmann Demag KBF 80 A 8/2; 380 V; 0.13/0.55 kW; 630/2710 rpm, Mannesmann Demag KBA 90 B 12/4; 380 V; 0.16/1.05 kW; 385/1330 rpm, location; 01587 Riesa	175.00
101	1 Air conditioner / Air heater Weger Klimageräte, ZL 209, year built; 2010, inventory number; B12224, No.; 10-6-226, air capacity; 2x 6500 m³/h, fan speed; 1113 rpm, motor; 2x 1.5 kW, current consumption; 3.49 A, rated voltage (V); 400-3-50, main components; Heat exchanger, fan, air filter and housing construction, duct temperature sensor Siemens QAM2120.040, throttle valve drive Belimo SM230A 20Nm, base frame for housing (height approx. 250 mm), total approx. 2100 x 910 H 2100 mm, location; 01587 Riesa	175.00
102	1 Air conditioner / Air heater Weger Klimageräte, ZL 209, year built; 2008, inventory number; B12225, No.; 07-6-086, air capacity; 2x 6100 m³/h, fan speed; 1074 rpm, motor 2x 1.5 kW, current consumption 3.4 A, rated voltage (V); 400-3-50, main components; Heat exchanger, fan, air filter and housing construction, duct temperature sensor Siemens QAM2120.040, with throttle valve drive Belimo SM230A 20Nm, underframe for housing construction (H approx. 250 mm), total approx. 2100 x 910 H 2100 mm, location; 01587 Riesa	175.00
103	1 Air conditioner / Air heater Weger Klimageräte, ZL 209, year built; 2010, inventory number; B12226, No.; 10-6-226, air capacity; 2x 6500 m³/h, fan speed; 1113 rpm, motor; 2x 1.5 kW, current consumption; 3.49 A, rated voltage (V); 400-3-50, main components; Heat exchanger, fan, air filter and housing construction, duct temperature sensor Siemens QAM2120.040, throttle valve drive Belimo SM230A 20Nm, base frame for housing (height approx. 250 mm), total approx. 2100 x 910 H 2100 mm, location; 01587 Riesa	175.00
104	1 centrifugal pump KSB AG, G125-400 SP G10, year built; 2003, inventory number; B12300, Conveying capacity 255 m³/h, motor Siemens 45 kW, H= 51 m / 4,5 bar, total 1650 x 750 x 900 mm, weight approx. 900 kg, very good condition, location; 01587 Riesa	175.00
105	1 centrifugal pump KSB AG, G125-400 SP G10, year built; 2003, inventory number; B12303, Conveying capacity 255 m³/h, motor Siemens 45 kW, H= 51 m / 4,5 bar, total 1650 x 750 x 900 mm, weight approx. 900 kg, very good condition, location; 01587 Riesa	175.00
106	1 centrifugal pump KSB AG, G125-400 SP G10, year built; 2003, inventory number; B12302, Conveying capacity 255 m³/h, motor Siemens 45 kW, H= 51 m / 4,5 bar, total 1650 x 750 x 900 mm, weight approx. 900 kg, very good condition, location; 01587 Riesa	175.00
107	1 Cooling compressor / air conditioning unit Kelviplast GmbH, WKL 50 R, year built; 1982, inventory number; B12351, No. 821421, year of construction 1982, motor 31 kW, 380 V; 65 A; 50 Hz, cooling capacity; 58 kW at 18°C, filling volume; 400 litres, operating pressure max. 25 bar, exchanger surface approx. 2x 1050 x 760 mm, size approx. 2600 x 1300 H 2100 mm, location; 01587 Riesa	175.00
108	1 deep groove ball bearing Deutsche Kugellager Fabrik Leipzig, DKF 6309, year built; 1990, inventory number; B12408, 1,250 ball bearings (net weight 1000 kg), industrial quality, Made in Germany, original packaging, unused stock, no rust, type; DKF 6309, 5 ball bearings each in original carton, weight per package 4.0 kg, location; 01587 Riesa	175.00



Lot	Number	Description	Starting Bid €
109	1	deep groove ball bearing Deutsche Kugellager Fabrik Leipzig, DKF 6309, year built; 1990, inventory number; B12408, 1,250 ball bearings (net weight 1000 kg), industrial quality, Made in Germany, original packaging, unused stock, no rust, type; DKF 6309, 5 ball bearings each in original carton, weight per package 4.0 kg, location; 01587 Riesa	175.00
110	1	deep groove ball bearing Deutsche Kugellager Fabrik Leipzig, DKF 6309, year built; 1990, inventory number; B12408, 1,250 ball bearings (net weight 1000 kg), industrial quality, Made in Germany, original packaging, unused stock, no rust, type; DKF 6309, 5 ball bearings each in original carton, weight per package 4.0 kg, location; 01587 Riesa	175.00
111	1	deep groove ball bearing Deutsche Kugellager Fabrik Leipzig, DKF 6309, year built; 1990, inventory number; B12408, 1,250 ball bearings (net weight 1000 kg), industrial quality, Made in Germany, original packaging, unused stock, no rust, type; DKF 6309, 5 ball bearings each in original carton, weight per package 4.0 kg, location; 01587 Riesa	175.00
112	1	deep groove ball bearing Deutsche Kugellager Fabrik Leipzig, DKF 6309, year built; 1990, inventory number; B12408, 1,250 ball bearings (net weight 1000 kg), industrial quality, Made in Germany, original packaging, unused stock, no rust, type; DKF 6309, 5 ball bearings each in original carton, weight per package 4.0 kg, location; 01587 Riesa	175.00
113	1	emergency generator VEB Fimag, 6 VD, year built; 1977, inventory number; B12645, 6-cylinder diesel engine, type; 6 VD 14,5/12-1 SRW (6VD14,5/12-1SRW), year of construction 1977, PS 104 / 76,5 kW, capacity 9840 cm ³ , rpm 1500, generator VEB Fimag, type; DGKIO 75-4/K, power 75 kVA, current 11 A, voltage 380 V, frequency 50 Hz, size approx. 2700 x 900 H 1600 mm, total weight approx. 1500 kg, location; 01587 Riesa	170.00
114	1	double mitre saw Elu, DG 102, year built; 1984, inventory number; B12619, Cutting width max. 4500 mm, control conventional, cutting height max. 340 mm, motor power 2 x 3,0 KW, saw blade diameter 450 mm, swiveling 0 - 45 °, 220/380 V / 24/14 A / 50 Hz / 6000 W, motor speeds; 2.800 rpm, P max. tire. 7 bar, machine weight approx. 1600 kg, L-W-H approx. 6500 x 1400 x 1600 mm, location; 01587 Riesa	165.00
115	1	centrifugal pump KSB AG, G100-400 SP G10, year built; 2003, inventory number; B12304, Pumping capacity 120 m ³ /h, motor Siemens 30 kW, H= 55 m / 4,5 bar, total 1650 x 750 x 800 mm, weight approx. 800 kg, condition very good, location; 01587 Riesa	160.00
116	1	centrifugal pump KSB AG, G100-400 SP G10, year built; 2003, inventory number; B12305, Pumping capacity 120 m ³ /h, motor Siemens 30 kW, H= 55 m / 4,5 bar, total 1650 x 750 x 800 mm, weight approx. 800 kg, condition very good, location; 01587 Riesa	160.00
117	1	centrifugal pump ESP Groupe, VM-HM HW, year built; 2003, inventory number; B12323, cantilever pump with bearing housing, manufacturer ESP Groupe EVA SEIM France, pump type; VM-HM HW (VHW 150 1450 C Water), pump capacity approx. 200 m ³ /h, DN150 , 1450 rpm, motor manufacturer away, power 30 kW, weight of pump approx. 850 kg, dimensions approx. 3000 x 1100 x 800 mm, condition unused, location; 01587 Riesa	160.00
118	1	centrifugal pump Andritz, S125-350, year built; 2003, inventory number; B12329T, Pump capacity 50 m ³ /h, H= 35 m, n= 1500 rpm, P= 30 kW, Helmke drive motor power 30 kW; 1470 rpm, total size approx. 1700 x 600 H 650 mm, location; 01587 Riesa	150.00





Lot	Number	Description	Starting Bid €
127	1	sandblasting unit Straaltechniek international, 62-50, inventory number; N198, mobile, with suction and dust filter, (SSM 62N-050), machine no.; 173, max. pressure 4 bar, frame with 4 castors, size approx. 1100 x 700 x 1750 mm, weight approx. 210 kg, location; 01587 Riesa	125.00
128	1	wing mixer ITT Flygt AB, M18-11-4AL, inventory number; B12079, for biogas or sewage plants, Banana SR agitator, propeller diameter approx. 1800 mm, blade/propeller length approx. 850 mm, blade/propeller width approx. 420 mm, submersible motor Flygt 4430.010, 690/400 V; 4,8/8,3 A; 50 Hz; IP68, power 4,0 kW, applications; Activated sludge treatment, conventional treatment, oxidation ditches, water reservoirs, ice removal, oxygenation in lakes and harbours, biogas production tanks, waste water agitator, total approx. 1800 x 1300 x 600 mm, weight approx. 290 kg, location; 01587 Riesa	120.00
129	1	wing mixer ITT Flygt AB, M18-11-4AL, inventory number; B12079, for biogas or sewage plants, manufacturer FLYGT, type; M18-11-4AL / Banana SR agitator, propeller diameter approx. 1800 mm, blade/propeller length approx. 850 mm, blade/propeller width approx. 420 mm, submersible motor Flygt 4430.010, 690/400 V; 4,8/8,3 A; 50 Hz; IP68, power 4,0 kW, applications; Activated sludge treatment, conventional treatment, oxidation ditches, water reservoirs, ice removal, oxygenation in lakes and harbours, biogas production tanks, waste water agitator, total approx. 1800 x 1300 x 600 mm, weight approx. 290 kg, location; 01587 Riesa	120.00
130	1	wing mixer ITT Flygt AB, M18-11-4AL, inventory number; B12079, for biogas or sewage plants, manufacturer FLYGT, type; M18-11-4AL / Banana SR agitator, propeller diameter approx. 1800 mm, blade/propeller length approx. 850 mm, blade/propeller width approx. 420 mm, submersible motor Flygt 4430.010, 690/400 V; 4,8/8,3 A; 50 Hz; IP68, power 4,0 kW, applications; Activated sludge treatment, conventional treatment, oxidation ditches, water reservoirs, ice removal, oxygenation in lakes and harbours, biogas production tanks, waste water agitator, total approx. 1800 x 1300 x 600 mm, weight approx. 290 kg, location; 01587 Riesa	120.00
131	1	wing mixer ITT Flygt AB, M18-11-4AL, inventory number; B12079, for biogas or sewage plants, manufacturer FLYGT, type; M18-11-4AL / Banana SR agitator, propeller diameter approx. 1800 mm, blade/propeller length approx. 850 mm, blade/propeller width approx. 420 mm, submersible motor Flygt 4430.010, 690/400 V; 4,8/8,3 A; 50 Hz; IP68, power 4,0 kW, applications; Activated sludge treatment, conventional treatment, oxidation ditches, water reservoirs, ice removal, oxygenation in lakes and harbours, biogas production tanks, waste water agitator, total approx. 1800 x 1300 x 600 mm, weight approx. 290 kg, location; 01587 Riesa	120.00
132	1	screw compressor Bauer, ERL 150 SS Z, year built; 1979, inventory number; B12394, No.; 139-0825, year of construction 1979, operating hours 8901 h, volume; 19300 ltr./min., operating pressure; 7.5 bar, output; 110 kW, 3120 rpm, total approx. 2.45 x 1.95 H 1.70 m, location; 01587 Riesa	120.00
133	1	radial blower Rippert GmbH, S8-400, year built; 1979, inventory number; B12411, Volume flow; 12500 m³/h, total pressure 4000 Pa, inlet opening Ø 400 mm, outlet opening 450 x 300 / Ø 400 mm, drive motor AEG AM200LV-4, 380 V, 58 A, 50 Hz, 30 kW, 1470 rpm, total approx. 2000 x 1100 H 1250 mm, location; 01587 Riesa	120.00
134	1	rotary blowers Aerzener Maschinenfabrik, GMA 11.4, year built; 1992, inventory number; B12687, P= 7.0 kW, n= 1955 rpm, Q(1)= 5.7 m³/min, p(1)= 1.0 bar, p(2)= 0.5 bar, p= 500 mbar, motor ABB, 7.5 kW ; 2885 rpm, size approx. 1750 x 800 H 800 mm, location; 01587 Riesa	120.00



Lot	Number	Description	Starting Bid €
135	1	press brake Wilhelm Jonescheidt Maschinenfabrik, TAP 1060, inventory number; B10880, "Hamburger" - compressed air press brake, pressing force 6t, permissible air pressure 6 atü, max. working length 1060 mm, bending capacity at 40kp/cm ² strength, 1000x1.25 at 14 mm die width, 1000x1.5 at 20 mm die width, location; 01587 Riesa	115.00
136	1	eccentric screw pump Netzsch Pumpen GmbH, NE60B, year built; 1979, inventory number; B11795, Pump body and worm shaft made of stainless steel, year 1979, power 78 - 390 l/min, 220/380 V, 13.5/7.8 A, 50 Hz, 3.6 kW; 1445/78 rpm, connections; NW100/114,3 ND16 bar 1.4541 DIN2633, external flange Ø 220 mm, total approx. 2300 x 370 H 450 mm, location; 01587 Riesa	110.00
137	1	eccentric screw pump Netzsch Pumpen GmbH, NE60B, year built; 1979, inventory number; B11795, Pump body and worm shaft made of stainless steel, year 1979, power 78 - 390 l/min, 220/380 V, 13.5/7.8 A, 50 Hz, 3.6 kW; 1445/78 rpm, connections; NW100/114,3 ND16 bar 1.4541 DIN2633, external flange Ø 220 mm, total approx. 2300 x 370 H 450 mm, location; 01587 Riesa	110.00
138	1	shaper Strigon, GH 560/S, year built; 1975, inventory number; B12911, Motor 4.8 kW, max. planing length max. 560 mm, stroke rates per minute; 12, 18, 25, 35, 50, 70, 100, 140, clamping table size approx. 550 x 400 mm / lateral approx. 400 x 300 mm, distance table and ram approx. 50 to 400 mm, total approx. 1900 x 1200 H 1500 mm, weight approx. 1600 kg, location; 01587 Riesa	110.00
139	1	Electric motor 132 kW WEG Germany GmbH, 315S/M-2, year built; 2003, inventory number; B11997, Power; 132 kW; speed 2965 rpm, version B3, 380/660 V; 232/134 A; 50 Hz; IP55, EX II/2 3D IP55 125°C (zone 22), shaft Ø approx. 65 mm, total approx. 1100 x 650 x 820 mm, weight approx. 858 kg, location; 01587 Riesa	105.00
140	1	Heatable stainless steel mixing tank LTH Dresden, year built; 2007, inventory number; B12991, electrically or with hot water heatable, manufacturer LTH Dresden, nominal volume 350 litres, pressureless, material; 1.4301, turbo agitators PV-2-0,18, year of construction 2007, speed 71 rpm, 2 electric heating rods, bacon pump CY-4281.0407, H 100 mFS; Q 30 l/min; P 1,5 kW, water pump Grundfos UPS 25-30 180 Class H, level switch Kobold NWS-20, total approx. 1600 x 1500/1900 H 1800/2200 mm, location; 01587 Riesa	100.00
141	1	Stainless steel plate heat exchanger Alfa Laval, P22-HRBL, year built; 1982, inventory number; 27779, Cream cooler, capacity; 40 l, exchanger area; approx. 650 x 700 x 250 mm, inlet/outlet Ø; approx. 50/65 mm, total dimensions; approx. 1,700 x 350 x 1,000 mm, location; 01587 Riesa	90.00
142	1	herb cutting machine Gevaar, inventory number; 27800, Shredder or herb cutter for e.g. red cabbage, white cabbage, red cabbage, manufacturer; Gevaar, cutting chamber Ø approx.; 800 mm, rotor/cutting disc Ø approx.; 700 mm, filler flap approx. 900 x 800 H 300 mm, filling flap adjustable via Pfaff cable winch, outlet Ø approx.; 800 mm, drive motor Vector RF60-DV112M-4, 220/380 v, 15,2/8,7 A, 50 Hz, power 4 kW, speed 275 rpm, dimensions total approx.; 2000 x 1200 H 2300 mm, weight; 421 kg, location; 01587 Riesa	90.00
143	1	Window and door frame press Unbekannt, inventory number; B12164, for frames of approx. B400-1000 x L1400-2300 mm, space requirement approx. 3000 x 1800 H 1150 mm, location; 01587 Riesa	90.00



Lot	Number	Description	Starting Bid €
144	1	plate heat exchanger Fortschritt Landmaschinen, PAP-4/1226, year built; 1983, inventory number; 28144, VEB Kyffhäuserhütte Artern, type; PAP-4/1226, ELN-No. 3358520, TGL 39520, year of construction 1983, material; stainless steel, capacity; 1000 l/h, temp. from 20°C to 95°C, heating medium; steam, steam quantity; 142 kg/h; 0,5 kp/cm², exchanger surface approx.; 100 x 280 x 950 mm, total dimensions; approx. 1300 x 650 x 1520 mm, weight approx. 300 kg, location; 01587 Riesa	80.00
145	1	vibration chute Jöst, 2270x450, year built; 1995, inventory number; B12069, Channel length approx. 2270 mm, Channel width approx. 450 mm, Channel height approx. 150 mm, JVM MS-6-50Hz, 380-440 V; 10.2 A; 50 Hz, Total approx. 2350 x 800 x 800 mm, Weight approx. 322 kg, location; 01587 Riesa	80.00
146	1	veneer scissors Unbekannt, inventory number; B12161, Cutting length 1,800 mm, Demag drive motor, 220/380 V; 50 Hz; 2.8 kW, total approx. 2400 x 500 x 1100 mm, location; 01587 Riesa	75.00
147	1	Guide and feed spindle lathe WMW Großmaschinenbau, DLZ 630, year built; 1962, inventory number; 21090, turning length 1000 mm, turning diameter 630 mm, bar capacity 72 mm, weight approx. 3900 kg, location; 01587 Riesa	70.00
148	1	diesel filling station Deutsche Gerätebau GmbH, year built; 1979, inventory number; 23616, with pump, manufacturer Deutsche Gerätebau GmbH Salzkotten, content 3500 litres, hazard class A3, location; 01587 Riesa	70.00
149	1	industrial fan Anton Piller GmbH, 3376 RKX 80 200, inventory number; B11757, Volume flow 3200 m³/h, pressure 3,300 Pa, 4.30 kW, speed 2,465 rpm, operating temperature max. 140 °C, outlet Ø for pipe connection 200 mm, flange outer Ø 275 mm, flange 280 mm, intake reduced to Ø 300 mm, outer Ø for flange connection 440 mm, drive motor Siemens IEC 132S, 380/660 V 15,2/8,9 A 50 Hz 7,5 kW 2.930 rpm, weight; approx. 300 kg, total approx. 1400 x 1000 H 1100 mm, location; 01587 Riesa	70.00
150	1	chip conveyor Unbekannt, inventory number; B11809, lower belt length 1300 mm, pitch 800 mm, upper belt length 600 mm, ejection height 800 mm, belt width 140 mm, pump and gear motor, total approx.; 2600 x 600 H 1100 mm, weight approx. 350 kg, location; 01587 Riesa	70.00
151	1	Conveyor belt drive station Ammann, Band 650, inventory number; B11906, Model No. JC 53555, roll width approx. 720 mm, roll diameter approx. 500 mm, drive gear motor STRIEBEL, gear type; 5316.11.05012.05, power; 11 kW; 1500 rpm, gear ratio i= 41,3;1 U, Md; 2892 Nm, total approx. 1500 x 1200 x 800 mm, weight approx. 830 kg, location; 01587 Riesa	70.00
152	1	industrial fan Venta GmbH, MHI 25, inventory number; B11962, Volume V= 4000 m³/h, t= 80 °C, density 1.0 kg/m³, P(t)= 30 mbar, n= 2900 rpm, P(shaft)= 4.1 kW, P(motor)= 11 kW, blow-in opening approx. Ø 250 mm, blow-out opening approx. 280 x 180 mm, motor AEG, 380/660 V; 22/12.7 A; 50 Hz, power; 11 kW; 2930 rpm, total approx. 900 x 850 x 850 mm, location; 01587 Riesa	70.00
153	1	veneer scissors Unbekannt, inventory number; B12162A, Cutting length 2200 mm, Demag drive motor, 220/380 V; 50 Hz; 2.0 kW, total approx. 2900 x 600 x 1200 mm, location; 01587 Riesa	70.00
154	1	veneer scissors Unbekannt, inventory number; B12162B, Cutting length approx. 2900 mm, Demag drive motor, 220/380 V; 50 Hz; 2.0 kW, total approx. 3500 x 600 x 1200 mm, location; 01587 Riesa	70.00



Lot	Number	Description	Starting Bid €
155	1	veneer scissors Unbekannt, inventory number; B12162B, Cutting length approx. 2900 mm, Demag drive motor, 220/380 V; 50 Hz; 2.0 kW, total approx. 3500 x 600 x 1200 mm, location; 01587 Riesa	70.00
156	1	veneer scissors Unbekannt, inventory number; B12162B, Cutting length approx. 2900 mm, Demag drive motor, 220/380 V; 50 Hz; 2.0 kW, total approx. 3500 x 600 x 1200 mm, location; 01587 Riesa	70.00
157	1	Dust or aroma filter Rixner, BG 70, year built; 2001, inventory number; B12912, Volume flow; 300 m³/h, pressure ext. 200 Pa, motor 2770 rpm, motor power 0.16 kW, voltage; 400 V, nominal current; 4.41 A, 16 filter cartridges approx. Ø 150 mm L 460 mm, connection opening at top approx. Ø 110 mm, total approx. 900 x 900 H 1700 mm, location; 01587 Riesa	70.00
158	1	Dust or aroma filter Berliner Luft Klimatechnik GmbH, BG 70, year built; 2006, inventory number; B12913, Volume flow 300 m³/h, class EU7, external pressure; 150 Pa, fan motor; 2770 rpm, voltage; 400 V; 4.41 A; 0.16 kW, 16 filter cartridges approx. Ø 150 mm L 460 mm, connection opening at top approx. 120 mm, total approx. 850 x 900 H 1800 mm, location; 01587 Riesa	70.00
159	1	trough auger Unbekannt, inventory number; 24420, progressive thread, sturdy design, dimensions L 2,000 x W 380 x H 460, conveying length 1,800 mm, outlet and inlet 500 x 370 mm, screws Ø 370 mm, location; 01587 Riesa	60.00
160	1	centrifugal fan Mühlen- und Maschinenbau Zeitz, 630/140, year built; 1982, inventory number; 25134, Flow rate; 1,500 m³/h, 4.50 kW / 2,880 rpm, Pressure; 6,767 Pa, Inlet Ø; 140 mm, Outlet; 180 x 100 mm, Drive motor VEM KMR 100 L 2, 380 V 11.0 A 50 Hz 5.50 kW 2,880 rpm IP44, Length 600 mm, Width 900 mm, Height 970 mm, location; 01587 Riesa	60.00
161	1	hydraulic power unit Unbekannt, year built; 1992, inventory number; 26854, Motor; E.L.D. 160M4, power 11 kW 1460 rpm, voltage 380/660 V frequency 50 Hz, tank approx.; 1000 x 800 x 550 mm, total approx.; 1000 x 950 H 1300 mm, location; 01587 Riesa	60.00
162	1	Conveyor belt drive station Ammann, Band 800, inventory number; B11908, Model No.; JC 52877, roll width approx. 920 mm, roll diameter approx. 410 mm, drive gear motor STRIEBEL 4AP132M-4, power; 7.5 kW; 1450 rpm, 380/660 V; 15.2/8.7 A; 50 Hz; IP54, gear ratio i= 20.5; 1 U, Md; 979 Nm, total approx. 1700 x 1000 x 600 mm, weight approx. 365 kg, location; 01587 Riesa	60.00
163	1	strapping machine Strapex, Unipack SMA 30, inventory number; B13005, belt width 12 mm, belt tension max. 700N, frame size approx. 850 x 800 mm, table length approx. 600 mm, frame on 4 rollers, size approx. 1400 x 610 H 1720 mm, location; 01587 Riesa	55.00
164	1	Check Belt Weigher Garvens Automation GmbH, VL-100, year built; 1998, inventory number; B12296T, with conveyor belt, load cell; SCC-300, weighing range 0.2 kg - 60 kg, accuracy; 10 g, weighing speed; 10 pack/min, conveyor belt W 600 mm x L 1300 mm x H 760 mm, weight approx. 231 kg, location; 01587 Riesa	50.00
165	1	grinding wheel Norton, F07065873, year built; 2011, inventory number; B10778, Control wheels or dressing wheels, unused stock, manufacturer; Norton, type no.; F07065873, Mod. 320525-K27-H, Date; 07.05.2011, Dimensions; 610 x 508 (2x254) x 304.8 mm (1 set - 2 discs), 61463667835, straight disc, centreless grinding, 22A80205B762405, 106077932, 1752411, Maximum working speed; 50 m/s, Permissible speed; 1560 rpm, Tested according to EN 12413, location; 01587 Riesa	48.00



Lot	Number	Description	Starting Bid €
166	1	guillotine shears VEB Blechtafel Scherenwerk Gera, 10.0.2,8/1250, year built; 1950, inventory number; 24099, Cutting length max. 1250 mm, sheet thickness max. 2.8 mm, connected load 2.2 kW, location; 01587 Riesa	45.00
167	1	chip conveyor Unbekannt, inventory number; B11356, lower belt length 2000 mm, pitch 1900 mm, ejection height 1450 mm, belt width 370 mm, driver 320 mm, trough width 400 mm, total 3100 x 700 H 1900 mm, pump Interlit Joistgen GmbH, 230/400 V, 50 Hz, 1.1 kW, 250 l/min, chain drive motor NORD, type SK-63S/4, power 0.12 kW, location; 01587 Riesa	45.00
168	1	axial fan Unbekannt, Vme 71.4.5-90D, inventory number; B12029, Volume flow; approx. 10,000 m³/h, Speed; 1430 rpm, Speed max.; 1500 rpm, Density; 1.2 kg/m³, Temp. 40 °C, Drive motor Richard Zimmermann K.G., Type; DRE1/4-90S, 220/380 V; 50 Hz, Power; 1.0 kW / 1420 rpm, Suction side inside Ø approx. 700 mm / Flange approx. 800 mm, Outlet with grille Ø approx. 950 mm, Length approx. 750 mm, location; 01587 Riesa	45.00
169	1	axial fan Unbekannt, Vme 71.4.5-90D, inventory number; B12029, Volume flow; approx. 10,000 m³/h, Speed; 1430 rpm, Speed max.; 1500 rpm, Density; 1.2 kg/m³, Temp. 40 °C, Drive motor Richard Zimmermann K.G., Type; DRE1/4-90S, 220/380 V; 50 Hz, Power; 1.0 kW / 1420 rpm, Suction side inside Ø approx. 700 mm / Flange approx. 800 mm, Outlet with grille Ø approx. 950 mm, Length approx. 750 mm, location; 01587 Riesa	45.00
170	1	axial fan Unbekannt, Vme 71.4.5-90D, inventory number; B12029, Volume flow; approx. 10,000 m³/h, Speed; 1430 rpm, Speed max.; 1500 rpm, Density; 1.2 kg/m³, Temp. 40 °C, Drive motor Richard Zimmermann K.G., Type; DRE1/4-90S, 220/380 V; 50 Hz, Power; 1.0 kW / 1420 rpm, Suction side inside Ø approx. 700 mm / Flange approx. 800 mm, Outlet with grille Ø approx. 950 mm, Length approx. 750 mm, location; 01587 Riesa	45.00
171	1	battery-powered pallet trucks Atlet, LEH 16C, year built; 2001, inventory number; B12724, Operating hours approx. 5,800, max. load 1600 kg, fork length 1200 mm, battery year 2003, charger, Hawker BP962-62033, total approx. 1700 x 660 x 760/1450 mm, weight approx. 480 kg, location; 01587 Riesa	45.00
172	1	battery-powered pallet trucks Atlet, CLL 180, year built; 2003, inventory number; B12998Z, Operating hours approx. 2156 h, max. load 1800 kg, dead weight 280 kg, battery weight min./max.; 115/225 kg, battery; 24 V; incl. charger, fork length approx. 1190 mm, fork width approx. 160 mm, total approx. 1800 x 660 H 850/1500 mm, location; 01587 Riesa	45.00
173	1	battery-powered pallet trucks Atlet, CLL 180, year built; 2003, inventory number; B13001Z, Operating hours approx. 5100 h, max. load 1800 kg, net weight 280 kg, battery weight min./max.; 115/225 kg, battery; 24 V; incl. charger, fork length approx. 1190 mm, fork width approx. 160 mm, total approx. 1800 x 660 H 850/1500 mm, location; 01587 Riesa	45.00
174	1	Conveyor belt drive station Ammann, Band 500, inventory number; B11907, Roll width approx. 570 mm, roll diameter approx. 400 mm, drive gear motor STRIEBEL 4AP132M-4, power; 7.5 kW; 1450 rpm, 380/660 V; 15.2/8.7 A; 50 Hz; IP54, transmission i= 20.5; 1 U, Md; 979 Nm, total approx. 1500 x 1100 x 600 mm, weight approx. 330 kg, location; 01587 Riesa	40.00
175	1	Door hinge boring machine Schüco, 293784, inventory number; B12863, for drilling the fixing holes for 2-part and 3-part Schüco door hinges in the blind and leaf frame, manufacturer Schüco, type 293784, motor; 230/400 V; 1.1 kW, speed; 2800 rpm, 8 drill holders for Ø 10 mm drills, base plate approx. 300 x 500 H 65 mm, weight approx. 90 kg, total with frame approx. 300 x 500 H 1400 mm, location; 01587 Riesa	40.00



Lot	Number	Description	Starting Bid €
176	1	Foil shrink tunnel ZVS Sellier & Bellot, BSF 13-1010, inventory number; B13125, Foil shrink tunnel, manufacturer ZVS Sellier & Bellot, type BSF 13-1010, flow opening approx. 600 x 320 mm, heating module length approx. 1000 mm, post ventilation length approx. 500 mm, manual temperature adjustment from 50 to 450 °C, 3x 380 V; 25 A; 50 Hz; 16.4 kVA, control 220/24 V, total approx. 3500 x 1200 H 1600 mm, weight approx. 630 kg, location; 01587 Riesa	40.00
177	1	tool grinding machine Kuhlmann KG, K 500, inventory number; B11855, Clamping surface approx. 900 x 120 mm, speed drive spindle 6000 rpm up to grinding wheel Ø 100 mm, speed drive spindle 3000 rpm grinding wheel 100 -175 mm, motor power 1.1 kW; 2800 rpm; 220/380 V; 4.5/2.6 A; 50 Hz, machine weight approx. 500 kg, machine approx. 1550 x 1200 H 1400 mm, location; 01587 Riesa	36.00
178	1	plate heat exchanger SWEP Italia srl, GC26L-P-28-316/EPDM, year built; 1998, inventory number; 28011, Pressure chamber 1&2 max. temperature 150 °C, max. operating pressure 10 bar, test pressure 13 bar, exchanger surface approx. 125 x 400 x 950 mm, inlet/outlet opening approx. Ø 100 mm, total approx.; 500 x 900 x 1250 mm,, location; 01587 Riesa	35.00
179	1	transverse sliding device Bürkle, AS-WO-S, year built; 2000, inventory number; B12383, Machine No.; 936202, table size approx. 3360 x 1850 mm, table height approx. 1080 mm (adjustable by approx. 100 mm), sliding belt length approx. 5000 mm, slide width 1400 mm, slide pneumatically high foldable, cut-out for feed 2x 40 x 600 mm (distance in the middle 720 mm), sliding drive geared motor SEW Eurodrive, 220/380 V; 50 HZ; 0.76 kW; 1380/85 rpm, total approx. 5800 x 2100 H 1900 mm; 50 HZ; 1380/85 rpm, total approx. 5800 x 2100 H 1900 mm, table height approx. 1080 mm (adjustable by approx. 100 mm), sliding belt length approx. 5000 mm, slide width 1400 mm, slide pneumatically high foldable, cut-out for feed 2x 40 x 600 mm (distance in the middle 720 mm)., location; 01587 Riesa	35.00
180	1	stainless steel tank Erweka Verpackungstechnik, L-1000, inventory number; B12766, with lid, manufacturer Erweka Verpackungstechnik, type L-1000, capacity 1000 litres, tank Ø approx. 1200 mm, tank height up to outlet approx. 1600 mm, outlet Ø approx. 100 mm, total approx. Ø 1300 H 2100 mm, location; 01587 Riesa	35.00
181	1	copy router Wegoma, KF226, year built; 1993, inventory number; B12872, for machining aluminium and steel profiles, milling motor 380 V; 1.1 kW, travel x-280 mm, y-110 mm, z-120 mm, transport size approx. 800 x 600 x 1600 mm, weight approx. 110 kg, location; 01587 Riesa	35.00
182	1	Electric pallet lifter Vitax Handling, VNEF 10, year built; 2006, inventory number; B12983, Lifting force; 1000 kg, net weight 366 kg, 400 V; 2.2 A; 50 Hz; 0.55 kW, lifting fork length approx. 1220 mm, lifting fork width max. 1060 mm, with widened bearing surface and extra fork width stop angle, total approx. 1650 x 1250 H 1300 mm, location; 01587 Riesa	35.00
183	1	Diamond grinding wheel Winter, HP 700-600-21,9 21 U, inventory number; B10798, Stock goods in wooden box, manufacturer; Winter, HP 700-600-21,9 21U, size; 600,04 x 21,96 x 132 mm, F07070010, v.zul.= 160 m/s, n.zul.= 5095 rpm, with Tech. drawing, box size approx. 800 x 700 x 320 mm, pane weight approx. 46 kg, total weight approx. 75 kg, location; 01587 Riesa	30.00
184	1	Diamond grinding wheel Winter, HP 700-600-21,9 21 U, inventory number; B10799, Diamond Boron Nitride CBN - VSS- grinding wheel, stock in wooden box, manufacturer; Winter, HP 700-600-21,9 21U, size; 600,04 x 21,96 x 132 mm, F07070010, v.zul.= 160 m/s, n.zul.= 5095 rpm, with Tech. drawing, box size approx. 800 x 700 x 320 mm, pane weight approx. 46 kg, total weight approx. 75 kg, location; 01587 Riesa	30.00



Lot	Number	Description	Starting Bid €
185	1	stainless steel tank ZUEGG, AV0027/800, year built; 2000, inventory number; B13057, Round tank without lid, volume 800 litres, opening approx. Ø 390 mm, outlet at bottom with ball valve, forklift fork holder, weight 153 kg, total approx. Ø 1100 x H 1700 mm, location; 01587 Riesa	30.00
186	1	stainless steel tank ZUEGG, AV0027/800, year built; 2001, inventory number; B13060, Round tank without lid, volume 800 litres, opening approx. Ø 390 mm, outlet at bottom with ball valve, forklift fork holder, weight 153 kg, total approx. Ø 1100 x H 1700 mm, location; 01587 Riesa	30.00
187	1	stainless steel tank ZUEGG, 800, year built; 1991, inventory number; B13062, Round tank with lid, volume 800 litres, pressure 1 bar, opening approx. Ø 390 mm, outlet at bottom with ball valve, with fork lift holder, weight tare; 163 kg, total approx. Ø 1100 x H 1750 mm, location; 01587 Riesa	30.00
188	1	stainless steel tank ZUEGG, 800, year built; 1994, inventory number; B13063, Round tank with lid, volume 800 litres, pressure 1 bar, opening approx. Ø 390 mm, outlet at bottom with ball valve, with fork lift holder, weight tare; 163 kg, total approx. Ø 1100 x H 1750 mm, location; 01587 Riesa	30.00
189	1	stainless steel tank ZUEGG, 800, year built; 1987, inventory number; B13064, Round tank with lid, volume 800 litres, pressure 1 bar, opening approx. Ø 390 mm, outlet at bottom with ball valve, with fork lift holder, weight tare; 163 kg, total approx. Ø 1100 x H 1750 mm, location; 01587 Riesa	30.00
190	1	Servo helical bevel gearboxemoto Lenze, GKS07-3, inventory number; B11206, V SBR SKARS090-22, 519 NM, 71 rpm, I= 57.501, 303 A, 140 Hz, CLP-HC 320, motor type; MDSKARS090-22, 350 V, 10.2 A, 140 Hz, IP54, 9.5 Nm, 4.1 kW, 4110 rpm, encoder RS00000000, C86 20/DSKA90-140, hollow shaft Ø approx. 50 mm, total approx. 700 x 200/360 x 310 mm, location; 01587 Riesa	25.00
191	1	Servo helical bevel gearboxemoto Lenze, GKS07-3, inventory number; B11207, V SBR SKARS090-22, 519 NM, 71 rpm, I= 57.501, 303 A, 140 Hz, CLP-HC 320, motor type; MDSKARS090-22, 350 V, 10.2 A, 140 Hz, IP54, 9.5 Nm, 4.1 kW, 4110 rpm, encoder RS00000000, C86 20/DSKA90-140, hollow shaft Ø approx. 50 mm, total approx. 700 x 200/360 x 310 mm, location; 01587 Riesa	25.00
192	1	Servo helical bevel gearboxemoto Lenze, GKS07-3, inventory number; B11208, V SBR SKARS090-22, 519 NM, 71 rpm, I= 57.501, 303 E, 140 Hz, CLP-HC 320, motor type; MDSKARS090-22, 350 V, 10.2 A, 140 Hz, IP54, 4.1 kW, 4110 rpm, encoder RS00000000, C86; 20/DSKA90-140, hollow shaft Ø approx. 50 mm, total approx. 700 x 230 x 310 mm, location; 01587 Riesa	25.00
193	1	Servo helical bevel gearboxemoto Lenze, GKS07-3, inventory number; B11209, V SBR SKARS090-22, 519 NM, 71 rpm, I= 57.501, 303 E, 140 Hz, CLP-HC 320, motor type; MDSKARS090-22, 350 V, 10.2 A, 140 Hz, IP54, 4.1 kW, 4110 rpm, encoder RS00000000, C86; 20/DSKA90-140, hollow shaft Ø approx. 50 mm, total approx. 700 x 230 x 310 mm, location; 01587 Riesa	25.00
194	1	Servo helical bevel gearboxemoto Lenze, GKS09-3N, inventory number; B11210, SBR MDSKARS090-22, 2839 NM, 13 rpm, I= 314.659, 303A, 140 Hz, CLP-HC 320, motor type; MDSKARS090-22, 350 V, 10.2 A, 140 Hz, IP54, 9.5 Nm, 4.1 kW, 4110 rpm, encoder RS02761695, C86; 20/DSKA90-140, hollow shaft Ø approx. 50 mm, total approx. 890 x 290 x 390 mm, location; 01587 Riesa	25.00
195	1	servo motor SEW Eurodrive, KH87/T, inventory number; B11213, with brake, bevel gear motor, CMP80M/BP/KY/AK1H/SB1, hollow shaft approx. Ø 65 mm, shrink disc, ring spring, 400 V, 13.4 A, IP65, motor 18.70 Nm; 3000 rpm, gear 3240 Nm; 44.0/4500 rpm, i= 102.71, total approx. 710 x 300 x 350 mm, weight approx. 118 kg, location; 01587 Riesa	25.00
196	1	double bench grinder Greif, DV 60, inventory number; B11595, disc Ø approx. 600 mm, disc width approx. 60 mm, 1x grinding disc + 1x disc, drive motor 380 V, 9.0 A, 4 kW, 950 rpm, total approx. 1700 x 850 H 1200 mm, weight approx. 775 kg, location; 01587 Riesa	25.00



Lot	Number	Description	Starting Bid €
197	1	grinding wheel Norton, F07065873, year built; 2012, inventory number; B10777, Control wheel or dressing wheel, unused stock, manufacturer; Norton, type no. F07065873, Mod. 3231637-K27-H, Date; 16.04.2012, Dimensions; 610 x 508 x 304.8 mm, 61463667835, 107078000, 2544358, Maximum working speed; 50 m/s, Permissible speed; 1560 rpm, Tested according to EN 12413, location; 01587 Riesa	24.00
198	1	double bench grinder Unbekannt, inventory number; B11596, grinding wheel Ø 400 mm x 650 mm, disc Ø 500 mm x 85 mm, motor without nameplate, total approx. 1550 x 900 H 1150 mm, weight approx. 898 kg, location; 01587 Riesa	20.00
199	1	industrial fan Wilhelm Gebhardt GmbH, KER 200 RDO, year built; 1985, inventory number; B11973, PVC/PVDF plastic housing, volume 2000 m³/h, pressure 1010 Pa, n= 2480 rpm, n(max)= 2800 rpm, P(w)=0,8 kW, density 1,2 kg/m³, temperature max. 60 °C, belt drive, motor Siemens, 380-420 V; 1,80/3,30 A; 50 Hz; 0,33/1,50 kW; IP55, inlet opening approx. Ø 200 mm, outlet opening approx. Ø 200 mm, total approx. 1450 x 500 H 800 mm, location; 01587 Riesa	20.00
200	1	drying oven Heraeus GmbH Hanau, RT500, inventory number; B12361, Temperature max. 220 °C, 220 V; 4.5 A, drying room approx. Ø 500 mm x 400 mm, total approx. 700 x 600 x 800 mm, location; 01587 Riesa	20.00
201	1	drying oven Heraeus GmbH Hanau, RT500, inventory number; B12361, Temperature max. 220 °C, 220 V; 4.5 A, drying room approx. Ø 500 mm x 400 mm, total approx. 700 x 600 x 800 mm, location; 01587 Riesa	20.00
202	1	booster water pump KSB AG, Movichrom NG 9/73R, inventory number; B12484, Model 1-P25-856324, power Q= 9 m³/h, H= 80 m, N= 2900 rpm, motor KSB 1A/112M1-2, 380 V; 7,81 A; 50 Hz; 4 kW; 2865-2885 rpm, inlet/outlet opening approx. Ø 40 mm / flange 150 mm, total approx. 270 x 270 x 900 mm, location; 01587 Riesa	15.00
203	1	submersible pump Brinkmann Pumpen, STH360/460-EX+190, inventory number; B12492, for industrial water, cooling emulsions, cooling and cutting oils, flow rate 240 l/min, delivery head 140 m, immersion depth approx. 450 mm, power; 10 kW, 400 V; 23.0 A; 50 Hz; 2900 rpm, suction opening approx. Ø 120 mm, total approx. H 1070 Ø 400 mm, location; 01587 Riesa	15.00
204	1	submersible pump Brinkmann Pumpen, STH360/460-EX+190, inventory number; B12493, for industrial water, cooling emulsions, cooling and cutting oils, flow rate 240 l/min, delivery head 140 m, immersion depth approx. 450 mm, power; 10 kW, 400 V; 23.0 A; 50 Hz; 2900 rpm, suction opening approx. Ø 120 mm, total approx. H 1070 Ø 400 mm, location; 01587 Riesa	15.00
205	1	submersible pump Brinkmann Pumpen, STH360/460-EX+190, inventory number; B12494, for industrial water, cooling emulsions, cooling and cutting oils, flow rate 240 l/min, delivery head 140 m, immersion depth approx. 450 mm, power; 10 kW, 400 V; 23.0 A; 50 Hz; 2900 rpm, suction opening approx. Ø 120 mm, total approx. H 1070 Ø 400 mm, location; 01587 Riesa	15.00
206	1	submersible pump Brinkmann Pumpen, STH360/460-EX+190, inventory number; B12495, for industrial water, cooling emulsions, cooling and cutting oils, flow rate 240 l/min, delivery head 140 m, immersion depth approx. 450 mm, power; 10 kW, 400 V; 23.0 A; 50 Hz; 2900 rpm, suction opening approx. Ø 120 mm, total approx. H 1070 Ø 400 mm, location; 01587 Riesa	15.00



Lot	Number	Description	Starting Bid €
207	1	cable winch Pfaff Silberblau, 1135000, inventory number; 25203, used, Tested up to 1/2013, winch can be operated manually and with motor, with stainless steel cable length approx. 12 m, for cable diameter up to 6 mm, max. cable length 40 m, brake gear motor ABM type EFB3/4DF90LA power 1,5 kW / 1390 rpm / 380 V, dimensions approx. 700 x 600 x 400 mm, location; 01587 Riesa	10.00
208	1	cable winch Pfaff Silberblau, 1135000, inventory number; 25203, used, Tested up to 1/2013, winch can be operated manually and with motor, with stainless steel cable length approx. 12 m, for cable diameter up to 6 mm, max. cable length 40 m, brake gear motor ABM type EFB3/4DF90LA power 1,5 kW / 1390 rpm / 380 V, dimensions approx. 700 x 600 x 400 mm, location; 01587 Riesa	10.00
209	1	hydraulic cylinder Hunger, 119642, year built; 1999, inventory number; B12679T, Stroke 150 mm, pressure 190 bar, piston rod Ø approx. 100 mm, pin Ø approx. 90 mm, base plate approx. 490 x 360 x 100 mm, hole spacing approx. 400 x 275 mm, hole Ø approx. 40 mm, total approx. 1200 x 490 H 300 mm, location; 01587 Riesa	10.00
210	1	hydraulic cylinder Hunger, 119642, year built; 1999, inventory number; B12679T, Stroke 150 mm, pressure 190 bar, piston rod Ø approx. 100 mm, pin Ø approx. 90 mm, base plate approx. 490 x 360 x 100 mm, hole spacing approx. 400 x 275 mm, hole Ø approx. 40 mm, total approx. 1200 x 490 H 300 mm, location; 01587 Riesa	10.00
211	1	hydraulic cylinder Hunger, 119642, year built; 1999, inventory number; B12679T, Stroke 150 mm, pressure 190 bar, piston rod Ø approx. 100 mm, pin Ø approx. 90 mm, base plate approx. 490 x 360 x 100 mm, hole spacing approx. 400 x 275 mm, hole Ø approx. 40 mm, total approx. 1200 x 490 H 300 mm, location; 01587 Riesa	10.00
212	1	hydraulic cylinder Hunger, 119642, year built; 1999, inventory number; B12679T, Stroke 150 mm, pressure 190 bar, piston rod Ø approx. 100 mm, pin Ø approx. 90 mm, base plate approx. 490 x 360 x 100 mm, hole spacing approx. 400 x 275 mm, hole Ø approx. 40 mm, total approx. 1200 x 490 H 300 mm, location; 01587 Riesa	10.00
213	1	geared motor SEW Eurodrive, S67DT80K4, inventory number; B13084, Power 0.55 kW revolutions 1360/32 rpm, 220/380 V; 3.05/1.75 A; 50 Hz; IP54, type B3 foot motor, shaft diameter approx. 35 mm, total approx. 580 x 330 x 250 mm, weight approx. 40 kg, location; 01587 Riesa	10.00
214	1	safety transformer Elspro Elektrotechnik GmbH, 500 VA, year built; 2011, inventory number; B10972, Portable, input 230 V, output 4x CEE socket outlets 24 V, circuit breaker 2 A, safety transformers according to VDE 0570, DIN EN 61558, solid rubber housing, total approx. 330 x 300 x 240 mm, weight approx. 8 kg, location; 01587 Riesa	5.00
215	1	safety transformer Elspro Elektrotechnik GmbH, 2500 VA, year built; 2012, inventory number; B10973, Portable, input 230 V, output 230 V 1x socket outlet with earthing contact (without earth contact), circuit breaker 10 A, K2 version, insulated and splash-proof, transformer according to VDE 0570, 1 inrush current limiter, total approx. 350 x 300 x 320 mm, weight approx. 20 kg, location; 01587 Riesa	5.00
216	1	safety transformer Elspro Elektrotechnik GmbH, 2500 VA, year built; 2012, inventory number; B10974, Portable, input 230 V, output 230 V 1x socket outlet with earthing contact (without earth contact), circuit breaker 10 A, K2 version, insulated and splash-proof, transformer according to VDE 0570, 1 inrush current limiter, total approx. 350 x 300 x 320 mm, weight approx. 20 kg, location; 01587 Riesa	5.00



Lot	Number	Description	Starting Bid €
217	1	safety transformer Elspro Elektrotechnik GmbH, 2500 VA, year built; 2012, inventory number; B10979, Portable, input 230 V, output 230 V 1x socket outlet with earthing contact (without earth contact), circuit breaker 10 A, K2 version, insulated and splash-proof, transformer according to VDE 0570, 1 inrush current limiter, total approx. 350 x 300 x 320 mm, weight approx. 20 kg, location; 01587 Riesa	5.00
218	1	wood band saw Leopold Bissinger, inventory number; B13123, Band length approx. 5600-5800 mm, table size approx. 1000 x 1400 mm, without saw band, without drive motor, drive via belt pulley, total approx. 1800 x 1100 H 2400 mm, location; 01587 Riesa	5.00
219	1	diaphragm pump Graco, Husky 715, inventory number; B13069, Air operated , Max. Temperature; 65°C, Max. Pressure; 7 bar, max. 60 l/min, size approx. 240 x 200 H 300 mm, location; 01587 Riesa	5.00
220	1	isolating transformer Ismet Transformatoren, TG-S 630, year built; 2010, inventory number; B10964, Single-phase safety and isolating transformer, single-phase safety transformer to DIN EN 61558, VDE 0570, part 2-6, primary mains cable, secondary CEE socket 4x, conditionally short-circuit-proof, transformer in sheet steel housing, protection class IP 43, protection class II, 50/60 Hz, ta 40°C, special voltage; UPRI; 230 V 5 A, USEC; 24 V 26.2 A, total approx. 270 x 220 x 240 mm, weight approx. 15 kg, location; 01587 Riesa	5.00
221	1	isolating transformer Ismet Transformatoren, TG-S 630, year built; 2010, inventory number; B10965, Single-phase safety and isolating transformer, single-phase safety transformer to DIN EN 61558, VDE 0570, part 2-6, primary mains cable, secondary CEE socket 4x, conditionally short-circuit-proof, transformer in sheet steel housing, protection class IP 43, protection class II, 50/60 Hz, ta 40°C, special voltage; UPRI; 230 V 5 A, USEC; 24 V 26.2 A, total approx. 270 x 220 x 240 mm, weight approx. 15 kg, location; 01587 Riesa	5.00
222	1	safety transformer Ismet Transformatoren, TG-S 630, year built; 2010, inventory number; B10966, Portable single-phase safety and isolating transformer, single-phase safety transformer to DIN EN 61558, VDE 0570, part 2-6, primary mains cable, secondary CEE socket 4x, conditionally short-circuit proof, transformer in sheet steel housing, protection class IP 43, protection class II, 50/60 Hz, ta 40°C, special voltage; UPRI; 230 V 5 A, USEC; 24 V 26.2 A, total approx. 270 x 220 x 240 mm, weight approx. 15 kg, location; 01587 Riesa	5.00
223	1	safety transformer Ismet Transformatoren, TG-S 630, year built; 2010, inventory number; B10967, Portable single-phase safety and isolating transformer, manufacturer ismet Transformatoren, type; TG-S 630, year of construction 2010, single-phase safety transformer acc. to DIN EN 61558, VDE 0570, part 2-6, primary power cable, secondary CEE-socket outlet 4x, limited short-circuit proof, transformer in sheet steel housing, protection class IP 43, protection class II, 50/60 Hz, ta 40°C, special voltage; UPRI; 230 V 5 A, USEC; 24 V 26,2 A, total approx. 270 x 220 x 240 mm, weight approx. 15 kg, location; 01587 Riesa	5.00
224	1	safety transformer Ismet Transformatoren, TG-S 630, year built; 2010, inventory number; B10968, Portable single-phase safety and isolating transformer, manufacturer ismet Transformatoren, type; TG-S 630, year of construction 2010, single-phase safety transformer acc. to DIN EN 61558, VDE 0570, part 2-6, primary power cable, secondary CEE-socket outlet 4x, limited short-circuit proof, transformer in sheet steel housing, protection class IP 43, protection class II, 50/60 Hz, ta 40°C, special voltage; UPRI; 230 V 5 A, USEC; 24 V 26,2 A, total approx. 270 x 220 x 240 mm, weight approx. 15 kg, location; 01587 Riesa	5.00
225	1	safety transformer Erso- indulux, 500 VA KV-13, year built; 2009, inventory number; B10970, Portable safety transformer, input 230 V, output 2 CEE-sockets 24 V, solid rubber housing with additional fuse secondary side, total approx. 330 x 300 x 280 mm, weight approx. 10 kg, location; 01587 Riesa	5.00



Lot	Number	Description	Starting Bid €
226	1	Portable axial fan Red Star, 300, inventory number; B12026, for rapid ventilation and exhaust of rooms and halls, manufacturer; Red Star, type; 300 mm, 220 V; 50 Hz, operating power; 520 Watt, air delivery max. 4200 m³/h, speeds 2800/3400 rpm, pressure; 343/490 Pa, sound pressure max. 92 dB, diameter; 300 mm, location; 01587 Riesa	5.00
227	1	Portable axial fan Red Star, 300, inventory number; B12026, for rapid ventilation and exhaust of rooms and halls, manufacturer; Red Star, type; 300 mm, 220 V; 50 Hz, operating power; 520 Watt, air delivery max. 4200 m³/h, speeds 2800/3400 rpm, pressure; 343/490 Pa, sound pressure max. 92 dB, diameter; 300 mm, location; 01587 Riesa	5.00
228	1	Portable axial fan Red Star, 300, inventory number; B12026, for rapid ventilation and exhaust of rooms and halls, manufacturer; Red Star, type; 300 mm, 220 V; 50 Hz, operating power; 520 Watt, air delivery max. 4200 m³/h, speeds 2800/3400 rpm, pressure; 343/490 Pa, sound pressure max. 92 dB, diameter; 300 mm, location; 01587 Riesa	5.00
229	10	Plastic stacking crates inventory number; B12898, Size approx. 800 x 600 x 400 mm, useful size approx. 760 x 570 x 350 mm, useful volume approx. 150 litres, weight per box approx. 10 kg, colour; white or brown, 1 tarpaulin per box, location; 01587 Riesa	5.00
230	10	Plastic stacking crates inventory number; B12898, Size approx. 800 x 600 x 400 mm, useful size approx. 760 x 570 x 350 mm, useful volume approx. 150 litres, weight per box approx. 10 kg, colour; white or brown, 1 tarpaulin per box, location; 01587 Riesa	5.00
231	10	Plastic stacking crates inventory number; B12898, Size approx. 800 x 600 x 400 mm, useful size approx. 760 x 570 x 350 mm, useful volume approx. 150 litres, weight per box approx. 10 kg, colour; white or brown, 1 tarpaulin per box, location; 01587 Riesa	5.00
232	10	Plastic stacking crates inventory number; B12898, Size approx. 800 x 600 x 400 mm, useful size approx. 760 x 570 x 350 mm, useful volume approx. 150 litres, weight per box approx. 10 kg, colour; white or brown, 1 tarpaulin per box, location; 01587 Riesa	5.00
233	10	Plastic stacking crates inventory number; B12898, Size approx. 800 x 600 x 400 mm, useful size approx. 760 x 570 x 350 mm, useful volume approx. 150 litres, weight per box approx. 10 kg, colour; white or brown, 1 tarpaulin per box, location; 01587 Riesa	5.00
234	10	Plastic stacking crates inventory number; B12898, Size approx. 800 x 600 x 400 mm, useful size approx. 760 x 570 x 350 mm, useful volume approx. 150 litres, weight per box approx. 10 kg, colour; white or brown, 1 tarpaulin per box, location; 01587 Riesa	5.00
235	10	Plastic stacking crates inventory number; B12898, Size approx. 800 x 600 x 400 mm, useful size approx. 760 x 570 x 350 mm, useful volume approx. 150 litres, weight per box approx. 10 kg, colour; white or brown, 1 tarpaulin per box, location; 01587 Riesa	5.00
236	1	diaphragm pump DEPA Pumpen, DL40-FA, year built; 1974, inventory number; B13068, Pump type-DL Standard pump, pump size-40; 1-1/2", material combination housing / control sheet -FA; aluminium, diaphragms-N; nitrile, valve seat-N nitrile, valve balls-N; nitrile, size approx. 330 x 260 H 410 mm, location; 01587 Riesa	5.00
237	1	Collecting tray for hazardous materials Denios, Basis A, year built; 2001, inventory number; B13020, Material steel 1.0038, sump capacity 200 litres, load capacity; 850 kg/m² with evenly distributed load, use according to StawaR for 200 litre drums and small drums, version accessible under vehicle, integrated fork pockets for internal transport, removable hot-dip galvanised gratings as place level, size approx. 815 x 840 H 473 mm, location; 01587 Riesa	4.00



Lot	Number	Description	Starting Bid €
238	1	information stand inventory number; B13129 (A), 3-sided 360° rotatable display area approx. 330 x 1300 mm with 9 compartments each, stand / base size approx. 260 x 260 mm, total height approx. 2700 mm, location; 01587 Riesa	4.00
239	1	information stand inventory number; B13129 (B), 3-sided 360° rotatable display area approx. 330 x 1300 mm with 9 compartments each, stand / base size approx. 260 x 260 mm, total height approx. 2700 mm, location; 01587 Riesa	4.00
240	1	information stand inventory number; B13129 (C), 3-sided 360° rotatable display area approx. 330 x 1300 mm with 9 compartments each, stand / base size approx. 260 x 260 mm, total height approx. 2700 mm, location; 01587 Riesa	4.00
241	1	grinding wheel Tyrolit, F07043111, year built; 1997, inventory number; B10789, regulating wheel or dressing wheel, 500 x 28 x 202 mm, unused stock, dimensions; 500 x 28 x 202 mm, 50A602L6VIII, 797237 K1/1, maximum working speed 40 m/s, max. speed 1520 rpm, location; 01587 Riesa	3.00
242	1	grinding wheel Tyrolit, F07043111, year built; 1997, inventory number; B10789, regulating wheel or dressing wheel, 500 x 28 x 202 mm, unused stock, dimensions; 500 x 28 x 202 mm, 50A602L6VIII, 797237 K1/1, maximum working speed 40 m/s, max. speed 1520 rpm, location; 01587 Riesa	3.00
243	2	heavy-duty castors Vogel, inventory number; B12654, with pedestal bearing SN510, size approx. Ø 400/300 mm, width approx. 70 mm, pedestal bearing HFH SN510, hole spacing approx. 170 mm, weight per roll approx. 32 kg, location; 01587 Riesa	3.00
244	2	heavy-duty castors Vogel, inventory number; B12654, with pedestal bearing SN510, manufacturer Räder-Vogel, size approx. Ø 400/300 mm, width approx. 70 mm, pedestal bearing HFH SN510, hole spacing approx. 170 mm, weight per roll approx. 32 kg, location; 01587 Riesa	3.00
245	2	heavy-duty castors Vogel, inventory number; B12654, with pedestal bearing SN510, manufacturer Räder-Vogel, size approx. Ø 400/300 mm, width approx. 70 mm, pedestal bearing HFH SN510, hole spacing approx. 170 mm, weight per roll approx. 32 kg, location; 01587 Riesa	3.00
246	2	heavy-duty castors Vogel, inventory number; B12654, with pedestal bearing SN510, manufacturer Räder-Vogel, size approx. Ø 400/300 mm, width approx. 70 mm, pedestal bearing HFH SN510, hole spacing approx. 170 mm, weight per roll approx. 32 kg, location; 01587 Riesa	3.00
247	2	Double heavy-duty castors Continental, Elastic, inventory number; B12655, Size 415/90-305, base plate approx. 160 x 300 mm, hole spacing approx. 130 x 260 mm, total height approx. 500 mm, weight each approx. 46 kg, location; 01587 Riesa	3.00
248	2	Double heavy-duty castors Continental, Elastic, inventory number; B12655, Size 415/90-305, base plate approx. 160 x 300 mm, hole spacing approx. 130 x 260 mm, total height approx. 500 mm, weight each approx. 46 kg, location; 01587 Riesa	3.00
249	2	Double heavy-duty castors Continental, Elastic, inventory number; B12655, Size 415/90-305, base plate approx. 160 x 300 mm, hole spacing approx. 130 x 260 mm, total height approx. 500 mm, weight each approx. 46 kg, location; 01587 Riesa	3.00
250	2	Double heavy-duty castors Continental, Elastic, inventory number; B12655, Size 415/90-305, base plate approx. 160 x 300 mm, hole spacing approx. 130 x 260 mm, total height approx. 500 mm, weight each approx. 46 kg, location; 01587 Riesa	3.00



Lot	Number	Description	Starting Bid €
251	1	cap valve ARI Armaturen, DN100, inventory number; B11942fej, Flanged shut-off valve, ARI-EURO-WEDI, straight-way form with flange and soft seal as cap valve (cast iron), maintenance-free shut-off valve, soft-sealing (up to 120 °C), manufacturer ARI valves, pressure PN 16, size DN 100, figure no. 12.072, material; EN-JL1040, overall length; FTF-14 (190 mm), temperature; -10°C to +120°C (short-term up to +130°C), weight approx. 24.5 kg, unused stock items, location; 01587 Riesa	2.00
252	1	cap valve ARI Armaturen, DN20, inventory number; B11943fej, Flanged shut-off valve, straight-way form with flange and soft seal as cap valve (cast iron), maintenance-free shut-off valve, soft-sealing (up to 120 °C), manufacturer ARI Armaturen, pressure PN 16, size DN 20, figure no. 12.072, material; EN-JL1040, overall length; FTF-14 (190 mm), temperature; -10°C to +120°C (short-term up to +130°C), weight approx. 3.8 kg, unused stock items, location; 01587 Riesa	2.00
253	1	grinding wheel Elsass Schleifmittel Bochum, F070311981, year built; 1991, inventory number; B10780, regulating wheel or dressing wheel, 345 x 50 x 76 mm, unused stock, art. no.; 10160001, dimensions; 345 x 50 x 76 mm, 11A 30/3 0/P6 V110, working speed 30/35 m/s, location; 01587 Riesa	1.00
254	1	grinding wheel Elsass Schleifmittel Bochum, F070311981, year built; 1991, inventory number; B10780, regulating wheel or dressing wheel, 345 x 50 x 76 mm, unused stock, 10160001, dimension; 345 x 50 x 76 mm, 11A 30/3 0/P6 V110, working speed 30/35 m/s, location; 01587 Riesa	1.00
255	1	grinding wheel Elsass Schleifmittel Bochum, F070311981, year built; 1991, inventory number; B10780, regulating wheel or dressing wheel, 345 x 50 x 76 mm, unused stock, art. no.; 10160001, dimensions; 345 x 50 x 76 mm, 11A 30/3 0/P6 V110, working speed 30/35 m/s, location; 01587 Riesa	1.00
256	1	grinding wheel Elsass Schleifmittel Bochum, F070311981, year built; 1991, inventory number; B10780, regulating wheel or dressing wheel, 345 x 50 x 76 mm, unused stock, art. no.; 10160001, dimensions; 345 x 50 x 76 mm, 11A 30/3 0/P6 V110, working speed 30/35 m/s, location; 01587 Riesa	1.00
257	1	eroding machine Nassovia, FE 501, year built; 1978, inventory number; B11584, Model no. 6 550 9107, operating voltage 3~ 380 V; 50 Hz, control voltage 220 V, table approx. 486 x 280 mm, travels X/Y 300/200 mm, control Krupp type E52-10, wiring diagram no.; E52-10-1000, scope of delivery; eroding machine, switch/control cabinet, hydraulic unit, location; 01587 Riesa	100.00
258	1	cylindrical grinding machine Kellenberger, year built; 1975, inventory number; B13558, Precision cylindrical grinding machine with stepping motor feed system, centre distance 1500 mm, centre height 150 mm, grinding diameter max. 250 mm, working surface of the table; 2060x140 mm, weight of the machine gross 3250 kg, location; 01587 Riesa	200.00
259	1	Boiler with Riello burner Buderus, GE515-260/8, inventory number; B13208-1, Heating system, forced draught gas burner Riello Burners, Riello RS-38/M type 825 T1, GAS - KAASU FAM.2, 13-200 mbar, heating capacity 70-440 kW, gas/oil low-temperature boiler/cast iron boiler, Buderus Logano GE515-260/8, LxWxH; 1750x980x1556 mm / weight approx. 1430 kg, with condensing boiler control system, Buderus Logamatic 4212, total approx. 2400 x 1050 H 1600 mm, total weight approx. 1550 kg, location; 01587 Riesa	300.00



Lot	Number	Description	Starting Bid €
260	1	Boiler with Riello burner Buderus, GE515-260/8, inventory number; B13208-2, Heating system, forced draught gas burner Riello Burners, Riello RS-38/M type 825 T1, GAS - KAASU FAM.2, 13-200 mbar, heating capacity 70-440 kW, gas/oil low-temperature boiler/cast iron boiler, Buderus Logano GE515-260/8, LxWxH; 1750x980x1556 mm / weight approx. 1430 kg, with condensing boiler control system, Buderus Logamatic 4212, total approx. 2400 x 1050 H 1600 mm, total weight approx. 1550 kg, location; 01587 Riesa	300.00
261	1	strapping machine Pro-System Verpackungstechnik, TP-601B, year built; 2011, inventory number; B13006, No. 110111861, 400 V; 4 A; 50 Hz, belt width 12 mm, belt tension 7-70 kg, belt thicknesses 0.63-0.75 mm, strapping up to 18 per minute, frame dimensions b- 850 / h-600, table length approx. 700 mm, with integrated photocells (Omron E3JK-R2M2) for fully automatic operation, size approx. 1650 x 750 H 1550 mm, weight approx. 325 kg, location; 01587 Riesa	80.00
262	1	strapping machine Pro-System Verpackungstechnik, TP-601B, year built; 2011, inventory number; B13007, No. 110111861, 400 V; 4 A; 50 Hz, belt width 12 mm, belt tension 7-70 kg, belt thicknesses 0.63-0.75 mm, strapping up to 18 per minute, frame dimensions b- 850 / h-600, table length approx. 700 mm, with integrated photocells (Omron E3JK-R2M2) for fully automatic operation, size approx. 1650 x 750 H 1550 mm, weight approx. 325 kg, location; 01587 Riesa	80.00
263	1	Electric asynchronous motor 300 kW Siemens, Typ 1PL6 288, year built; 2011, inventory number; B12616, Air-cooled, Type 1PL6 288-0HC000AA9-Z, Type B3, Power 300 kW, Frequency Hz= 27, Speed 800 rpm - 3300 rpm, Shafts approx. Ø 95 mm, Total approx. 1600 x 800 H 1100 mm, Weight; 1745 kg, location; 01587 Riesa	450.00
264	1	pallet rack VoestAlpine Krems Finaltechnik GmbH, year built; 1994, inventory number; B13661-1, 54 m long pallet high rack consisting of 19 rack stands (2x height 10 m and 17 x height 9.55 m), stand width 0.80 m, 180 cross beams width 2.90 m, 360 locking pins, 360 galvanised deep webs with push-through protection, load capacities bay load 5,000 kg, shelf load 500 kg,, location; 01587 Riesa	550.00
265	1	pallet rack VoestAlpine Krems Finaltechnik GmbH, year built; 1994, inventory number; B13661-2, High-rise pallet rack consisting of 19 galvanised rack stands (2x height 10 m and 17 x height 9.55 m), stand width 0.80 m, 180 painted traverses, width 2.90 m, 360 locking pins, 360 galvanised deep webs with push-through protection, load capacities bay load 5,000 kg, shelf load 500 kg, total length 54 m, location; 01587 Riesa	550.00
266	1	pallet rack VoestAlpine Krems Finaltechnik GmbH, year built; 1994, inventory number; B13661-3, High-rise pallet rack consisting of 19 galvanised rack stands (2x height 10 m and 17 x height 9.55 m), stand width 0.80 m, 180 painted traverses, width 2.90 m, 360 locking pins, 360 galvanised deep webs with push-through protection, load capacities bay load 5,000 kg, shelf load 500 kg, total length 54 m, location; 01587 Riesa	550.00
267	1	pallet rack VoestAlpine Krems Finaltechnik GmbH, year built; 1994, inventory number; B13661-4, High-rise pallet rack consisting of 19 galvanised rack stands (2x height 10 m and 17 x height 9.55 m), stand width 0.80 m, 180 painted traverses, width 2.90 m, 360 locking pins, 360 galvanised deep webs with push-through protection, load capacities bay load 5,000 kg, shelf load 500 kg, total length 54 m, location; 01587 Riesa	550.00



Lot	Number	Description	Starting Bid €
268	1	pallet rack VoestAlpine Krems Finaltechnik GmbH, year built; 1994, inventory number; B13661-5, High-rise pallet rack consisting of 19 galvanised rack stands (2x height 10 m and 17 x height 9.55 m), stand width 0.80 m, 180 painted traverses, width 2.90 m, 360 locking pins, 360 galvanised deep webs with push-through protection, load capacities bay load 5,000 kg, shelf load 500 kg, total length 54 m, location; 01587 Riesa	550.00
269	1	pallet rack VoestAlpine Krems Finaltechnik GmbH, year built; 1994, inventory number; B13661-6, High-rise pallet rack consisting of 19 galvanised rack stands (2x height 10 m and 17 x height 9.55 m), stand width 0.80 m, 180 painted traverses, width 2.90 m, 360 locking pins, 360 galvanised deep webs with push-through protection, load capacities bay load 5,000 kg, shelf load 500 kg, total length 54 m, location; 01587 Riesa	550.00
270	1	pallet rack VoestAlpine Krems Finaltechnik GmbH, year built; 1994, inventory number; B13661-7, High-rise pallet rack consisting of 19 galvanised rack stands (2x height 10 m and 17 x height 9.55 m), stand width 0.80 m, 180 painted traverses, width 2.90 m, 360 locking pins, 360 galvanised deep webs with push-through protection, load capacities bay load 5,000 kg, shelf load 500 kg, total length 54 m, location; 01587 Riesa	550.00
271	1	pallet rack VoestAlpine Krems Finaltechnik GmbH, year built; 1994, inventory number; B13661-8, High-rise pallet rack consisting of 19 galvanised rack stands (2x height 10 m and 17 x height 9.55 m), stand width 0.80 m, 180 painted traverses, width 2.90 m, 360 locking pins, 360 galvanised deep webs with push-through protection, load capacities bay load 5,000 kg, shelf load 500 kg, total length 54 m, location; 01587 Riesa	550.00
272	1	pallet rack VoestAlpine Krems Finaltechnik GmbH, year built; 1994, inventory number; B13661-9, High-rise pallet rack consisting of 19 galvanised rack stands (2x height 10 m and 17 x height 9.55 m), stand width 0.80 m, 180 painted traverses, width 2.90 m, 360 locking pins, 360 galvanised deep webs with push-through protection, load capacities bay load 5,000 kg, shelf load 500 kg, total length 54 m, location; 01587 Riesa	550.00
273	1	pallet rack VoestAlpine Krems Finaltechnik GmbH, year built; 1994, inventory number; B13661-10, High-rise pallet rack consisting of 19 galvanised rack stands (2x height 10 m and 17 x height 9.55 m), stand width 0.80 m, 180 painted traverses, width 2.90 m, 360 locking pins, 360 galvanised deep webs with push-through protection, load capacities bay load 5,000 kg, shelf load 500 kg, total length 54 m, location; 01587 Riesa	550.00
274	1	lifting platform Begemanns, BS90EA12, inventory number; K109001, Aerial work platform for indoor areas as spare parts dispenser or for hobbyists for reconstruction, working height 11.00 m, platform height 9.00 m, platform size 3.06x1.20 m, platform extension 1.00 m, machine dimensions 3.06x1.20 m, overall height 2.46 m, load 450 kg, dead weight 2,500 kg, type of drive battery (not available), The aerial work platform is not ready for use and is offered as shown in the picture, location; 01587 Riesa	80.00
275	1	lifting platform Begemanns, BS90EA12, inventory number; K109006, Aerial work platform for indoor areas as spare parts dispenser or for hobbyists for reconstruction, working height 11.00 m, platform height 9.00 m, platform size 3.06x1.20 m, platform extension 1.00 m, machine dimensions 3.06x1.20 m, overall height 2.46 m, load 450 kg, dead weight 2,500 kg, type of drive battery (not available), The aerial work platform is not ready for use and is offered as shown in the picture, location; 01587 Riesa	80.00



Lot	Number Description	Starting Bid €
276	1 lifting platform Begemanns, BS90EA12, inventory number; K109035, Aerial work platform for indoor areas as spare parts dispenser or for hobbyists for reconstruction, working height 11.00 m, platform height 9.00 m, platform size 3.06x1.20 m, platform extension 1.00 m, machine dimensions 3.06x1.20 m, overall height 2.46 m, load 450 kg, dead weight 2,500 kg, type of drive battery (not available), The aerial work platform is not ready for use and is offered as shown in the picture, location; 01587 Riesa	80.00
277	1 lifting platform Begemanns, BS90EA12, inventory number; K109037, Aerial work platform for indoor areas as spare parts dispenser or for hobbyists for reconstruction, working height 11.00 m, platform height 9.00 m, platform size 3.06x1.20 m, platform extension 1.00 m, machine dimensions 3.06x1.20 m, overall height 2.46 m, load 450 kg, dead weight 2,500 kg, type of drive battery (not available), The aerial work platform is not ready for use and is offered as shown in the picture, location; 01587 Riesa	80.00
278	1 lifting platform Begemanns, BS90EA12, inventory number; K109039, Aerial work platform for indoor areas as spare parts dispenser or for hobbyists for reconstruction, working height 11.00 m, platform height 9.00 m, platform size 3.06x1.20 m, platform extension 1.00 m, machine dimensions 3.06x1.20 m, overall height 2.46 m, load 450 kg, dead weight 2,500 kg, type of drive battery (not available), The aerial work platform is not ready for use and is offered as shown in the picture, location; 01587 Riesa	80.00
279	1 lifting platform Begemanns, BS90EA12, inventory number; K109040, Aerial work platform for indoor areas as spare parts dispenser or for hobbyists for reconstruction, working height 11.00 m, platform height 9.00 m, platform size 3.06x1.20 m, platform extension 1.00 m, machine dimensions 3.06x1.20 m, overall height 2.46 m, load 450 kg, dead weight 2,500 kg, type of drive battery (not available), The aerial work platform is not ready for use and is offered as shown in the picture, location; 01587 Riesa	80.00



TROOSTWIJK
INDUSTRIAL AUCTIONEERS & VALUERS SINCE 1930

General conditions Online Auction TroostwijkAuctions.com

GENERAL TERMS AND CONDITIONS

for Online Auctions

of the company Troostwijk Auktionen GmbH & Co. KG (Germany)

Article 1. Definitions

General User

Conditions: The General Terms and Conditions of Business governing the use of the
Troostwijk Veilingen B.V. website

General Terms and

Conditions of

Online Auctions: These General Terms and Conditions for an online auction governing the procedure for the online auction and defining the position, rights and duties of the contracting parties / participants.

User: Anyone who registers on the Troostwijk Veilingen B.V. website

User agreement: Agreement between Troostwijk Veilingen B.V. and the user

Bidder: Anyone who bids in an online auction

Bid: A binding amount bid by the user in an auction for a lot

Purchase price: Made up of the highest bid at the end of the auction, the commission and any VAT due.

Purchase contract: Agreement between the buyer and seller, which comes into being upon acceptance of a bid by Troostwijk

Buyer: Bidder whose bid is accepted for the lot

Lot: (An) item(s) auctioned (also items auctioned collectively under one number)

(Online) auction: The auctioning of movable property organised by Troostwijk on the Troostwijk Veilingen B.V. website

Registration: Registration of the user on the Troostwijk Veilingen B.V. website by completing the registration form on the website

Special Terms and

Conditions of an

Online Auction: Special additional conditions only applying for the respective online auction

Troostwijk: Troostwijk Auktionen GmbH & Co. KG

Seller: The party on behalf of which a lot is auctioned

Website: The www.TroostwijkAuctions.com website, which is maintained by Troostwijk Veilingen B.V. in Amsterdam and which serves as the platform for auctions held by Troostwijk

Bid acceptance: Confirmation by Troostwijk that the highest bidder's bid for a lot or a combination of lots is accepted upon payment of the purchase price

Article 2. General Terms and Conditions of Business

2.1 Troostwijk auctions take place on the website of Troostwijk Veilingen B.V., which provides the platform for auctions. The user shall use the website in accordance with the *General User Conditions* of Troostwijk Veilingen B.V.

2.2 The General Terms and Conditions of Online Auctions contain the general regulations for the auction. The auction takes place exclusively on the basis of these conditions. Participation in the auctions constitutes acceptance of these conditions. Special Terms and Conditions of an Online Auction may also apply to an auction. These contain additions or variations to the General Terms and Conditions of Online Auctions. In case of

www.TroostwijkAuctions.com



doubt, the Special Terms and Conditions of the Online Auction take precedence. These General Terms and Conditions solely apply to Online Auctions and not to sales outside of the Online Auction. You can find the General Terms and Conditions for Post Auction Sales, Private Treaty Sales and Tender Sales on page 5.

2.3 Troostwijk can make changes to these General Terms and Conditions. Changes take effect upon receipt of respective notification by the user and bidder.

Article 3. Registration

3.1 Bidders who are registered users with Troostwijk Veilingen B.V. and who have accepted its *General User Conditions* can take part in auctions.

3.2 A bid can be made by anyone who has accepted the *General Terms and Conditions of Online Auctions* and the *Special Terms and Conditions of an Online Auction* for an auction.

Article 4. Auction

4.1 Auctions are held on behalf of and for the account of the *seller*. *Troostwijk* is not a contracting party to any purchase contract which comes into being upon acceptance of the bid; it only brokers the purchase contract.

4.2 Dates, such as the start and the end of an auction, are contained in the Special Terms and Conditions of an Online Auction.

4.3 *Troostwijk* is responsible for organising, preparing and holding the auction.

4.4 *Troostwijk* may choose:

- not to accept a *bid* generally or – for important cause – from certain *bidders*;
- to exclude *bidders* from an auction;
- to correct errors made by *Troostwijk* in bids and/or *accepted bids* with appropriate notification to the *bidder*;
- to take any other measures required;

4.5 *Troostwijk's* decision as regards what happens during the auction is binding.

4.6 Forced sales are marked as such in the Special Terms and Conditions of the Online Auction.

Article 5. Cancellation, technical faults

5.1 *Troostwijk* reserves the right to cancel, prematurely end or extend an auction **for important cause**. In the event of a technical fault to the *website* which results in it being not fully accessible and/or not accessible to all *users*, *Troostwijk* can extend the auction by up to 24 hours. *Troostwijk* can reject bids without stating the reasons.

5.2 By registering, the *user* declares that he is aware of the special circumstances of an internet auction. In particular he is aware that the current state of technology can result in faults and downtime, which can make access to the internet auction and the *website* difficult or impossible.

5.3 *Troostwijk* is only responsible for properly conducting the auction on the www.TroostwijkAuctions.com website, not for any technical faults. *Troostwijk's* liability is limited and is based on the General Provisions, as set out in Article 15.

Article 6. Viewing days; entering buildings & property

6.1 Any viewing dates are specified in the *Special Terms and Conditions of the Online Auction*.

6.2 Viewers enter buildings and property at their own risk. Viewers must follow the instructions issued by *Troostwijk* or its appointees. The seller accepts no liability whatsoever for damages resulting from entering the buildings and property. In addition, the liability limitations of the General Provisions for *Troostwijk* and the seller, as set out in Article 15, apply.

Article 7. Lots



7.1 Individual *lots* or *combinations* are auctioned.

7.2 *Combinations*, i.e. the auctioning of several *lots* together, are displayed in the system. *Combination lots* are auctioned in two stages:

a) Firstly the individual *lots* are auctioned. The *bid is accepted* under the condition precedent that the *lot* is not knocked down as part of a *combination lot*. Once the *bids* for the individual *lots* have been *accepted*, bids can be made on the combination. If no bids are made on the combination, the sale of the individual *lots* goes ahead.

b) If bids are made on the combination, the following applies: The *bid is accepted* for the combination if the highest bid is higher than the total bids resp. the start prices for the individual *lots*. The *bids* for the individual *lots* are then declined because the condition has not been fulfilled.

7.3 *Troostwijk* can combine various items to form *lots*, divide lots and remove lots from the auction.

7.4 *Troostwijk* can demand that a *bidder* provides standard banking security in advance for certain lots.

Article 8. Bids

8.1 A *bidder* can bid in auctions as soon as he has registered on the *Troostwijk* website and has activated his account by clicking the link in the email that he received after registration. *Bidders* can bid on one or more lots. Bids can only be made without conditions and reservations attached. Bids are binding, revocation is not possible. The bidder shall receive email confirmation of every bid made and every higher bid by a third party. This notification is not acceptance of the bid.

8.2 Bids can be made as firm bids or maximum bids.

a) In the case of a firm bid (static), the user offers a fixed amount for each lot which is displayed in the system.

b) In the case of a maximum bid (proxy), the user states the maximum price he is prepared to pay for a lot. The maximum bid is not shown in the system. If a third party outbids the user, the current bid is increased in increments until a third party outbids the maximum bid. A maximum bid can only be retracted by the user in the interim if he makes a firm bid which is the highest bid at that moment.

8.3 Bids do not yet include sales tax and the commission. The amount of the commission can be found in the *Special Terms and Conditions of the Online Auction*.

8.4 *Troostwijk* and/or the seller can reject bids without stating the reasons. *Troostwijk* can bid on behalf of third parties.

Article 9. Acceptance of bid & purchase contract

9.1 A purchase contract for one or more lots only comes into being when the bid has been accepted. The *buyer* is informed by email of the resulting purchase contract (acceptance of bid). A *bid is accepted* within two working days of the close of the auction at the latest.

9.2 Consumers have no right of revocation as per § 312 d BGB [*German Civil Code*], as the purchase contract comes into being in the context of an auction as per § 156 BGB [*German Civil Code*] (§ 312 d Para. 5 No. 5 BGB [*German Civil Code*]).

9.3 *Troostwijk* is entitled not to *accept a bid* or to accept a bid under conditions precedent.

9.4 As a general rule, the *user* with the highest bid is *awarded the bid*. The *bid is accepted* if no further bids are made 10 minutes before the end of the auction. Otherwise the closing time for this lot is postponed for further 5 minutes. If another bid is made, the auction ends when the highest bid is made, if this is not outbid within five minutes.

Article 10. Passage of risk / passage of title

10.1 When a bid is accepted, the risk of accidental perishing or loss of the auctioned goods and the risk of loss or damage through fire, theft or burglary passes to the successful bidder.

10.2 Ownership only passes to the buyer on full payment.

Article 11. Obligations of the buyer

11.1 When a bid is accepted, the buyer is obliged to pay the purchase price plus statutory sales tax and the commission and to collect the *lot*.



11.2 Payment must be made to the account specified by *Troostwijk* in the stipulated currency within 48 hours (2 working days) of acceptance of the bid.

11.3 Statutory default interest shall be charged if payment is delayed. The rights of the seller are based on the statutory provisions. As it is a fixed date transaction, no notice is required for default, § 286 II BGB [German Civil Code].

11.4 If the buyer fails to fulfil an obligation, in particular:

(i) does not pay the purchase price on time or in full

(ii) does not collect the *lots* on time, and/or

(iii) does not provide the information required for delivery, this shall automatically constitute default without further notice of default being required. *Troostwijk* can then cancel the purchase contract on behalf of the seller. In such cases, *Troostwijk* can assign *lots* to another *bidder*, without *Troostwijk* and/or the seller being liable for damages.

11.5 In the event of a cancellation, the buyer is liable to pay compensation for any resulting damages.

Article 12. Collection

12.1 The buyer may only and must collect the goods at the times specified in the *Special Terms and Conditions of the Online Auction*. *Troostwijk* can, for technical reasons, specify that a certain *lot* can only be collected once other *lots* have been delivered.

12.2 The *buyer*, whose *lot(s)* is/are preventing the collection of other *lots*, must ensure that said *lots* are collected immediately following an email and/or a letter from *Troostwijk* to the address specified by the buyer. If this does not happen, *Troostwijk* can arrange for the *lot(s)* to be collected and possibly stored by a third party at the expense and risk of the buyer.

12.3 The *buyer* is obliged to carefully dismantle and collect his *lots*. He shall be liable for any damages caused to the property of others in this respect. Further, he is obliged to protect *Troostwijk* and the seller from all claims by third parties arising from the dismantling and/or collection.

12.4 The *buyer* is obliged to follow the instructions of *Troostwijk* and/or *Troostwijk's* appointees when dismantling and collecting his *lots*.

12.5 The *buyer* must ensure that he or the person dismantling or transporting the *lots* on his behalf has the required permits. *Troostwijk* and/or the seller cannot be held liable if the required permits are missing and/or official regulations are not observed when the *lot(s)* are being dismantled and/or transported by or for the buyer.

12.6 In situations where it is necessary to pull down (parts) of a building to remove the allocated *lots*, prior consultation and written consent must be sought from *Troostwijk* and the conditions imposed by *Troostwijk* at the time of bid acceptance must be observed.

12.7 *Troostwijk* reserves the right to make the collection of *lots* conditional upon payment of a deposit for any damages. *Troostwijk* shall notify the buyer of the *lots* concerned and the amount of the deposit. The deposit shall be reimbursed to the buyer following damage-free collection.

12.8 *Troostwijk* reserves the right that the dismantling of the buyer's goods has to be done compulsorily by a specific company. In such case, *Troostwijk* will announce this in the auction catalogue. The buyer has to bear the cost of such services. In some cases, the cost will be specified in the auction catalogue.

Article 13. Liability / Troostwijk warranty

Troostwijk only accepts liability for preparing and holding the auction in accordance with the legal regulations.

The following also applies:

13.1 Claims by the *seller* as well as by the *bidder* or the *buyer* on the grounds of breach of duty are excluded, in particular as regards advice in valuation matters or defects in the items.

13.2 The descriptions of the items by *Troostwijk*, e.g. in the sales catalogue or in a list, are based on information from the seller. *Troostwijk* is only liable for conveying the information appropriately, not for the objective accuracy of this information.

13.3 Information provided by *Troostwijk* serves only to help differentiate between products and in no way constitutes a warranty as per § 444 BGB [German Civil Code] or a quality agreement as per § 434 Para. 1 Clause 1 BGB [German Civil Code] for the items on sale.

13.4 The items are used. *Troostwijk* does not sell on its own behalf and thus accepts no warranty for material defects or defects of title and is not liable for the quantity, quality, dimensions, years of construction or completeness.



13.5 The above limitations do not apply if *Troostwijk* acts with deliberate or gross negligence, breaches a fundamental contractual obligation or Liability on account of culpable injury to life, limb or health.

Article 14. Liability / seller warranty

The seller is liable towards the buyer for defects in the items in accordance with the following provisions:

14.1 The *buyer* has had the opportunity to view the items in advance. The items are sold as seen and to the exclusion of any warranty for material defects and defects of title. The items were sold in particular without any guarantee for visible or hidden defects or warranty in respect of completeness, quantity, effect, usability, saleability, the existence or absence of rights or claims by third parties and/or the transfer option to third parties.

14.2 The *seller* accepts no liability for a certain quality or a normal use of the items.

14.3 The *seller* accepts no liability for advertising messages by the manufacturer.

14.4 The above limitations do not apply if the seller acts with deliberate or gross negligence, breaches a fundamental contractual obligation, Liability on account of culpable injury to life, limb or health or mandatory liability according to the German Product Liability Act.

14.5 The legal regulations on warranty rights for consumers as per BGB [*German Civil Code*] apply. The limitation period is shortened to one year.

Article 15. Limitation of liability of Troostwijk / seller

15.1 The limitation of liability applies to Troostwijk and the seller, as well as their legal representatives, managerial employees and any vicarious agents.

15.2 Liability is only accepted in the case of intent or gross negligence.

15.3 Liability for consequential damages, in particular lost profit, is only accepted in the case of intent or gross negligence.

15.4 Liability is limited to the amount of damages typically foreseeable when the contract is concluded, provided there is no intent or gross negligence.

15.5 The above limitations do not apply if a legally fundamental obligation is breached, if an express warranty is accepted or for damages arising from physical injury, harm to health and binding legal regulations.

Article 16. Severability clause / written form

16.1 Should any of the provisions of this agreement be or become wholly or partly ineffective, null and void or unenforceable, this shall not affect the validity of the other provisions of the contract as a whole. The ineffective, null and void or unenforceable provision shall be replaced by the effective and enforceable provision which corresponds most closely to the parties' economic objectives originally intended by the ineffective, null and void or unenforceable provision.

16.2 Amendments to and variations of these *General Terms and Conditions of Online Auctions* are only valid on the basis of written agreement between the parties.

Article 17. Applicable law / place of jurisdiction

17.1 This contract and the resulting obligations are subject to German law. The UN Convention on Contracts for the International Sale of Goods shall not apply.

17.2 All disputes arising in respect of the legal relations with Troostwijk fall under the exclusive jurisdiction of the Cologne local or district court. The General Provisions apply to disputes with the seller.

17.3 Troostwijk collects and processes personal data of Users, Sellers and Purchasers in accordance with the Privacy Statement on its Website, The General Data Protection Regulation and other applicable laws and regulations. Any person other than Troostwijk is not allowed to use these personal data for its own commercial purposes.



GENERAL TERMS AND CONDITIONS

for Post Auction Sales, Private Treaty Sales and Tender Sales

of the company Troostwijk Auktionen GmbH & Co. KG (Germany)

Article 1. General

1.1 Troostwijk sells the used items in the name of and for the account of the seller and receives commission for this from the buyer.

Article 2. Conclusion of the contract

2.1 The purchase price and the commission shall be paid within a period of 48 hours (sale at a fixed point in time), unless otherwise agreed. This time period commences at the latest when the invoice is received, including in electronic format. Payment is to be made exclusively to the named account.

2.2 If payment is not made on time - the time of receipt is decisive - Troostwijk is entitled and empowered to withdraw from the contract in order to ensure the on-time removal of the object sold from the respective location. An additional notice period is not required for the withdrawal but may be given. Troostwijk is entitled on withdrawal to assert claims for damages for non-fulfilment for the seller or themselves.

2.3 Title only transfers to the buyer when payment has been received in full.

2.4 Generally items are to be collected by the buyer from the location specified.

2.5 The risk of accidental deterioration or destruction of the item shall transfer to the buyer on conclusion of the contract.

Article 3. Warranty

3.1 Troostwijk does not carry out sales in their own name and therefore undertakes no guarantee for material defects and defects of title, and is not liable for quantities, quality, dimensions, year of construction and completeness.

3.2 The descriptions of objects by Troostwijk e.g. in the sales catalogue or listing are based on information from the seller. Troostwijk is therefore only liable for accurately providing this information as provided by the seller, not for the objective correctness of this information.

3.3 Information from Troostwijk is merely provided for distinctiveness and in no way forms a guarantee as per § 444 BGB (German Civil Code) or agreed characteristics as per § 434 para. 1 sentence 1 BGB for the object of purchase.

3.4 The sale of items by Troostwijk on behalf of the seller is carried out excluding any warranty for material defects and defects of title.

3.5 Sales are made in particular without the assumption of any liability with regard to obvious or hidden defects or warranty in connection with completeness, quantity, properties, usability, saleability, presence or absence of third party rights and/or the possibility of transfer to third parties.

3.6 The seller excludes liability for particular characteristics or general application of the objects.

3.7 The seller excludes all liability regarding advertising claims of the manufacturer.

3.8 The above restrictions in sections 7 & 8 do not apply if Troostwijk or the seller acts intentionally or with gross negligence, infringes a fundamental contractual obligation or if bodily injury occurs.

3.9 For consumers the statutory provisions in the BGB regarding rights in the event of defects apply. The limitation period is restricted to 1 year.

Article 4. Miscellaneous

4.1 Should individual provisions of the contract including these General Terms and Conditions be or become invalid, in whole or in part, or should the contract contain a gap or omission this shall not affect the validity of the remaining provisions or parts thereof.

4.2 This contract and the entire legal relationship between the parties is subject to the law of the Federal Republic of Germany excluding the UN



Convention on the International Sale of Goods.

4.3 Cologne shall have jurisdiction for all disputes arising in connection with the sale.

Did you know?

- we organise auctions in **25 countries**
- we have **1,6 million** page views on a top day

The European Online Auctioneer and Valuer

1300 Auctions

Troostwijk conducts
annually **1300** auction sales
all over Europe

Statistics

- Every year we deal with **50.000** bidders
- from 95 different countries
- over 500.000 registrations

15 Countries

Troostwijk has
own offices
in 15 European countries

85 Years

Troostwijk is conducting
auctions since 1930 and
has 85 years of experience