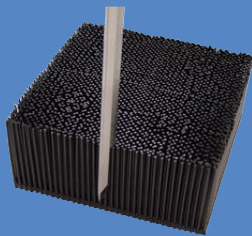


# GERBERcutters

## GT3250, GT5250 and GT7250

for Apparel, Transportation Interiors, Upholstered Furniture, Industrial Fabrics and Composites.

The GT-series of GERBERcutters are multi-ply conveyorized systems capable of cutting up to 7.2 cm (2.8 in) of compressed fabric, using Gerber's state-of-the-art reciprocating knife technology. They automatically convey material from a spreading table or single-ply roll feeder to the cutting area and then directly onto the bundling area.



Long-lasting GERBER BRISTLE SQUARE® cutting surface allows knife blade to penetrate without damage



Graphical user interface simplifies operator training and daily use



### Get the most from your cutting system.

#### Get accurately cut parts every time.

- The GT-series of cutters employ up to six separate vacuum zones to hold material firmly in place during the cutting process.
- Long vertical knife strokes and automatic knife re-sharpening eliminate hanging threads ensuring quality cut parts from top to bottom ply.

#### Maximize throughput.

- Automatic SMARTbite™ calculator analyzes each marker to determine the maximum number of pieces to be cut with a minimum number of material advances to maximize cutter throughput.
- Operators can easily adjust cut speed and knife speed according to the type of material being cut to maximize throughput.
- Import and optimize data, and create markers directly from most standard data formats, including Gerber's AccuMark® system.

#### Easy to operate.

- Continuous, real-time, graphical display of operating parameters, vacuum level and cut speed provides a comprehensive overview of the entire cutting process.
- User screen displays cut job, including the sequence of cut pieces, for verification; displays cutting progress.
- Easily retrieve cutting setup files for quick retrieval to accelerate future cut jobs.

#### Realize a fast return on your investment.

- Cutter information database (CIDB) generates a report upon request that provides critical information concerning time management. Reports specify information by shift including how long the cutter was in operation, total perimeter of parts cut and much more.

# GT-series

## Available Options & Services

- Lateral travel kit enables cutter to move between multiple spreading tables
- Zone vacuum regulator
- Integrated vacuum resealer
- Complete service and parts supply packages
- Comprehensive operator and technician training



Fabric Drill - up to 9.5 mm (3/8 in) diameter



Automatic (unattended) bristle cleaning system



Barcode reader



GERBERSpreader™ tension-free material spreading system

NOTE: Configurations vary according to options selected. Specifications are subject to change without notice.

GERBERSpreader™ and SMARTbite™ are trademarks of Gerber Technology.

GERBERcutter®, AccuMark® and GERBER BRISTLE SQUARE® are registered trademarks of Gerber Technology.

GERBERcutter® products are patent protected.

## Technical Specifications

### Characteristics

<b>Fabric height (compressed)</b>		
GT3250	3,2 cm	1.25 in
GT5250	5,2 cm	2.0 in
GT7250	7,2 cm	2.8 in
<b>Cutting speed (maximum)</b>		
GT3250	46 m/min	1800 in/min
GT5250 / GT7250	30,5 m/min	1200 in/min
<b>Throughput - average (depending on application)</b>		
GT3250 / GT5250	9,5 m/min	375 in/min
GT7250	8,3 m/min	325 in/min
<b>Head acceleration (maximum)</b>		
GT3250	3,7 m/s <sup>2</sup>	3/8 g
GT5250 / GT7250	2,4 m/s <sup>2</sup>	1/4 g
<b>Cutting Widths</b>		
GT3250	1,7; 2; 2,4 m	67, 79, 94.5 in
GT5250 / GT7250	1,7; 2; 2,4 m	67, 79, 94.5 in
<b>Table weight</b>		
GT3250	2275 kg	5,000 lbs
GT5250 / GT7250	2318 kg	5,100 lbs
<b>Table heights (all models)</b>	75, 80, 86, 91cm	29.5, 31.5, 34, 36 in

### Electrical

Control Power	3-wire 220V, single phase, 50/60 Hz, 30 A
<b>Table Vacuum</b>	
• 50 Hz vacuum blower (3 phase)	200V at 108 A, 220V at 96 A, 380V at 55 A
• 60 Hz vacuum blower (3 phase)	240V at 88 A, 480V at 44 A, 575V at 37 A

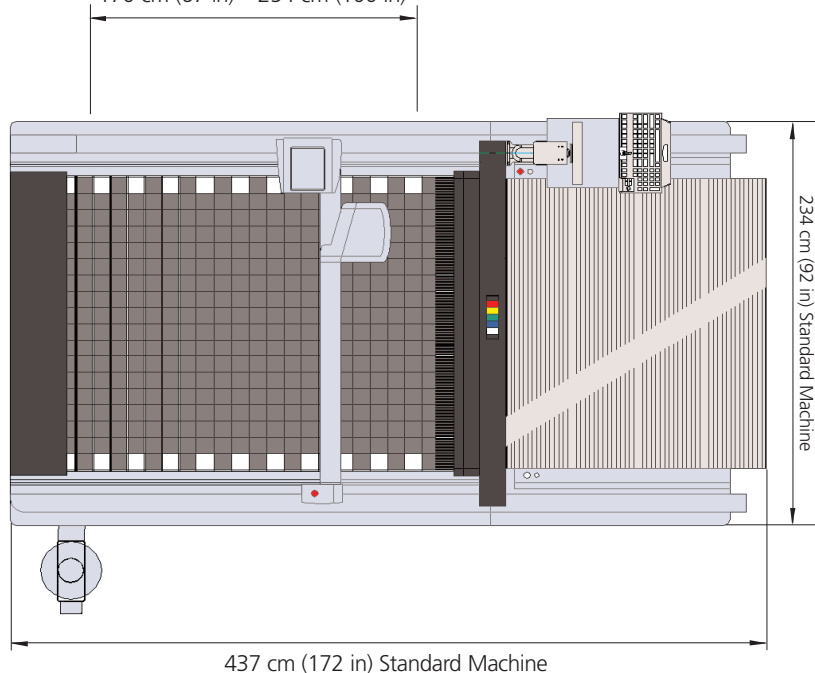
### Average Consumption

GT3250	18 KW
GT5250 / GT7250	24 KW
Compressed Air	113 liters/min @ 6.8 bar
	4 SCFM @ 100 PSI

### Operating Environment

Temperature (maximum)	43°C	110°F
Humidity (maximum)	95% (non-condensing)	
Vacuum System	760 m above sea level	2,500 ft. above sea level
Noise	75 dBA	

Available cutting lengths  
170 cm (67 in) • 254 cm (100 in)



Gerber Technology, Tolland, CT 06084 USA - Tel: +1(860) 871-8082  
www.gerberetechnology.com - info@gerbertechnology.com  
Copyright © 2009 Gerber Technology - A Gerber Scientific Company  
Form No. GT-series-08252009E