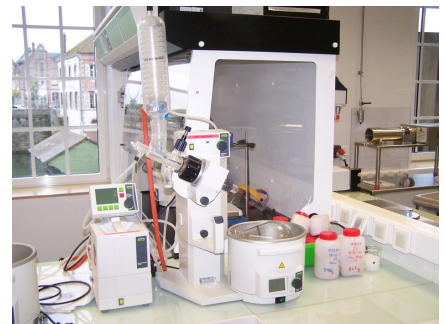




Laboratory Equipment (FR)

24 Rue Bertholet - 94110 **Arcueil**
(ARCUEIL)

Closing date: Wednesday **10 APRIL** starting 15:00



Bidding only on the internet!

29-03-19 19.28



Wednesday 10 April 2019 Laboratory Equipment

Specific terms and conditions of the online sale

Allocation of the lots	The "Commissaire Priseur" nominates the highest and last bidder and registers him the winning bidder of the lot. Information in "My Troostwijk" and an email confirm the winning bid. The "Commissaire Priseur" tells that a lot is not won if it is taken back by the vendor, because of a lack of bids to reach the reserve price.
Closing date	Wednesday 10 April 2019 starting 15:00 CET
Viewing	By appointment ARCUEIL 24 Rue Bertholet 94110 Arcueil, France By appointment GIDY 1 RUE DU CHENE DE LA CROIX 45520 GIDY, France
Markup	18.00%
VAT	20.00%
Collection	from Monday 15 April until Friday 10 May By appointment ARCUEIL 24 Rue Bertholet 94110 Arcueil, France from Monday 15 April until Friday 10 May By appointment GIDY 1 RUE DU CHENE DE LA CROIX 45520 GIDY, France
Viewing Instructions	Please note that this concerns an ascending auction sale, preceded by a viewing day. Placing a bid without viewing the equipment is at one's own risk. Please see articles 3 and 6 of the General Conditions.
Payment Details	Your immediate bank payment is required within 48 hours after receipt of the purchase agreement (proforma invoice). Please state your buyer number and the auction name. For buyers located outside the European Community, the EXA document proving the exportation of lots outside the European Community must be received within six weeks following the auction closing date. Without this document the sale will be considered as a French sale.
Collection Instructions	For the lots located in Arcueil : the buyer is responsible for dismantling/packaging, loading and transport of the lot. For the lots located in Gidy : the seller will load the goods on a tautliner free of charge. Packaging or specific loading or loading on something other than a tautliner will be proposed for a fee. The buyer is still responsible for the transport in a fitting vehicle. Troostwijk Auctions cannot accept any responsibility unless indicated otherwise. The delivery (pick-up bought lots) will only take place on the date and time decided BY TROOSTWIJK OR THE SELLER according to their removal planning and only after the buyer receives his delivery copy.
Prolongation	If a bid is made in the last 5 minutes before the lot closes, the closing time of that lot will be extended with 5 minutes until no bids are made. All lots without any bid will stay open until half an hour after the last closing time bid.



Lots without bid

From all lots without a bid, the closing time is extended with 30 minutes after the last closing time for lots in that auction.

Quantity, capacity, dimensions and weight of goods

Where a lot description contains details of quantities, capacities, dimensions or weights of the goods, these data are indicative only and no rights can be derived from this information. Bidders must satisfy themselves as to the accuracy of such data. If not indicated otherwise, please consider the origin documents of the equipments to be unavailable. Although the information contained herein was obtained from resources deemed reliable, the seller and Troostwijk make no warranty, expressed or implied as to the accuracy of the information.



Lot	Number	Description
1	1	HPLC Dionex, Ultimate 3000, HPLC
2	1	electrophoresis Biorad, Power Pac Basic, electrophoresis
3	1	Centrifuge Heraeus, Megafuge 1,0, Centrifuge
4	1	Specimen Computerized tomographic Scanner GE, Explore Locus MS90, Specimen Computerized tomographic Scanner
5	1	RI Detector Shodex, RH01, RI Detector
6	1	Atomic Absorption Spectrometer Perkin Elmer, AA800, Atomic Absorption Spectrometer
7	1	Laboratory oven 30-3000 ° degrees Nabatherm, Laboratory oven 30-3000 ° degrees
8	1	Spectrophotometer Hitachi, U-3010, Spectrophotometer
9	1	Hot water bath GRANT, Hot water bath
10	1	Compression traction machine MecMesin, Compression traction machine
11	1	Automated IHC / ISH Staining system Vision, Bond system Max, Automated IHC / ISH Staining system
12	3	Centrifuge Thermo Scientific, Multifuge , Centrifuge
13	1	Laboratory oven Panamat, Laboratory oven
14	1	Biochemistry Analyzer Idexx, VetTest 8008, Biochemistry Analyzer
15	11	Lot of 11 Finnpiquette F1 FINNPIPETTE, F1, Lot of 11 Finnpiquette F1
16	1	Biochemistry analyzer with Snap reader Idexx, VetTest 8008, Biochemistry analyzer with Snap reader
17	1	Uv Transilluminator Vilber, Lourmat, Uv Transilluminator
18	2	Set of 2 solvent degasser Metachem, Degassit, Set of 2 solvent degasser
19	1	Precision scale Mettler, MF MS 1602S, Precision scale
20	1	PH meter HANNA, PH213, PH meter
21	2	Set of 2 electronic pipettes TranferPette, Set of 2 electronic pipettes
22	1	Precision scale Sartorius, CUBIS MSA225S, Precision scale
23	1	HQD FIELD CASE Hach, HQD FIELD CASE
24	1	Electrode Flammatic, Electrode
25	1	Laboratory drying oven GENLAB, N40, Laboratory drying oven
26	1	Set of precision sieves Endecotts, Set of precision sieves



Lot	Number	Description
27	1	Flame photometer Ral, I-ON3, Flame photometer
28	1	ORBITAL SHAKER VWR, STD 3500, ORBITAL SHAKER
29	1	COD REACTOR Hach, COD REACTOR
30	15	Set of 15 HPLC columns Set of 15 HPLC columns
31	1	Chromatograph HP, 5890, Chromatograph
32	1	Super Fluid Extractor HP, 7680T, Super Fluid Extractor
100	1	12-position nitrogen evaporator ORGANOMATION, N-EVAPTM111, year built 2015, Nitrogen Evaporator with 12 positions; Number of sample positions 12; Precision needle valve at each sampling position; Circular sample holder; Range of tubes: 10 to 30mm; Gas flow meter: 0 to 5 l / min; Length and gauge of the needles: 102mm x 19 gauge; Bain-marie: - Reference heating water bath: 5085; - Year: 2015; - Temperature range bain marie: 30 ° C to 70 ° C; - Internal dimensions of the bath (Ø x P): 216x114mm; - External dimensions of the bath (WxDxH): 330x280x180mm; Nitrogen generator: - Manufacturer: PARKER; - Model: UHPN2-750C-E; - Serial number: 16GL0009; - Year: 2016; - Flow rate: 0.75 l / min; - Purity gas> 99.9995%; - Max output pressure: 5bar; - Dimensions (WxDxH): 345x417x869mm; Nitrogen buffer tank: - Manufacturer: SIAL; - Volume: 270 liters; - Dimensions: Ø 600mm and height 1800mm; Total dimensions evaporator + heating bath (WxDxH): 330x280x790mm; ref [3360]; lot located in Gidy; the lot will be loaded on tautliner by the seller, different loading or packing on additional delivery
101	1	Water purification system THERMO Scientific, Smart2Pure6, year built 2015, serial number 41884404, Water purification system; Quality of produced water Type I and type II; Conductivity Type I 0.055µS; Type II 0.067µS at 0.1µS; Production 6L / h; Integrated 6-liter tank with vent filter; Preprocessing cartridge / RO; Ultrapure polishing cartridge; Sterile filter 0.2µm; Pressure regulator; Dimensions (WxDxH) 300x400x545mm; Power 80W; ref [3380]; lot located in Gidy; the lot will be loaded on tautliner by the seller, different loading or packing on additional delivery
103	1	Air recirculation hood TRIONYX, LABOPUR H1300, year built 2015, Air recirculation hood; Flow 202m ³ / h; Time meter; Airflow controller; POLYVALENT activated carbon filter for corrosive and organic vapors, reference; CORG1301; Operules, walls and transparent bottom; Worktop and retention tray; Internal dimensions (WxDxH): 960x700x940mm; Overall dimensions (lxwxh): 1000x740x1200mm; ref [3357]; lot located in Gidy; the lot will be loaded on tautliner by the seller, different loading or packing on additional delivery
104	1	mixer Staro, Y110GS, mixer; Without propeller and stator; ref [3092]; lot located in Gidy; the lot will be loaded on tautliner by the seller, different loading or packing on additional delivery
105	1	mixer Staro, Y110GS, mixer; Without propeller and stator; ref [3095]; lot located in Gidy; the lot will be loaded on tautliner by the seller, different loading or packing on additional delivery
106	1	mixer Staro, Y110GS, mixer; Without propeller and stator; ref [3096]; lot located in Gidy; the lot will be loaded on tautliner by the seller, different loading or packing on additional delivery
107	1	UV-Vis spectrometer THERMO Scientific, SPECTRONIC 200E, year built 2015, serial number 8A4T281105, UV-Vis spectrometer; Spectral range 340 to 1000 nm; Resolution wavelength 1nm; Photometric range; Absorbance -0.1 to 2.5 Abs; % transmittance -0.1 to 100% T; Bandwidth <4nm; Parasitic light <0.2% T; Light source Tungsten halogen lamp; Monochromator Holographic network 600 lines / mm; Integrated tank racks; Backlit color LCD display; Overall dimensions (WxDxH) 390x300x160mm; Power 18W, 15VDC; Disposable bowl Rotilabo® XK20, semimicro, 1.6ml; ref [3374]; lot located in Gidy; the lot will be loaded on tautliner by the seller, different loading or packing on additional delivery



Lot	Number	Description
108	1	Barrel mixer J. ENGELSLMANN AKT.-GES, year built 1977, Drum mixer; Volume drum 65 liters; Rotating cage diameter: 1070mm; Overall dimensions (lxwxh): 1750x1060x1330mm; Power: 0.5KW; ref [3265]; lot located in Gidy; the lot will be loaded on tautliner by the seller, different loading or packing on additional delivery
109	1	Dry isolation transformer LEGRAND, 42502, year built 1998, Dry isolation transformer; Primary; - 230V / 10.9A; 400V / 6.3A; Secondary; 115V / 21.7A - 230V / 10.9A; 115V / 21.7A - 230V / 10.7A; Ucc: 2%; P: 2500VA; IP 21; ref [3224]; lot located in Gidy; the lot will be loaded on tautliner by the seller, different loading or packing on additional delivery
111	1	Single syringe dilator HAMILTON, Microlab 500, serial number MD90JD0615, Single syringe dilutor; 0.1% resolution of the syringe drive; Adjustable volume increments: 0.1% of the total volume of the syringe; Adjustable speed: 1 to 250 seconds per complete stroke of the syringe; 2 pipettors / probes match; ADVANCE Series B controller with memory storage methods; Different syringes; - Glass syringe 1ml GILSON ; - HAMILTON 1ml glass reagent / reagent syringe, reference 1001TLLX ; - HAMILTON 10ml glass reagent / diluent syringe, reference 1010TLL; Overall dimensions (lxwxh): 156x210x335mm; Power: 230V, 50Hz, 150VA; ref [3267]; lot located in Gidy; the lot will be loaded on tautliner by the seller, different loading or packing on additional delivery
112	1	Chest freezer WHIRLPOOL, C045W WHM4611, serial number 301303005891, Chest freezer; SNT class; Gross volume 460 liters; Useful volume 454 liters; Freezing capacity 21Kg / 24h; Power Consumption 1Kwh / 24h; Refrigerant R600a; Dimensions horstout (wxdxh) 1400x740x900mm; Power 230V, 50Hz, 16A; ref [3387]; lot located in Gidy; the lot will be loaded on tautliner by the seller, different loading or packing on additional delivery
113	1	Hoses for GAS Hoses for GAS; Hoses for industrial compressed gases; o Manufacturer: LINDE; o Quantity: 3; o Double PTFE braided sheath; o Maximum operating pressure: 250 bar; o burst pressure> 1000 bar; o Operating temperature: -20 ° C to + 60 ° C; o Leakage rate: 3.10-4 mbar l / s helium; o Minimum bending radius: 250mm; o 2 hoses equipped with a non-return valve, gas cut and flame cutter. DF3L-A; the brand SCHMITZ WELDTEC; - Flexible for scientific compressed gases; o Manufacturer: LINDE; o Corrugated stainless steel of a double braid; o Maximum operating pressure: 250 bar; o burst pressure> 1000 bar; o Operating temperature: -20 ° C to + 60 ° C; o Leakage rate: 3.10-7 mbar l / s helium; Minimum bending radius DN6: 140mm; o Minimum bending radius DN10: 220mm; ref [3233]; lot located in Gidy; the lot will be loaded on tautliner by the seller, different loading or packing on additional delivery
114	1	5 ring sprayer KIMBLE CHASE, serial number 422530, 5 ring sprayer; Spray head and borosilicate glass container; Working pressure 3 to 5 psi; ref [3472]; lot located in Gidy; the lot will be loaded on tautliner by the seller, different loading or packing on additional delivery
115	1	Rotary evaporator BÜCHI, R-114RE B-480, Rotary evaporator; Rotation speed 5 to 240 rpm; - Dimensions (WxDxH): 400x410x610mm; - Power: 35W; Heated bath B-480; - Volume: 5 liters; - Temperature range: + 20 ° C to 100 ° C; - Opening diameter of the bowl: 282mm; - Dimensions (WxDxH): 310x290x230mm; - Power: 1300W; ref [3230]; lot located in Gidy; the lot will be loaded on tautliner by the seller, different loading or packing on additional delivery
116	1	Balance PRECISA, XT220a, serial number 72351, Balance; Tray diameter: 80mm; Max weight: 220g; Reading: 0.1mg; Linearity: 0.2mg; e = 0.001g; d = 0.0001g; Overall dimensions (lxwxh): 210x340x345mm; Power: 12VDC, 6W; ref [3208]; lot located in Gidy; the lot will be loaded on tautliner by the seller, different loading or packing on additional delivery
117	1	Chemistry glassware Chemistry glassware; Distillation / rectification glass column; Various glass balloons with or without a column; Ground caps; Various lapped and non-lapped glass pieces ; ref [3218]; lot located in Gidy; the lot will be loaded on tautliner by the seller, different loading or packing on additional delivery



Lot	Number	Description
118	1	Peristaltic pump WATSON MARLOW, 503S, serial number 122551, Peristaltic pump; Speed: 0 to 170 rpm; cassettes; Reverse button rotation direction; Dimensions (LxWxH): 520x225x125mm; Power: 230V, 50Hz, 150VA, F0.8A; ref [3223]; lot located in Gidy; the lot will be loaded on tautliner by the seller, different loading or packing on additional delivery
120	1	Vortex shaker FISHERBRAND, ZX3, year built 2015, serial number 356177, Vortex shaker; Speed 0 to 3000 rpm; Mode of operation: Contact or continuous; Support diameter: 4.2mm; Dimensions (WxDxH): 150x165x130mm; Power: 15W, 230V, 50Hz; ref [3361]; lot located in Gidy; the lot will be loaded on tautliner by the seller, different loading or packing on additional delivery
121	1	Laboratory balance METTLER TOLEDO, PM6000, Laboratory balance; Tray dimensions: 230x180mm; Min / max weight: 50g / 6100g; Display accuracy: 0.1g; Reproducibility: 0.05g; Linearity: $\pm 0.1g$; e = 1g; d = 0.1g; Overall dimensions of the scale with plate (WxDxH): 195x315x85mm; Overall dimensions of the scale without shelf (WxDxH): 195x315x70mm; Power: 230V, 6VA; 2 scales PM6000 one with tray and one for display .; ref [3214]; lot located in Gidy; the lot will be loaded on tautliner by the seller, different loading or packing on additional delivery
122	1	Column for HPLC Beckman, SPHEROGELTM TSK G4000PW, serial number 6PW131, Column for HPLC; Particle diameter (dp) 1.3 μ ; Dimensions: 7.5mmx60cm; HPLC column; ref [3235]; lot located in Gidy; the lot will be loaded on tautliner by the seller, different loading or packing on additional delivery
123	1	pH meter WTW, Inolab pH level 2, serial number 3430007, pH meter; Measurement ranges and resolution; - pH: -2,000 to +19,999 or -2.00 to +19.99; U (mV): -999.9 to +999.9 or -1999 to +1999; - T ° C: -5.0 ° C to + 105 ° C; Comes with :; - WTW pH electrode probe SenTix 81, pH 0-14, 0-100 ° C; - Bioblock Scientific glass electrode; Overall dimensions (LxWxH): 250x300x70mm; Energy: - Input: 230VAC, 50Hz, 5.6VA; - Output: 12VDC, 130mA, 1.56VA; - 4 1.5V AA batteries; ref [3244]; lot located in Gidy; the lot will be loaded on tautliner by the seller, different loading or packing on additional delivery
124	1	Automatic spray gun DeVILBISS, Cobra 1, Automatic spray gun; Connections; - Fluid and recirculation inlet: 1/4 BSP, 7 bar max; - Air inlet: 1/4 BSP, 7 bar max; - Cylinder / trigger: 1/8 BSP, 4 to 7 bar; Maximum operating temperature: 40 ° C; Gun body material: hard anodized aluminum; Material tip, needle and spray head: Stainless steel; For ATEX zone: II 2 GX; ref [3251]; lot located in Gidy; the lot will be loaded on tautliner by the seller, different loading or packing on additional delivery
125	1	High pressure regulator with adjustable trigger AIR LIQUIDE, PROTAL II, year built 2002, High pressure regulator with adjustable trigger; CO2 gas; P1: 200bar; P2: 0 to 10bar; Flow Q1 at the outlet: 25m3 / h; 2 Manometers;; 0 to 315bar; 0 to 16bar; ref [3278]; lot located in Gidy; the lot will be loaded on tautliner by the seller, different loading or packing on additional delivery
126	1	UV lamp VILBER LOURMAT, VL-6.LC, year built 2015, serial number 15102400, UV lamp; Wavelength 254nm and 365nm; Light source UV lamp; Power 24W, 230V; UV lamp; ref [3375]; lot located in Gidy; the lot will be loaded on tautliner by the seller, different loading or packing on additional delivery
127	1	Fraction collector WATERS, WFC, serial number 44050, Fraction collector; Standard tube rack of 120 tubes, 12 to 18mm in diameter and 90 to 180mm in height; Different modes of operation; Local control of the collector or remotely via the Waters software; Overall dimensions (WxDxH): 380x325x300mm; Power: 230VAC, 0.28A, 50Hz; ref [3212]; lot located in Gidy; the lot will be loaded on tautliner by the seller, different loading or packing on additional delivery



Lot	Number	Description
128	1	vials Bottles; Approximately 45 vials to screw, white of 250 ml; Approximately 100 vials to screw, 125ml white; About 60 bottles KOLA screw type round 120ml T3 ring PH40; About 95 white bottles, 250 ml, graduated; Approximately 110 white bottles, 125 ml, graduated; About 40 brown bottles of the 125-ml pillbox type; Approximately 30 white bottles of the 50ml pillbox type; Approximately 30 vials type antibiotic VB T3 10ml ring WI 20mm ;; Approximately 100 vials antibiotic type VB T3 24ml ring WI 20mm ;; Approximately 150 sample bottles, 30ml white, PH30 ring; 8 bottles of 1 liter graduated in increments of 200ml ;; ref [3220]; lot located in Gidy; the lot will be loaded on tautliner by the seller, different loading or packing on additional delivery
129	1	Steritest Millipore, TCPU 23050, serial number 918-CE, Steritest; Peristaltic pump; 230VAC 4A - 50Hz - 190 W; Dimensions approx. (WxDxH): 550x300x120 mm; ref [3222]; lot located in Gidy; the lot will be loaded on tautliner by the seller, different loading or packing on additional delivery
130	1	Double beam detector HP, Series 1050, Dual beam detector; Wavelength range 190 to 600 nm; Wavelength accuracy: ± 1 nm; Source: Deuterium lamp; Dimensions (WxDxH): 330x600x205mm; Power: 230V, 50Hz, 150VA; ref [3229]; lot located in Gidy; the lot will be loaded on tautliner by the seller, different loading or packing on additional delivery
131	1	Piston pump SOTAX, CY 1-50, serial number 02.3.015, Piston pump; Dimensions (WxDxH): 100x245x320mm; ref [3236]; lot located in Gidy; the lot will be loaded on tautliner by the seller, different loading or packing on additional delivery
132	1	Multi-channel peristaltic pump ISMATEC, IPC12, serial number ISM762A-0211, Multi-channel peristaltic pump; Flow rate 0.002 to 44ml / min; 12 channels; 8 pebbles; Rotation speed: 0.4 to 44 rpm; Speed selection from 1 to 100%; AC cassettes with manual pressure lever; Analysis distributor; Overall dimensions (lxwxh): 160x260x125mm; Power: 230V, 50Hz, 30W; ref [3238]; lot located in Gidy; the lot will be loaded on tautliner by the seller, different loading or packing on additional delivery
133	1	Portable shockproof thermometer EUTECH Instrument, Ecoscan Temp5, serial number 347096, Portable shockproof thermometer; Thermistor temperature probe 100K; Temperature range: -40°C to 125°C ; Resolution: $0.1^{\circ}\text{C} / 0.1^{\circ}\text{F}$; Accuracy: $\pm 0.2^{\circ}\text{C} / 0.4^{\circ}\text{F}$; LCD screen; Temperature display in $^{\circ}\text{C}$ and $^{\circ}\text{F}$; Display and storage temperature max and min; Function of freezing a measurement; Calibration function; Integrated backup memory in the absence of batteries; 4 LR03 batteries; Battery wear indicator; Self-extinguishing function after 17 minutes; Dimensions (LxWxH): 140x70x35mm; ref [3270]; lot located in Gidy; the lot will be loaded on tautliner by the seller, different loading or packing on additional delivery
134	1	Stirring cell Merck Millipore, AMICO 8003, Stirring cell; Applications Protein purification and protein concentration; Quantity: 3 stirring cells including 2 users and 1 new; Height: 7.7cm; Filtration area: 0.9 cm ² ; Treated volume: 3ml; Filter diameter: 2.5cm; ref [3272]; lot located in Gidy; the lot will be loaded on tautliner by the seller, different loading or packing on additional delivery
135	1	Rotor Rotor; 1 SIGMA rotor; - Model: 115/97; - Speed: 15300 rpm; - Nr. 12/48; - Number of tubes: 24x5g max; 1 rotor ALC;; - Speed: 5000 rpm; - Number of tubes: 12; - Tube support; 12 tubes of 135ml for centrifuge; 14 plastic centrifuge tubes; Cap for centrifuge tubes; ref [3273]; lot located in Gidy; the lot will be loaded on tautliner by the seller, different loading or packing on additional delivery
136	1	Microplate incubator LAB LINE Instrument, 2001-1CE, serial number 0501-0031, Microplate incubator; 96-well microplates MILLIPORE MAIPN45; 12 sets of 96 well microplates NUNC BRAND Products; Dimensions (W x D x H): 220x320x150mm; Power: 230V, 50Hz, 0.6A, 150W; ref [3276]; lot located in Gidy; the lot will be loaded on tautliner by the seller, different loading or packing on additional delivery



Lot	Number	Description
137	1	Test tubes + Petri dishes + Flasks Test tubes + petri dishes + flasks; Lot of plastic test tubes; Lot of white glass test tubes; Lot of test tubes in white glass and to screw; Plugs for test tubes for screwing; 8 cartons of 100 borosilicate glass 12x75mm hemolysis tubes; Approximately 300 white haemolysis tubes 6ml, 11.6x75x0.5; Lot of stoppers; 7 glass petri dishes with lid, JOVIREL France; 2 puddles in PYREX; ref [3280]; lot located in Gidy; the lot will be loaded on tautliner by the seller, different loading or packing on additional delivery
138	1	Piston pump SOTAX, CY 1-50, serial number 02.3.013, Piston pump; Dimensions (WxDxH): 100x245x320mm; ref [3281]; lot located in Gidy; the lot will be loaded on tautliner by the seller, different loading or packing on additional delivery
139	1	GAS chromatography column GAS chromatography column; Manufacturer: ALLTECH; o Year: 1989; o Type: Glass; o Dimensions: L6m, OD6mm, ID4mm; o Mesh: 100/120; Manufacturer: ALLTECH; o Year: 1989; o Type: Glass; o Dimensions: L2m, OD6mm, ID2mm; o Mesh: 80/100; Manufacturer: CHROMPACK; o Year: 1986; o Lot number: 362229; o Type: Glass; o Dimensions: 2mx1 / 4 ² x2mm GL; o Support: 10% SE52 Chromosorb WAW 80x100 mesh; tmax: 300 ° C.; Manufacturer: CHROMPACK; o Year: 1986; o Lot number: 36968; o Type: Glass; o Dimensions: 2mx1 / 4 ² x2mm GL; o Support: 3% DEXSIL 300 GC Chrom. WAW 80x100 mesh; tmax: 400 ° C.; Manufacturer: CHROMPACK; o Year: 1986; o Lot no.: 37108; o Type: Glass; o Dimensions: 2mx1 / 4 ² x4mm GL; o Support: 10% FFAP Chromosorb WAWDMCS 80x100 mesh; t max: 275 ° C; Manufacturer: CHROMPACK; o Year: 1986; Lot No.: 361219; o Type: Glass; o Dimensions: 3mx1 / 4 ² x2mm GL; o Support: 7% BDS / Gasohrom Q 80x100 mesh; t max: 225 ° C; Manufacturer: RESTEK; o Lot number: 53332800; o Type: Stainless steel; o Dimensions: 1 - 8m; o Support: 20% DC550 Chromosorb PAN-DmCS 100/120; Manufacturer: RESTEK; o Lot number: 80401800; o Type: Stainless steel; o Support: 3% RTX1 Siloport 100/120; ref [3213]; lot located in Gidy; the lot will be loaded on tautliner by the seller, different loading or packing on additional delivery
140	1	Glassware Glassware; RETTBERG graduated Bromine ampoule (250 ml); 100ml glass Erlenmeyer flask with small diameter ground neck, SCHOTT DURAN brand; 250ml Erlenmeyer flask in PYREX; 2 liquid-liquid extractors MIXXOR of 20ml.; ERLLENMEYER BIO-RAD brand; ref [3225]; lot located in Gidy; the lot will be loaded on tautliner by the seller, different loading or packing on additional delivery
141	1	Microscope AUS JENA, Microscope; 4 objectives; - x6.5 to JENA; - X9 to the JENA; - X13 aus JENA; - x17.5 Visiogan 2/28; Wheel up and down the support; Adjusting the position of the mirror; On / off button; Intensity adjustment button; Dimensions (WxDxH): 315x350x560mm; ref [3226]; lot located in Gidy; the lot will be loaded on tautliner by the seller, different loading or packing on additional delivery
142	1	Pump MARKOS-MEFAR, ECO, serial number 03F0089394, Pump; Dimensions (WxDxH): 185x125x95mm; ref [3227]; lot located in Gidy; the lot will be loaded on tautliner by the seller, different loading or packing on additional delivery
143	1	Tablet hardness tester VANKEL, VK200, serial number 40-2110, Tablet hardness tester; Range from 0.4 to 35Kilopounds; Reading: Kp and Newton; Integrated printer; Missing a jaw; Dimensions (WxDxH): 280x178x152mm; Power: 230V, 50Hz, 0.75A; Tablet hardness tester; ref [3228]; lot located in Gidy; the lot will be loaded on tautliner by the seller, different loading or packing on additional delivery
144	1	Sample preparation unit E. MERCK, Absorbex SPU, year built 1991, serial number 5569, Sample preparation unit; 24 posts; Inner diameter: 220mm; Inside height: 150mm; Total height: 230mm; ref [3237]; lot located in Gidy; the lot will be loaded on tautliner by the seller, different loading or packing on additional delivery
145	1	Interface SOTAX, PA29A 1, Interface; 5 ways; Pressure regulator: 0 to 1 MPa; Overall dimensions (WxDxH): 290x370x165mm; Power: 230V, 50Hz, 90VA; ref [3246]; lot located in Gidy; the lot will be loaded on tautliner by the seller, different loading or packing on additional delivery



Lot	Number	Description
146	1	Dissolution bath Dissolution bath; Tray equipped with 7 posts; 6 glass tubes with retaining flange; Manual drain valve of the tank; Tray dimensions LxWxH in mm: 1120x200x180; ref [3257]; lot located in Gidy; the lot will be loaded on tautliner by the seller, different loading or packing on additional delivery
147	1	Sterile filters and sampling tubes Sterile filters and sampling tubes; Approximately 50 conical sampling tubes, with stopper and transparent brown color; - About 250 conical polypropylene sampling tubes;; Manufacturer: BECTON DICKISON; Type: Blue maxTM; graduates ;; Volume: 50ml; Dimensions: 30x115mm; - Sterile filters;; Manufacturer: SARTORIUS; Model: MIDISART 2000; Type: Air / Gas filter; Membrane material: Polytetrafluoroethylb (PTFE); Retention rate: 0.2µ; Size of the pore of the filter: 0.2µ; Maximum working pressure: 3 bar; Filtration area: 20cm ² ; ref [3260]; lot located in Gidy; the lot will be loaded on tautliner by the seller, different loading or packing on additional delivery
148	1	Graduated cylinders 2000ml FISHERBRAND, Graduated cylinders 2000ml; ref [3367]; lot located in Gidy; the lot will be loaded on tautliner by the seller, different loading or packing on additional delivery
149	1	Balance FISHER Scientific, COMPACT, year built 2015, Balance; 5000g capacity; Reading 1g; Linearity 0.1mg; Repeatability 0.1mg; Tray diameter 120mm; LCD type screen; Dimensions (WxDxH) 140x200x40mm; Power 3 AA batteries; ref [3372]; lot located in Gidy; the lot will be loaded on tautliner by the seller, different loading or packing on additional delivery
150	1	Freezer ARTHUR MARTIN, 928.080.0, serial number 448.00366, Freezer; Volume 50L; Freezing capacity 7Kg / 24h; R134a refrigerant fluid; External dimensions (WxDxH) 525x560x540mm; Power 230V, 50Hz, 85W, 0.6A; ref [3477]; lot located in Gidy; the lot will be loaded on tautliner by the seller, different loading or packing on additional delivery
151	1	ARGON dynamic flowmeter SGDG, ARGON dynamic flowmeter; Gas: Argon; Inlet pressure: 200 bar; Pressure gauge: 0 to 300 bar; Flow rate: 0 to 15 l / min; ref [3211]; lot located in Gidy; the lot will be loaded on tautliner by the seller, different loading or packing on additional delivery
152	1	Single channel thermocouple recorder DICKSON, KTX-CE, serial number 7200074, Single Channel Thermocouple Recorder; Chart type: Circular; Diameter of the graph: 20.5cm; Temperature measurement range: 50 ° C to + 500 ° C; Thermocouple type K; LCD display of temperature in degrees Celsius or Fahrenheit; 2 boxes of graphic discs; 2 boxes of 6 markers P222 + 1 box of 4; Overall dimensions (lxwxh): 337x538x267mm; ref [3219]; lot located in Gidy; the lot will be loaded on tautliner by the seller, different loading or packing on additional delivery
153	1	Glass bottle Glass bottle; Diameter 280mm; Opening diameter: 140mm; Total height: 470mm; Orifice drain: Ø 25mm; Cover diameter: 160mm; ref [3253]; lot located in Gidy; the lot will be loaded on tautliner by the seller, different loading or packing on additional delivery
154	1	SOTAX validation case SOTAX validation case; Oscillation sensor with clamp; Reference: 6326; - Oscillation sensor support;; Reference: 6326; - agitator height tester;; Reference: 3395; - Caliber for clutch;; Reference: 4776; - Laboratory thermometer;; Reference: Y500-0030; 0 to 50 ° C; ref [3263]; lot located in Gidy; the lot will be loaded on tautliner by the seller, different loading or packing on additional delivery
155	1	Laboratory hood ScienceWare, Laboratory hood; Plastic material; Sliding glass and can be locked at half height, in the open position and in the closed position; Internal dimensions (WxDxH): 650x320x420mm; Glass dimensions (LxW): 580x530mm; External dimensions (WxDxH): 670x600x370mm; Laboratory hood; ref [3269]; lot located in Gidy; the lot will be loaded on tautliner by the seller, different loading or packing on additional delivery
156	1	Owl JGC gel separation system JOEY, JGC4, Owl JGC gel separation system; Approximate volume of gel 6ml; Spacer plate 10x10cm; Bubble level; Internal dimensions (WxDxH): 105x38x90mm; ref [3275]; lot located in Gidy; the lot will be loaded on tautliner by the seller, different loading or packing on additional delivery



Lot	Number	Description
157	1	Thermometers and pipettes set Thermometers and pipettes set; 3 thermometers for refrigerator; - Brand: VWR; - Temperature range: -5 ° C to + 15 ° C; - Suitable containers and stoppers FRIO-Temp; 2 thermometers for oven: - Brand: VWR; - Temperature range: + 20 ° C to + 130 ° C; - 1 container and suitable stopper FRIO-Temp; 6 DESAGA Heidelberg graduated serology pipettes 1 to 10cmm; ref [3279]; lot located in Gidy; the lot will be loaded on tautliner by the seller, different loading or packing on additional delivery
158	1	Fridge FAR, Fridge; Useful volume refrigerator 80 liters; Useful volume freezer tray 10 liters; Dimensions horstout (wx dxh) 470x450x835mm; ref [3471]; lot located in Gidy; the lot will be loaded on tautliner by the seller, different loading or packing on additional delivery
159	1	Laminar flow hood ADS Laminaire, Laminar flow hood; System for raising and lowering the window with audible signal; UV lamp function and lighting; Mounted on a white steel frame; Dimension of the location of the absolute filter (LxW): about 715x255mm; Dimensions of the workstation (WxDxH): 1160x620x850mm; Frame dimensions (WxDxH): 1365x715x815mm; Dimensions of the hood (WxDxH): 1290x850x1415mm; Power: 230V, 50Hz; photos non contractual, thank you to visit the lot; ref [3173]; the lot will be loaded on tautliner by the seller, different loading or packing on additional delivery
160	1	Marble table Marble table; Dimensions (LxWxH): 850x450x80mm; ref [3262]; lot located in Gidy; the lot will be loaded on tautliner by the seller, different loading or packing on additional delivery
161	1	Electronic microscope SÜSS Microtec, MJB4, year built 2011, serial number MJB4-000356, Electronic microscope; Microscope - Type Süss M604, - N / A W6168 Lamp Power Supply - Type CPC350, - PN / S S11T01Z01-047 - Lamp HG350W / S Optics MJB4 / UV400 / W-100 Eyepieces Olympus WHN-10X / 22 Objectives Olympus MPlanFL N - MPLFLN 2.5X / 0.08 - MPLFLN 5X / 0.15 - MPLFLN 10X / 0.30 Utilities - Nitrogen 2 to 3 bar - Compressed air 5.5 to 7 bar - Vacuum -0.8 bar Spectral sensitivity range 350 to 460nm display 0.01 to 1000 mW / cm2 Insulating vibration table - Type VIT800 - Max. 320 daN - Dimensions (LxWxH) 800x800x760mm Overall Dimensions (LxWxH) 800x800x1420mm Power 230VAC, 50Hz, 1300VA, 16A; ref [2824]; the lot will be loaded on tautliner by the seller, different loading or packing on additional delivery



Lot	Number	Description
-----	--------	-------------

162	1	ACQUITY UPLC H-CLASS System WATERS, year built 2015, ACQUITY UPLC H-CLASS System; Dwell volume <400 µL; Integrated leak management Leak sensors and safe leak handling; Settable flow rate range 0.010 to 2.2 mL / min; Cycle time <30s inject-to-inject; UPLC equipped with; - QSM module; - SM-FTN module; - CMP module; - Column heater module; - PDA detector; - Solvent tray; QSM module Quaternary solvent manager; - Model UPQSM; - Serial number E14QSM530A; - Number of solvents Blend up to four solvents in any combination; - Solvent degassing Integrated vacuum degassing, oven chambers; - Solvent blending Automated, On-line pH, ionic strength; - Gradient formation Low-pressure mixing, quaternary gradient; - Primary check valve Intelligent intake valve; - Flow accuracy ± 1.0% at 0.5 to 2.0 mL / min using 100% A. back pressure 600 to 1000 psi with degassed H ₂ O.; - Baseline noise <1.0 mAu; - Composition accuracy ± 0.5% absolute from 5% to 90% from 0.5 to 2.0 mL / min; - Compressibility compensation Automatic and continuous; - Priming Wet priming can run up to 4 mL / min; - Pump seal wash Equipped with an automated wash system to flush the rear of the high pressure seal and the plunger; - Flow ramping; o Range 0.01 to 30.00 min to reach 2.0 mL / min; o Default 0.45 min to reach 2.0 mL / min; - Power 100 / 240VAC, 50 / 60Hz, 360VA; FTN module Sample manager FTN; - Model UPSMFTN; - Serial number D14SDI337G; - Injection volume range 0.1 to 10.0 µL as standard in 0.1 µL increments; - Accuracy suction ± 0.2 µL; - Linearity > 0.999 for standard needle; - Precision; o <1% RSD 0.2 to 1.9 µL; o <0.5% RSD 2.0 to 10.0 µL; - Number of sample plates; o 96 and 384 microtiter plates; o 48 position 2.00 mL vial plates; o 48 position 0.65 mL micro-centrifugal flat tube; o 24 position 1.50 mL micro-centrifuge flat tube; - Sample compartment 4.0 to 40.0 ° C, settable in 0.1 ° C increments; - Temperature accuracy ± 0.5 ° C; - Temperature stability ± 1.0 ° C; - Injection needle wash Integral, active, programmable; - Minimum sample required 3 µL residual; - Advanced sample manager capabilities Auto-dilution, auto-addition and load-ahead; - Power 100 / 240VAC, 50 / 60Hz, 400VA; Column compartment module CMP; - Model UPCMA; - Serial number D14CMP317G; - Switching valves Two injector-style, seven port, six positions, switching valves, left and right, waste and bypass position; - Column compartment Accommodates up to four columns, in parallel; - Column size 20 to 150mm length x 2.1 to 4.6mm internal diameter; - Column temperature control 10.0 to 90.0 ° C settable in 0.1 ° C increments; - Column tracking; - Compartment operational temperature range 15 ° C below ambient to 90 ° C; - Compartment temperature measuring accuracy ± 1.0 ° C; - Power 100 / 240VAC, 50 / 60Hz, 400VA; Column heater; - Model CH-30A; - Column size 20 to 300mm length x 2.1 to 7.8mm internal diameter, plus or a guard column or in-line filter (20mm maximum); - Column temperature range 4.0 to 65.0 ° C in 0.1 ° C increments; - Compartment temperature measurement accuracy ± 0.8 ° C; - Dimensions (WxDxH) 203x356x552mm; PDA detector; - Model UPPDATC; - Serial number E14UPD205A; - Wavelength range 190 to 500 nm; - Wavelength accuracy ± 1 nm; - Linearity range Deviation at 2.0 AU £ 5%; - Optical resolution 1.2 nm; - Digital resolution 0.6nm / pixel to 500nm; - Drift £ 1.0 x 10 ⁻³ / AU / hour / ° C; - Prealigned light source, intelligent technology Deuterium lamp; - Path length 10mm; - Flow cell volume 500 nL; - 1000 psi pressure limit; - Dimensions (WxDxH) 343x607x194mm; - Power 100 / 240VAC, 50 / 60Hz, 185VA; Annual maintenance by WATERS Company; Complete documentation; ref [2856]; the lot will be loaded on tautliner by the seller, different loading or packing on additional delivery
163	1	Insulators 3 gloves and half-scuba isolator La Calhène, Insulators 3 gloves and half-scuba isolator; 2 transfer insulators 3 gloves MAN version - Type 2003 - Serial numbers 1623 and 1625 - Year 1999 - Overall dimensions (LxWxH) 1500x680x750mm - Overall dimensions (LxWxH) 1900x1300x2000mm - Useful volume 750 liters - Flow 18m ³ / h - Operating pressure 30 ± 4 Pa - 1 built-in air intake module o 1 inlet pre-filter o 1 RGE160 exhaust blower o 1 DN50 PVC isolation valve o 1 stainless steel filter housing with EMERY test connection o 1 filter HEPA 99.995% MPPS type 3P3 - 1 air outlet module consisting o 1 filter HEPA 99.995% MPPS type 3P3 o 1 filter housing made of stainless steel with stitching for EMERY test o 1 isolation valve DN50 in PVC o 1 bypass valve -pass output sterilizing agent o 1 pressure sensor SITRANS 7MF4433 - 1 control box JUMO PARIS 1 - Grab bar and hook of the cuffs - 3 sleeves HYPALON - 1 door DPTE® ALPHA - 1 door DPTE® BETA for isolator 1625 only - 1 container Ø270 type BRCT270 for isolator 1625 only - 1 conventional door Ø565mm - 1 electric box equipped o Power indicator o Button selection of phases o Buzzer o General disconnecter - Power 230V, 50Hz, 2A; ref [2329]; the lot will be loaded on tautliner by the seller, different loading or packing on additional delivery



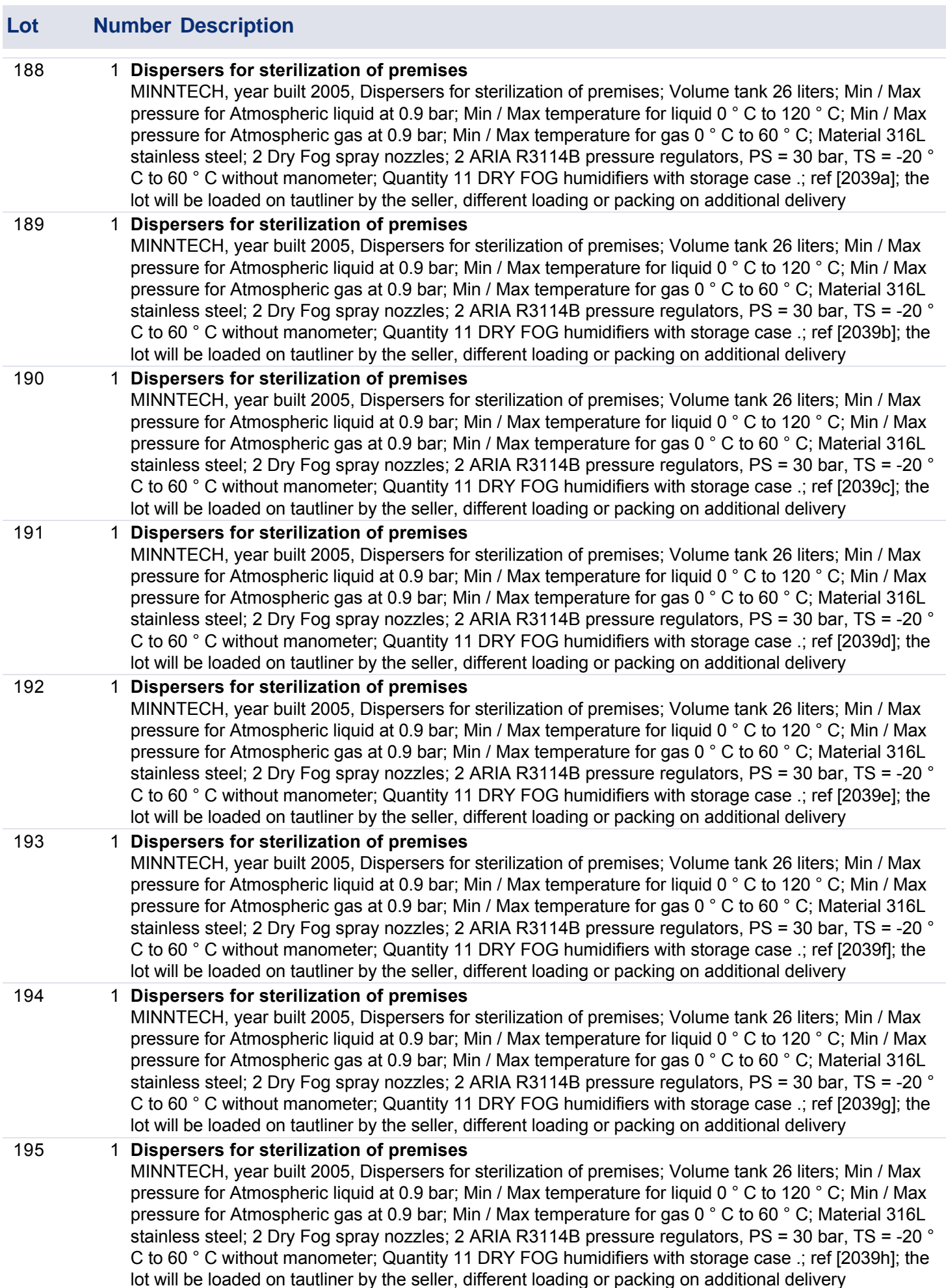
Lot	Number	Description
164	1	fermenter Infors, fermenter; Double-envelope rotary drum; Total volume 15 liters; Julabo F34 HE Cryothermostat; ref [2847]; the lot will be loaded on tautliner by the seller, different loading or packing on additional delivery
165	1	Granulator - Oscillating Bowl Dryer ZANCHETTA - ROMACO , ROTOLAB , year built 1999, serial number V0519.01, Granulator - Oscillating Bowl Dryer; Double-envelope rotary drum; Total volume 15 liters; Julabo F34 HE Cryothermostat; Granulator - Oscillating Bowl Dryer; ref [1478]; the lot will be loaded on tautliner by the seller, different loading or packing on additional delivery
166	1	Insulator 4 gloves GETINGE La Calhène, 1219, Insulator 4 gloves; GEMÜ valves; 2 BOURDON E733 pressure transmitters, -1 to +3 bars; 2 conductivity probes CLS15 E + H; Dimensions (LxWxH) 2300x900x1900mm; ref [3007]; the lot will be loaded on tautliner by the seller, different loading or packing on additional delivery
167	1	Single substrate SPIN processor APT GmbH, SPIN150, serial number K.029.591, Single substrate SPIN processor; Suitable for coating, cleaning, rinsing / drying, developing, etching and other processes .; ref [2826]; the lot will be loaded on tautliner by the seller, different loading or packing on additional delivery
168	1	Rotary evaporator BÜCCHI, R-210, year built 2011, serial number 1000074496, Rotary evaporator; Rotation speed 20 at 280rpm; Adjustable angle 0 - 25 °; Range of 50 to 4000 ml balloons; Max capacity of the balloon 3Kg; Cooling surface of the vertical exchanger 0.146m ² ; Overall dimensions (lxhxd) 590x840x420mm; Power 100-240VAC, 50Hz, 60W; Heated bath B-491; n / a 1000074447; Power 1700W; Heating power 1300W; Temperature range 20 to 180 ° C; Dimensions (WxHxD) 285x240x300mm; Vacuum pump V-700; n / a 1000074756; Temperature range +10 to + 40 ° C; Flow 1.8m ³ / h; Power 100-240VAC, 50Hz, 210W; V-850 display; n / a 1000072769; Power 30VDC, 10W; F-100 cold unit; n / a 589410; Temperature range Fixed at + 10 ° C; Refrigerant R134a - 280g; Flow rate 2.5 l / min; Dimensions (WxHxD) 280x500x420mm; Power 230V, 50Hz, 6.3A, 850W; ref [2837]; the lot will be loaded on tautliner by the seller, different loading or packing on additional delivery
169	1	FT-NIR Process Analyzer ThermoFischer Scientific, Antaris MX, year built 2010, FT-NIR process analyzer; Simultaneous fiber optic multiplexing technology; Temperature range + 15 ° C to + 35 ° C; Photometric linearity Slope of 1.0 ± 0.05 and intersection of 0.0 ± 0.05; Resolution 4cm ⁻¹ on the 0.6nm band at 1250nm; Spectral range 12000 to 4000cm ⁻¹ ; Source Type High intensity halogen NIR source; An SABIR fiber optic measuring probe, serial number AFC0707012; Dimensions (LxWxH) 482x406x247mm; Power 90 / 264VAC, 1.7A; ref [2850]; the lot will be loaded on tautliner by the seller, different loading or packing on additional delivery
170	1	Rotary evaporator BÜCCHI, R-210, year built 2011, serial number 1000074497, Rotary evaporator; Rotation speed 20 at 280rpm; Adjustable angle 0 - 25 °; Range of 50 to 4000 ml balloons; Max capacity of the balloon 3Kg; Cooling surface of the vertical exchanger 0.146m ² ; Overall dimensions (lxhxd) 590x840x420mm; Power 100-240VAC, 50Hz, 60W; Heated bath B-491; n / a 1000074439; Power 1700W; Heating power 1300W; Temperature range 20 to 180 ° C; Dimensions (WxHxD) 285x240x300mm; Vacuum pump V-700; n / a 1000074658; Temperature range +10 to + 40 ° C; Flow 1.8m ³ / h; Power 100-240VAC, 50Hz, 210W; V-850 display; n / a 1000072765; Power 30VDC, 10W; F-100 cold unit; n / a 594611; Temperature range Fixed at + 10 ° C; Refrigerant R134a - 280g; Flow rate 2.5 l / min; Dimensions (WxHxD) 280x500x420mm; Power 230V, 50Hz, 6.3A, 850W; ref [2859]; the lot will be loaded on tautliner by the seller, different loading or packing on additional delivery



Lot	Number	Description
171	1	Biodecontamination system STERIS, VHP-1000-ARD, Biodecontamination system; Mobile biodecontamination unit; ARD-230 type; Serial number 0218508-01; Injection rate 2 to 12 g / min; Air flow range 14 to 34 m ³ / h; Temperature range 38 ° C; Control panel type "touch panel"; Roller printer; Bottle location of the decontamination solution; 4 wheels with brake; Power 230V, Monophase, 9A, 50Hz; Overall dimension (WxDxH) 650x900x1020 mm; Disinfectant gas circulation unit; Type ARD-RC230; Serial number SP3996-0006; 4 wheels with brake; Power 230V, Monophase, 1A, 50Hz; Overall dimension (WxDxH) 600x800x1100 mm; Drying / drying tank; Type Dryer; 2 wheels; Capacity ≈ 2000 gr; Overall dimension (WxDxH) 400x400x1140 mm; Hoses and equipment equipped with CAMLOCK type connection; ref [2865]; the lot will be loaded on tautliner by the seller, different loading or packing on additional delivery
172	1	Biodecontamination system STERIS, VHP-1000-ARD, Biodecontamination system; Mobile biodecontamination unit; ARD-230 type; Serial number 0221609-02; Injection rate 2 to 12 g / min; Air flow range 14 to 34 m ³ / h; Temperature range 38 ° C; Control panel type "touch panel"; Roller printer; Bottle location of the decontamination solution; 4 wheels with brake; Power 230V, Monophase, 9A, 50Hz; Overall dimension (WxDxH) 650x900x1020 mm; Disinfectant gas circulation unit; Type ARD-RC230; Serial number SP3996-0005; 4 wheels with brake; Power 230V, Monophase, 1A, 50Hz; Overall dimension (WxDxH) 600x800x1100 mm; Drying / drying tank; Type Dryer; 2 wheels; Capacity ≈ 2000 gr; Overall dimension (WxDxH) 400x400x1140 mm; Hoses and equipment equipped with CAMLOCK type connection; ref [2866]; the lot will be loaded on tautliner by the seller, different loading or packing on additional delivery
173	1	Low humidity hood EREA, BG16, year built 1994, Hood with low humidity; Blow flow 120m ³ / h; Dehydrator type M120; Regulator ERTK 800; TC1 temperature controller; Humidity transmitter HBG5F001; Digital display EXM2UF001; Cold battery type BSH; Differential pressure switch P33; HEPA filter; 4 ovoid gloves; TRIPLEX front glass screen with motorized movement .; A control box and operating light .; 304L stainless steel sheets; External dimensions (WxDxH) approximately 1500 x 1000 x 3030 mm; Internal dimensions (WxDxH) approximately 1500 x 850 x 1150 mm; Power 230V, 50Hz; ref [2326]; the lot will be loaded on tautliner by the seller, different loading or packing on additional delivery
174	1	Microbiological safety station EREA, EV 013.16, year built 1999, Microbiological safety station; Class IIB; Speed variator; Differential pressure pressure detectors in blast and discharge fault detection; HEPA H14 panel blow and discharge filter; Lighting a waterproof fluorescent strip 36W and four 18W UV strips placed around the filters; Tempered glass front screen with motorized movement .; A turntable equipped with control and signaling buttons .; 316L stainless steel sheets; External dimensions (WxDxH) approximately 1730 x 1100 x 2680 mm; Internal dimensions (WxDxH) approximately 1670 x 700 x 940 mm; Power 230V, 50Hz; ref [2336]; the lot will be loaded on tautliner by the seller, different loading or packing on additional delivery
175	1	Microbiological safety station EREA, EV 014.16, year built 2000, Microbiological safety station; Class IIB; Blow flow 2155m ³ / h; Extraction rate 646m ³ / h; Speed variator; Differential pressure pressure detectors in blast and discharge fault detection; HEPA H14 6P7 Panel Type Blow Molding and Discharge Filter; Lighting a waterproof fluorescent strip 36W and four 18W UV strips placed around the filters; Tempered glass front screen with motorized movement .; A turntable equipped with control and signaling buttons .; 316L stainless steel sheets; Dimensions (WxDxH) approximately 1400 x 900 x 2800 mm; Power 230V, 50Hz, 35A; ref [2394]; the lot will be loaded on tautliner by the seller, different loading or packing on additional delivery
176	1	Chamber of stability Elbanton, ETK40, year built 2002, serial number 200202127, Chamber of stability; Overall dimensions (WxDxH) approximately 650 x 650 x 1020 mm; Internal dimensions approximately 400 x 400 x 500 mm; Double-door; Thermostat temperature setting 0 ° / 100 ° C; Refrigerant R134A; Documentation not available; ref [1558]; the lot will be loaded on tautliner by the seller, different loading or packing on additional delivery



Lot	Number	Description
177	1	Chamber of stability Elbanton, ETK40, year built 2002, serial number 200202125, Chamber of stability; Overall dimensions (WxDxH) approximately 650 x 650 x 1020 mm; Internal dimensions approximately 400 x 400 x 500 mm; Double-door; Thermostat temperature setting 0 ° / 100 ° C; Refrigerant R134A; Documentation not available; ref [1568]; the lot will be loaded on tautliner by the seller, different loading or packing on additional delivery
178	1	basket ADS Laminaire, Hood; ref [2946]; the lot will be loaded on tautliner by the seller, different loading or packing on additional delivery
179	1	Microscope Zeiss, Axioscop, Microscope; Eyepieces E-PI 10x / 20; ; Objectives; Achroplan 10x / 0.25; Achroplan 20x / 0.45; Achroplan 40x / 0.65; Plan Neofluar 2.5x / 0.075; Photovideo tube; Sony DXC-930 color professional camera (3 CCD); Lack of cable and camera power supply; ref [345]; the lot will be loaded on tautliner by the seller, different loading or packing on additional delivery
180	1	Glove sealing tester La Calhène, GLT, year built 2007, Glove sealing tester; Transparent plastic cylinder (with a hole for the wrist of the glove) mounted on a removable support; Control panel with ticket printing; Zirconia oxygen analyzer series 350 - PANAMETRICS company; Electric cable rollable 3m; RS232 interface for printer; Wheeled equipment with brake; SIEMENS S7-200 controller; 230V - 50Hz - 6A - 10kA; ref [2031]; the lot will be loaded on tautliner by the seller, different loading or packing on additional delivery
181	1	Glove sealing tester La Calhène, GLT, year built 2000, Glove sealing tester; Transparent plastic cylinder (with a hole for the wrist of the glove) mounted on a removable support; Control panel with ticket printing; Oxygen analyzer; Electric cable rollable 3m; RS232 interface for printer; Wheeled equipment with brake; SIEMENS S7-200 controller; 220V - 50Hz - 8A; ref [2032]; the lot will be loaded on tautliner by the seller, different loading or packing on additional delivery
182	1	Vertical autoclave LEQUEUX, year built 1990, Vertical autoclave; Volume 65 liters; 1 stainless steel basket Ø310mm and height 510mm; Calculation pressure 2.5bar; Calculation temperature 139 ° C; 1 HONEYWELL recorder; 2.55 bar RSP valve; DANFOSS pressure regulator; Sterilization timer 0 - 30 min .; Internal dimensions Ø335mm and height 515mm; Overall dimensions (LxWxH) 800x600x1060mm; ref [2316]; the lot will be loaded on tautliner by the seller, different loading or packing on additional delivery
183	1	Vertical autoclave SUBTIL CREPIEUX, ALV 1061, year built 1996, Vertical autoclave; Tank dimension Ø355mm, height 650mm; Tank volume 60 liters; Material 316L stainless steel; Apparatus tested at 6 bars and approved for 3 bars; Automatic operation and manual filling; Adjustable temperature between 100 ° C and 138 ° C; Sterilization time between 0 and 60 minutes; Audible and visual alarm at the end of the sterilization cycle; Power 230V - 50Hz - 3kW; Overall dimensions (WxDxH in mm) 600x740x960; ref [2456]; the lot will be loaded on tautliner by the seller, different loading or packing on additional delivery
184	1	Centrifugal Clarifier ALFA-LAVAL, MV153S21 1H, year built 1997, serial number 971602, Centrifugal clarifier; Speed 16000 RPM; Max load 7Kg; LEROY SOMER LS 100L T engine; Overall dimensions (WxDxH in mm) 550x800x1750; ref [2494]; the lot will be loaded on tautliner by the seller, different loading or packing on additional delivery
185	1	Centrifugal Clarifier SHARPLES, AMV1221 1HC, year built 1989, serial number A89 1604, Centrifugal clarifier; Speed 16000 RPM; Max load 7Kg; Overall dimensions (WxDxH in mm) 700x700x1790; ref [2495]; the lot will be loaded on tautliner by the seller, different loading or packing on additional delivery
187	1	Centrifugal Clarifier SHARPLES, AMV1221 1HC, year built 1989, serial number A89 1604, Centrifugal clarifier; Speed 16000 RPM; Max load 7Kg; Overall dimensions (WxDxH in mm) 800x650x1510; ref [2497]; the lot will be loaded on tautliner by the seller, different loading or packing on additional delivery





Lot	Number	Description
196	1	Dispersers for sterilization of premises MINNTECH, year built 2005, Dispersers for sterilization of premises; Volume tank 26 liters; Min / Max pressure for Atmospheric liquid at 0.9 bar; Min / Max temperature for liquid 0 ° C to 120 ° C; Min / Max pressure for Atmospheric gas at 0.9 bar; Min / Max temperature for gas 0 ° C to 60 ° C; Material 316L stainless steel; 2 Dry Fog spray nozzles; 2 ARIA R3114B pressure regulators, PS = 30 bar, TS = -20 ° C to 60 ° C without manometer; Quantity 11 DRY FOG humidifiers with storage case .; ref [2039i]; the lot will be loaded on tautliner by the seller, different loading or packing on additional delivery
197	1	Detector ESA, Coularray, Detector; 8 coulometric channels; ref [348]; the lot will be loaded on tautliner by the seller, different loading or packing on additional delivery
198	1	Fridge Friginox, Frigidaire; ref [2505]; the lot will be loaded on tautliner by the seller, different loading or packing on additional delivery
199	1	Modular concentrator for centrifugation Modular concentrator for centrifugation; MidVac Centrifugal Concentrator; o GENEVAC manufacturer; o Model QUC-23050-B00; o Serial number QUC12090116; o Year 2009; o Rotor; § QRC-50CCT-036; § For 50ml conical tubes (28mm x 115mm); § 36 wells o Max speed 1130 rpm; o Max force 250g; o Dimensions (WxDxH) 480x594x300mm; o Power 230V, 50Hz, 3.9A, 950VA; SPEEDTRAP capacitor; o GENEVAC manufacturer; o Model MST-23050-B00; o Serial number MST11090394; o Year 2009; o Min / Max temperature -50 ° C to + 60 ° C; o 1-liter borosilicate glass flask; o Fast defrosting; o Refrigerant R404a; o Dimensions (WxDxH) 212x563x450mm; o Power 230V, 50Hz, 1.8A, 550VA; Vacuum pump ; o ILMVAC manufacturer; o Type 4001773; o MPC205T serial number; o Limited vacuum <2 mbar; o Flow 2 / 2.2m3 / h; Control box and vacuum regulation; o ILMVAC manufacturer; o Type 600037; o Serial number VCB424 cv; o Integrated pilot valve; o Measuring range 1 to 1100 mbar; o Power 90/264 VAC, 1.25A, 30W; ref [2838]; the lot will be loaded on tautliner by the seller, different loading or packing on additional delivery
200	1	Freeze dryer development Christ, Development freeze dryer; ref [2938]; the lot will be loaded on tautliner by the seller, different loading or packing on additional delivery
201	1	Insulator INGENIA, Insulator; 4 glove-gloves PLASTUNION Ø330mm; Transfer type DPTE, Ø400mm with handle; Spray fan of the sterilization product with 6-position potentiometer; 2 filters THE PVC casing; CAMFIL brand; A / N 3204.01.00; Dimension 218x160mm; Flow 50m3 / h; DP 250Pa; 4 directional wheels including 2 wheels with brake; Internal dimensions (WxDxH) 1300x700x900mm; Overall dimensions (WxDxH) 1700x800x1550mm; Power 220V Mono, 50Hz; ref [3112]; the lot will be loaded on tautliner by the seller, different loading or packing on additional delivery
202	1	Insulator INGENIA, CT18, year built 2000, Insulator; 4 glove-gloves PLASTUNION Ø330mm; Transfer type DPTE, Ø400mm with handle; Spraying system of the sterilization product; 2 filters THE PVC casing; CAMFIL brand; A / N 3204.01.00; Dimension 218x160mm; Flow 50m3 / h; DP 250Pa; 4 directional wheels including 2 wheels with brake; Internal dimensions (WxDxH) 1300x700x900mm; Overall dimensions (WxDxH) 1700x800x1550mm; Power 220V Mono, 50Hz; ref [3113]; the lot will be loaded on tautliner by the seller, different loading or packing on additional delivery
203	1	Insulator INGENIA, CT18, year built 2002, serial number 95, Insulator; 4 glove-gloves PLASTUNION Ø330mm; Transfer type DPTE, Ø400mm with handle; Spraying system of the sterilization product; 2 filters THE PVC casing; - CAMFIL brand; - A / N 3204.01.00; - Dimension 218x160mm; - Flow rate 50m3 / h; - Dp 250Pa; 4 directional wheels including 2 wheels with brake; Internal dimensions (WxDxH) 1300x700x900mm; Overall dimensions (WxDxH) 1700x800x1550mm; Power 220V Mono, 50Hz; ref [3114]; the lot will be loaded on tautliner by the seller, different loading or packing on additional delivery



Lot	Number	Description
204	1	Insulator INGENIA, CT19, year built 1998, Insulator; 4 glove-gloves PLASTUNION Ø330mm; Transfer type DPTE, Ø400mm with handle; Spraying system of the sterilization product; 2 filters THE PVC casing; CAMFIL brand; A / N 3204.01.00; Dimension 218x160mm; Flow 50m ³ / h; DP 250Pa; 4 directional wheels with brake; Internal dimensions (WxDxH) 1300x700x900mm; Overall dimensions (WxDxH) 1700x800x1550mm; Power 240V Mono, 50Hz; ref [3115]; the lot will be loaded on tautliner by the seller, different loading or packing on additional delivery
205	1	Insulator INGENIA, CT18, Insulator; 4 glove-gloves PLASTUNION Ø330mm; Transfer type DPTE, Ø400mm with handle; Spraying system of the sterilization product; 2 filters THE PVC casing; - CAMFIL brand; - A / N 3204.01.00; - Dimension 218x160mm; - Flow rate 50m ³ / h; - Dp 250Pa; 4 directional wheels including 2 with brake; Internal dimensions (WxDxH) 1300x700x900mm; Overall dimensions (WxDxH) 1700x800x1550mm; Power 220V Mono, 50Hz; ref [3116]; the lot will be loaded on tautliner by the seller, different loading or packing on additional delivery
206	1	Optical ICP Elemental, : IRIS Intrepid II XDL, year built 2003, serial number 12073, Optical ICP; Overall dimensions (WxDxH): approximately 1500 x 950 x 1500 mm; ref [1725]; the lot will be loaded on tautliner by the seller, different loading or packing on additional delivery
207	1	Freezer FRIGINOX, GN/GNL1, year built 1997, serial number 1812 2452R 4, Freezer; STAR + NEGAT COND AIR Version; Total volume 650 liters; Useful volume 444 liters; Setting range -18 ° C / -25 ° C; 2 stainless steel shelves; Interior all stainless steel; Magnetic door seal; Key lock; Temperature display; Electronic regulation; Room class 4; Compressor type CAJ2428Z; Refrigerant R404A; Electric defrost mode; Overall dimensions (WxDxH in mm) 740x860x2065; Power 230V, 50Hz, 7.5A, 1 kW; ref [2481]; the lot will be loaded on tautliner by the seller, different loading or packing on additional delivery
208	1	Ventilated freezer LIEBHERR, GGPv 6520, serial number 78.167.403.2, Ventilated freezer; Total volume 650 liters; Useful volume 510 liters; Setting range -10 ° C to -26 ° C; 4 shelves Interior all stainless steel; Magnetic door seal; Key lock; Temperature display; Electronic regulation; Refrigerant R404A; Electric defrost mode; Overall dimensions (lxwxh in mm) 770x800x2010; Power 230V, 50Hz, 7.5A, 1 kW; ref [2483]; the lot will be loaded on tautliner by the seller, different loading or packing on additional delivery
209	1	Ventilated freezer BONNET, Ventilated freezer; Volume 440 liters; 4 stainless steel shelves; Key lock; Forced ventilation; Warning light; Overall dimensions (WxDxH in mm) 720x840x2055; ref [2484]; the lot will be loaded on tautliner by the seller, different loading or packing on additional delivery
210	1	Ventilated freezer LIEBHERR, GGPv 6570, serial number 81.660.047.0, Ventilated freezer; Total volume 601 liters; Useful volume 477 liters; 4 shelves Interior all stainless steel; Key lock; Audible alarms open door and elevation temperature; Temperature display; Electronic regulation; R290 refrigerant; Electric defrost mode; Overall dimensions (WxDxH in mm) 720x820x2120; Power 230V, 50Hz, 4A, 600W; ref [2485]; the lot will be loaded on tautliner by the seller, different loading or packing on additional delivery
211	1	Conductivity ORION, 120 Microprocessor conductivity meter, serial number I / 120.372, Conductivity; Power 220V, 30W, 50Hz; ref [2749]; the lot will be loaded on tautliner by the seller, different loading or packing on additional delivery
212	3	spacesuit GETINGE, Diving Bell; 1 diving suit with containment helmet; 2 suits without helmet; ref [2815]; the lot will be loaded on tautliner by the seller, different loading or packing on additional delivery
213	1	Fraction collector WATERS, WFCIII, serial number F12WFC279J, Fraction collector; Standard tube rack ≈ 120 tubes, 12 to 18mm in diameter and 90 to 180mm in height; Operating modes ; - Simple fashion; - Peak mode; - Window mode; - Manual mode; - Sampling mode; Local control of the collector or remotely via the Waters MassLynx® and Empower™ 2 software; Overall dimensions (lxwxh) 286x359x335mm; Power 100VAC / 115VAC / 240VAC, 0.23A; ref [2857]; the lot will be loaded on tautliner by the seller, different loading or packing on additional delivery



Lot	Number	Description
214	1	Vacuum bag control system MULTIVAC, AG800, year built 1994, serial number 6773, Vacuum bag control system; Double bell; Dimensions (LxWxH) 1350x1100x1150mm; Power 380V three-phase, 11kW, 31A; ref [3006]; the lot will be loaded on tautliner by the seller, different loading or packing on additional delivery
215	1	Vacuum bag control system MULTIVAC, AG800, year built 1993, serial number 6497, Vacuum bag control system; Double bell; 4 welding bars 2 in the low position and 2 in the high position; Tilting table; MILLIPORE Opticap XL Filter 4 Capsule 0.2µm; Manometer 0 to -1000mbar with safety pressure switch; Potentiometers empty, gas reinjection, welding; 2-position welding power switch double solder top and bottom or single solder top and bottom; Dimensions (LxWxH) 1560x1100x1150mm (lid lowered, height = 900mm); Power 380V three-phase, 8.5kW, 24A; Supplied without vacuum pump => vacuum pump see FM 3005; ref [3104]; the lot will be loaded on tautliner by the seller, different loading or packing on additional delivery
216	1	Tightness tester SA ATEQ F, serial number 50-3708, Leak tester; Dimensions (W x D x H): 530x370x170mm; ref [3105]; the lot will be loaded on tautliner by the seller, different loading or packing on additional delivery
217	1	Tightness tester SA ATEQ F, serial number 50-3221, Leak tester; Dimensions (W x D x H): 530x370x170mm; ref [3106]; the lot will be loaded on tautliner by the seller, different loading or packing on additional delivery
218	1	basket Flow Sciences, FS 2350, serial number 01-25-02-02, hood; Internal dimensions: about 900 wide x 750 high; ref [1480]; the lot will be loaded on tautliner by the seller, different loading or packing on additional delivery
219	1	Hotplate APT GmbH, POLOS Hotplate 150, serial number L.030.901, Hotplate; Temperature range 50 ° C to 230 ° C; Uniformity of temperature ± 0.5 ° C; Countdown with audible alarm from 1 to 999 seconds; Heating surface 180x180mm; Dimensions (WxDxH) 450x320x200 mm; Power 230V, 50Hz, 550W, 3A; ref [2861]; the lot will be loaded on tautliner by the seller, different loading or packing on additional delivery
220	3	2 Heating modules for column WATERS, TCM, 2 Heating modules for column; Serial number M00TCM385M, K98TCM590M and G01TCM607M; Module G01TCM607M is for room only.; Overall dimensions (L x W x H in mm) 365x130x235; Power 230V, 50Hz, 1A; ref [2533]; the lot will be loaded on tautliner by the seller, different loading or packing on additional delivery
221	3	Bench homogenizer OMNI, GLH-220, year built 2001, Bench homogenizer; Speed range 0 to 30000 RPM.; Homogenizer quantity 3; Serial numbers; 75158; 75191; 75213; Power 230V, 50Hz, 700W; Without the tools; ref [2773]; the lot will be loaded on tautliner by the seller, different loading or packing on additional delivery
222	1	UV spectrophotometer for HPLC WATERS, 481 Lambda Max, year built 1992, UV spectrophotometer for HPLC; Wavelength range 190 to 700 nm; Bandwidth 5 nm; Linearity 2.0 AUFS; 2x10 ⁻⁵ drift at between 200 and 300 nm, 3x10 ⁻⁵ between 300 and 650 nm; 220V / 0.75A power supply; Missing power cable; ref [416]; the lot will be loaded on tautliner by the seller, different loading or packing on additional delivery



Lot	Number	Description
223	1	Sterilizer ARFL, Isoste R Type IS, série SV, serial number 79, Sterilizer; Connection ; Admission of compressed air; Sterilant outlet to the isolator; 220 V power supply socket + on / off switch with 2 fuses; Sterilization function; Manometer for controlling the pressure of compressed air; Programming timer; Sterilization start switch and tank heater operation indicator; Dip tube (aspiration of the sterilizing agent); Suction indicator; Rinsing function residual vapors isolator switch and automatic air flushing indicator (removal of sterilant vapors from the isolator); APA residual solution rinsing function of the evaporator; Button pressurizing the tank to repress the residual solution; Button to depressurize the evaporator and aspirate the rinse solution; Principle; The carrier air of the sterilizing agent is saturated with peracetic acid vapors at a time; By heating at 50 ° C the peracetic acid solution in a tank ("evaporator"); And by bubbling (bubble) in the evaporator of hot and humid air from the laboratory .; This APA-laden air is drawn out of the tank and mixed with the compressed air supplied to the apparatus by a Venturi system. It should be noted that the venturi effect keeps the evaporator in depression which allows its filling by simple aspiration .; To rinse the evaporator at the end of the sterilization cycle, simply put it in overpressure .; Instructions for use + notebook of life; ref [320]; the lot will be loaded on tautliner by the seller, different loading or packing on additional delivery
224	1	Light scattering detector SEDERE, Sedex 45, Light scattering detector; Temperature controller; Gain adjustment; Manual or automatic mode; Like new (use 6 months); Missing power cable; Technical documentation not available; ref [371]; the lot will be loaded on tautliner by the seller, different loading or packing on additional delivery
225	2	2 Leitz projection heads for microscope 2 Leitz projection heads for microscope; ref [377]; the lot will be loaded on tautliner by the seller, different loading or packing on additional delivery
226	1	Steam condensation trap SAVANT, RVT100, Steam trap; Volume 1 liter; Temperature up to -55 ° C; Power supply 110V - 60Hz; Refrigeration trap for the condensation of solvent vapors which contaminate, among other things, vacuum pump oils for rotary evaporators and / or lyophilisers .; ref [378]; the lot will be loaded on tautliner by the seller, different loading or packing on additional delivery
227	1	Spectro atomic absorption Varian, SpectrAA 400, Spectro atomic absorption; Supplied with Varian Zeeman graphite tube atomizer; ref [1727]; the lot will be loaded on tautliner by the seller, different loading or packing on additional delivery
228	1	Luminometer for microplate Berthold, 56-68, serial number 1125, Microplate luminometer; ref [1742]; the lot will be loaded on tautliner by the seller, different loading or packing on additional delivery
229	1	Welder Amis, A450, year built 1998, serial number 84136, Welding machine; Overall dimensions (WxDxH) approximately 610 x 135 x 430 mm; 220 V power supply; Power 2,2 kW; Setting welding time, between 0 and 3 seconds; Setting cooling time, between 0 and 12 seconds; Conforms to CE standards; ref [2023]; the lot will be loaded on tautliner by the seller, different loading or packing on additional delivery
230	1	Chromatography column Millipore, IPP 440 X 500, year built 1998, serial number 440 / 01011 P, Chromatography column; Overall dimensions (WxDxH): approximately 900 x 540 x 1420 mm; ref [2185]; the lot will be loaded on tautliner by the seller, different loading or packing on additional delivery
231	1	Chromatography column Millipore, IPP630X500, year built 2000, serial number 630-0107, Chromatography column; Overall dimensions (WxDxH) approximately 1160 x 750 x 1700 mm; Volume 165 liters; Maximum pressure 3 bar; ref [2186]; the lot will be loaded on tautliner by the seller, different loading or packing on additional delivery
232	1	Chromatography column Millipore, IPP 440 X 500, year built 1998, serial number 440 – 0100 IP, Chromatography column; Overall dimensions (WxDxH): approx: 900 x 340 x 1420 mm; ref [2187]; the lot will be loaded on tautliner by the seller, different loading or packing on additional delivery



Lot	Number	Description
233	1	Chromatography column Novasep, Prochrom L750.1000.VE2, serial number 2507-SC, Chromatography column; Operating pressure 0-2 bar; Operating temperature 5-60 ° C; Year 2014; CE compliant; Atex II 3 G IIB T 4; Mobile on wheels; ref [2241]; the lot will be loaded on tautliner by the seller, different loading or packing on additional delivery
234	1	Column chromatography charger Column chromatography charger; ref [2385]; the lot will be loaded on tautliner by the seller, different loading or packing on additional delivery
235	1	Syringe sampler Hiac/Royco, 3000A, year built 1995, serial number 95020103, Syringe sampler; ref [2398]; the lot will be loaded on tautliner by the seller, different loading or packing on additional delivery
236	1	Sequence detection system THERMO FISCHER, ABI Prism 7000, year built 2002, Sequence detection system; Equipment for detecting and quantifying nucleic acid sequences; PELTIER thermal effect block containing 96 wells; Tungsten / halogen excitation source; Fluorescence detection via 4 positions of the filter and the CCD camera; Dimensions (WxDxH) 390 x 510 x 530 mm; Power 230V, 50Hz, 1.5kVA, 4A; Supplied without the PC .; Installation CD version 1.2.3 of the supplied ABI PRISM 7000 software; User manual and user guide provided; ref [2423]; the lot will be loaded on tautliner by the seller, different loading or packing on additional delivery
237	1	Microplate Luminometer BERTHOLD, MPL/2, year built 2003, Microplate luminometer; ref [2454]; the lot will be loaded on tautliner by the seller, different loading or packing on additional delivery
238	1	Coagulation analyzer SIGMA AMELUNG, Coagulation analyzer; KC 10 A Coagulometer Model; Serial number 01A50169; Model of the CR-A Calculator; Serial number 01W50754; Year -; 6 preheating reagent wells; A preparation area with racks; 2 times 10 incubation wells; 1 block of 10 wells for measurements; 2 pipette holders; Temperature control indicator and incubation indicators; Button for manual operation and button for automatic operation .; Overall dimensions of coagulometer (L x W x H in mm) 475x380x130; Overall dimensions of the calculator (LxWxH in mm) 215x245x100; Power 230V, 50Hz, 100VA; ref [2548]; the lot will be loaded on tautliner by the seller, different loading or packing on additional delivery
239	1	Coagulation analyzer SIGMA AMELUNG, Coagulation analyzer; KC 10 A Coagulometer Model; Serial number 01A50170; Model of the CR-A Calculator; Serial number 01W50755; Year -; 6 preheating reagent wells; A preparation area with racks; 2 times 10 incubation wells; 1 block of 10 wells for measurements; 2 pipette holders; Temperature control indicator and incubation indicators; Button for manual operation and button for automatic operation .; Overall dimensions of coagulometer (L x W x H in mm) 475x380x130; Overall dimensions of the calculator (LxWxH in mm) 215x245x100; Power 230V, 50Hz, 100VA; ref [2549]; the lot will be loaded on tautliner by the seller, different loading or packing on additional delivery
240	1	Filter test Millipore, Steritest rack, serial number 385, Filter test; 48 x 31 x 57 cm; ref [302]; the lot will be loaded on tautliner by the seller, different loading or packing on additional delivery
241	1	fluorometer HOEFER, DyNA Quant 200, fluorometer; Developed specifically for accurate determination of DNA even in the presence of RNA, proteins and / or nucleotides; Also for measuring enzymatic activity based on the separation of methylumbelliferyl substrates and other fluorescent substrates with excitation characteristics and similar emissions; 220V, 50Hz, 15W; Dimensions (WxDxH) 160x340x120mm; Instructions for use in English ref [370]; the lot will be loaded on tautliner by the seller, different loading or packing on additional delivery



Lot	Number	Description
242	1	Dishwasher Lancer, Labsec 13UP, serial number 9I120226, Dishwashing machine; Materials Stainless steel bowl; Power supply Tri 400 VAC + N / 50 Hz / 7.5 kW; External dimensions HT 650 x 715 x 1460 mm .; Dimensions of the bowl 525 x 500 x 635 mm .; Drain + extraction diameter 110 mm; Documentation available; ref [1712]; the lot will be loaded on tautliner by the seller, different loading or packing on additional delivery
243	1	Unit of measure of force SODEXIM, FDT 100, serial number 267/TS, Unit of measure of force; ref [2134]; the lot will be loaded on tautliner by the seller, different loading or packing on additional delivery
244	1	Unit of measure of force SODEXIM, FDT 100, serial number 285/T, Unit of measure of force; ref [2135]; the lot will be loaded on tautliner by the seller, different loading or packing on additional delivery
245	1	Unit of measure of force SODEXIM, FDT 100, serial number 305/TS, Unit of measure of force; ref [2136]; the lot will be loaded on tautliner by the seller, different loading or packing on additional delivery
246	1	Steritest Millipore, Steritest compact, Steritest; ref [2327]; the lot will be loaded on tautliner by the seller, different loading or packing on additional delivery
247	1	Sterilizer Logi-Ste, 2-SR, Sterilizer; ref [2399]; the lot will be loaded on tautliner by the seller, different loading or packing on additional delivery
248	1	Steritest Millipore, Steritest compact, Steritest; ref [2400]; the lot will be loaded on tautliner by the seller, different loading or packing on additional delivery
249	3	Heating block for tubes THERMOLYNE CORPORATION, DB26020, serial number 26000426, Heating block for tubes; 3 blocks of 20 tubes each; 2 blocks type BK165 / 5A; 1 block type BK165 / 7A; The lid is missing; ref [391]; the lot will be loaded on tautliner by the seller, different loading or packing on additional delivery
250	1	Oxygen probe Ingold, 02-sensor-12/120, Oxygen probe; Diameter: 12 mm; ref [519]; the lot will be loaded on tautliner by the seller, different loading or packing on additional delivery
251	1	Centrifuge BIOBLOCK Scientific, Sigma 302, year built 1989, serial number 26857, Centrifuge ; Rotor; Pendulum type; 4 blocks of 7 tubes, Ø17.4mm and height 80mm; G = 864g; 4500rpm speed; Kinetic energy 7000Nm; Power 220V, 50Hz, 320W; ref [1753]; the lot will be loaded on tautliner by the seller, different loading or packing on additional delivery
252	1	Microscope OLYMPUS, SZ30, Microscope; Incomplete; ref [2112]; the lot will be loaded on tautliner by the seller, different loading or packing on additional delivery
253	1	Steaming JOUAN, year built 1988, Drying oven; Ambient temperature range at 220 ° C; Overheating safety .; Power 230V, 50Hz, 600W; External dimensions (LxWxH) 635x635x420 mm; Internal dimensions (WxDxH) 510x510x210 mm; ref [2395]; the lot will be loaded on tautliner by the seller, different loading or packing on additional delivery
254	1	Automatic coagulation analyzer Trinity Biotech, Destiny Plus HG1000P, year built 2009, serial number 09H10791, Automatic coagulation analyzer; Clot detection by optical analysis; Chromogenic tests; Immonoturbidimetric test; Capabilities - 440 bowls .; - 50 samples; - 26 to 31 positions for reagents and controls; - Static data on each sample .; Flow rate 180PT / h and 116 PT and APTT / h; ref [2397]; the lot will be loaded on tautliner by the seller, different loading or packing on additional delivery



Lot	Number	Description
255	1	Vacuum pumping group VACUUBRAND, PC511NT, year built 2012, serial number 36850602, Vacuum pumping group; Vacuum regulator CVC3000; Number of cylinders / stages 2/2; Maximum flow rate 2.0 m ³ / h; Vacuum limit 7 mbar absolute; Against pressure max 1.1 bar absolute; Rated speed 1500 min ⁻¹ ; ATEX II 3G IIC T3 compliance; 2 500ml balloons; Dimensions (WxDxH) 435x243x444 mm; Power 230V, 50Hz, 0.18kW, 1.8A; ref [2844]; the lot will be loaded on tautliner by the seller, different loading or packing on additional delivery
256	1	tongs pliers; Lot of autoclavable scissors forceps; Lot of dissecting forceps; ref [2858]; the lot will be loaded on tautliner by the seller, different loading or packing on additional delivery
257	1	PH probes + Displays ENDRESS+HAUSER, PH probes + Displays; PH measuring probe; o Orbisint; o CPS11-2BA2ESA; o IIX11G - EEXialICT6 / T4 / T3; o pH 0 to 14; o Quantity 1; PH probe support; o CPA440; o PN 6bar; T 130 ° C; o Quantity 1; MYPRO pH probe; o CPM431-A1B2PE; o pH 2 at pH16 / ± 1500mV; o -20 ° C to + 150 ° C; o Umin 12V, Umax 30V, Pmax 750mW; o Quantity 1; LIQUISYS displays; o CPM221-010, amount 2; o CPM223-PR0110, amount 1; ref [2879]; the lot will be loaded on tautliner by the seller, different loading or packing on additional delivery
258	1	Centrifuge Thermo Savant, SPD1010-230, Centrifuge; SpeedVac system; ref [2943]; the lot will be loaded on tautliner by the seller, different loading or packing on additional delivery
259	1	Steaming Mettler, B50, serial number 840602, Drying oven; Double door with 2 leaves; 2 shelves; Class 3; Max temperature 70 ° C; Indicator on, heater and safety overheating; Setpoint knob from 25 ° C to 70 ° C; Over-temperature safety adjustment knob from 25 ° C to 70 ° C; Aeration valve adjustment knob at the rear; Temperature indicator; Overall dimensions (WxDxH) approximately 910 x 700 x 900 mm; Inner size (WxDxH) approximately 800 x 500 x 600 mm; Power 220V, 50Hz, 1600W; ref [3175]; the lot will be loaded on tautliner by the seller, different loading or packing on additional delivery
260	1	UV-Vis spectrometer Thermo Electron Corporation, BioMate 3, UV-Vis spectrometer; Cell chamber 1 position; Spectral Bandwidth 5nm; Xenon lamp type .; Wavelength range 190 to 1100 nm; Drift <1mA / h after powering up; Parasitic light <0.1% T at 220 and 340nm; RS232 socket; Dimensions (WxDxH) 330 x 410 x 235 mm; Printing of analyzes .; ref [1512]; the lot will be loaded on tautliner by the seller, different loading or packing on additional delivery
261	1	Pocket stirrer AES, serial number 73100619, Pocket stirrer; ref [1756]; the lot will be loaded on tautliner by the seller, different loading or packing on additional delivery
262	1	In-situ PCR System Perkin Elmer, GeneAmp® System 1000, year built 1994, In-situ PCR System; Complete system for in situ PCR analysis; High performance heat controller, specially designed to control repetitive temperature profiles to perform the GeneAmp® polymerase chain reaction (PCR) for amplification of nucleic acid in a cell; The apparatus consists of an aluminum block which is heated by heating cartridges and cooled by an internal refrigeration unit .; The sample block has 10 parallel rows of closely spaced vertical slots, each of which holds the glass slide tightly for proper and accurate thermal contact .; The user interface displays the calculated sample temperature and displays information on a 2x20 character fluorescent screen .; RS232C interface .; Sample capacity up to 30; Sample Blocks Standard (25x75mm) and 1.2mm thick glass slides; Temperature range -50 ° C to 99 ° C; With accessories and manual; ref [361]; the lot will be loaded on tautliner by the seller, different loading or packing on additional delivery
263	1	polarograph EG&G Princeton Applied Research, 384A, Polarographer; Simplified control panel; Automatic calculation of the concentration; Storage and retrieval of data and methods; Pre-programmed algorithms; Suppression of background noise; Microprocessor controlled; Programming of several methods of analysis .; Mercury Drop Electrode (SMDE) Model 303A; Stirrer model 305A, with manual and automatic functions. .; ref [1470]; the lot will be loaded on tautliner by the seller, different loading or packing on additional delivery



Lot	Number	Description
264	1	Engine P. Lemmens, 11061900, Engine; Power: 368 W; Speed: 1390 rpm; ref [1738]; the lot will be loaded on tautliner by the seller, different loading or packing on additional delivery
265	1	Dynamometer Imada, DS2-500N, Dynamometer; Capacity 500 Newton (50kgf); 0.1 Newton resolution (0.01kgf); Unit of measurement N / Kgf / lbf; Functions Hold Value / Comparator / Inverted Display; Energies 4 Ni / MH AA batteries - AC adapter output; ref [2115]; the lot will be loaded on tautliner by the seller, different loading or packing on additional delivery
266	1	Sterilizer Logi-Ste, 2-SR, Sterilizer; ref [2320]; the lot will be loaded on tautliner by the seller, different loading or packing on additional delivery
267	1	Sterilizer Logi-Ste, 2-SR, Sterilizer; ref [2321]; the lot will be loaded on tautliner by the seller, different loading or packing on additional delivery
268	1	Electrophoresis Pharmacia Biotech, REC 102, Electrophoresis; ref [2414]; the lot will be loaded on tautliner by the seller, different loading or packing on additional delivery
269	1	Electrophoresis Amersham Biosciences, REC 112, Electrophoresis; ref [2415]; the lot will be loaded on tautliner by the seller, different loading or packing on additional delivery
270	2	Microplate shaker FLOW LABORATORIES, DSG TITERTEK, year built 1985, Microplate shaker; Velocity 140 to 1400 min-1; Overall dimension (WxDxH) 145x215x115mm; Tray size 200x145mm; Power 230V, 50Hz, 30W; ref [2435]; the lot will be loaded on tautliner by the seller, different loading or packing on additional delivery
271	1	Microplate washer TECAN, Colombus plus, year built 2002, Microplate washer; Microprocessor-controlled washer for 96-well plates; Possibility to store up to 30 wash programs; Overall dimension (WxDxH) 290x360x220mm; Power 230V, 50Hz, 60VA; ref [2441]; the lot will be loaded on tautliner by the seller, different loading or packing on additional delivery
272	1	Jet apparatus Behr, Behrotest ET1, Reaction apparatus; ref [2444]; the lot will be loaded on tautliner by the seller, different loading or packing on additional delivery
273	1	Homogenization system PRIONICS, FASTH pcpm, year built 2004, Homogenization system; System that allows the subdivision of particles to obtain a stable dispersion or emulsion .; Overall dimensions (width x depth x height in mm) 780x500x220; Power 230V, 50Hz, 60kW; ref [2465]; the lot will be loaded on tautliner by the seller, different loading or packing on additional delivery
274	1	Automatic suppressor Alltech, ERIS 1000 Autosuppressor, serial number 1005, Automatic suppressor; ref [2539]; the lot will be loaded on tautliner by the seller, different loading or packing on additional delivery
275	1	Digital heated dry bath for Microplates VWR, 4 BLK HEATER EU 230V, year built 2014, serial number 140428001, Digital heated dry bath for Microplates; Digital displays; Ambient temperature range + 5 ° C to 120 ° C; Stability; At 37 ° C ± 0.2 ° C; At 60 ° C ± 0.4 ° C; 2 compartments for 125x85mm microplates; Dimensions (LxWxH) 391x203x89 mm; Power 230VAC, 1.3A, 310W; ref [2854]; the lot will be loaded on tautliner by the seller, different loading or packing on additional delivery
276	1	Digital heated dry bath for Microplates VWR, 4 BLK HEATER EU 230V, year built 2014, serial number 140428002, Digital heated dry bath for Microplates; Digital displays; Ambient temperature range + 5 ° C to 120 ° C; Stability; At 37 ° C ± 0.2 ° C; At 60 ° C ± 0.4 ° C; 2 compartments for 125x85mm microplates; Dimensions (LxWxH) 391x203x89 mm; Power 230VAC, 1.3A, 310W; ref [2855]; the lot will be loaded on tautliner by the seller, different loading or packing on additional delivery



Lot	Number	Description
277	1	Coulometer Coulometer; ref [2944]; the lot will be loaded on tautliner by the seller, different loading or packing on additional delivery
278	1	Capillary electrophoresis Agilent, G1600AX, serial number DE01602341, Capillary electrophoresis; UV / Vis detector type DAD 190 to 600nm; Deuterium lamp; Location of PELTIER effect cooled carousels + 10 ° to -60 ° C; Power 230V, 50Hz, 6W; ref [3097]; the lot will be loaded on tautliner by the seller, different loading or packing on additional delivery
279	1	Sterilizer Logi-Ste, L01, year built 2001, Sterilizer; ref [3117]; the lot will be loaded on tautliner by the seller, different loading or packing on additional delivery
280	1	Sterilizer Logi-Ste, L1 SR, year built 2007, Sterilizer; ref [3118]; the lot will be loaded on tautliner by the seller, different loading or packing on additional delivery
281	1	Sterilizer Logi-Ste, Logi Ste 1, year built 2000, Sterilizer; ref [3119]; the lot will be loaded on tautliner by the seller, different loading or packing on additional delivery
282	1	Sterilizer IS, SV, Sterilizer; ref [3121]; the lot will be loaded on tautliner by the seller, different loading or packing on additional delivery
283	1	Water purification system ELGA, MEDICA 15 DV25, year built 2004, Water purification system; Distribution rate 1.6 l / min at 40 PSI; L tank; Type LA621; Year 2004; Serial number 621L2118073; Volume 25 liters; Max input pressure bar / psi 0.07 / 1; Max. Operating pressure bar / psi 0.07 / 1; Purification system; Type OPTION-E 10; Year 2006; Max pressure 6 bar; Overall dimensions (WxDxH) 550x400x550mm; Power 240V, 50Hz, 110VA; Incomplete equipment Missing display and 1 housing; ref [3123]; the lot will be loaded on tautliner by the seller, different loading or packing on additional delivery
284	2	2 color processors video copy MITSUBISHI Electronics, CP100U, 2 color processors video copy; Supplied without power cable and connection cable; ref [398]; the lot will be loaded on tautliner by the seller, different loading or packing on additional delivery
285	1	Polystat Bioblock Scientific, Polystat 86602, serial number 9021012, Polystat; ref [2543]; the lot will be loaded on tautliner by the seller, different loading or packing on additional delivery
286	1	Vacuum pump GAST, 0523-703Q-G588DX, Vacuum pump; Motor; - Marathon electric; - Model 5KH36KWA510X; - HP 1/4; - Speed 1425rpm; Power 230V, 2.3A; ref [2828]; the lot will be loaded on tautliner by the seller, different loading or packing on additional delivery
287	1	Freezer Caravell, CL300, Freezer; Overall dimensions (WxDxH): approximately 1000 x 700 x 900 mm; ref [1517]; the lot will be loaded on tautliner by the seller, different loading or packing on additional delivery
288	1	PSM engine RPM, 11021408, PSM engine; Power 420 W; Speed 1200 rpm; Conforms to CE standards; ref [1737]; the lot will be loaded on tautliner by the seller, different loading or packing on additional delivery
289	1	Freezer WHIRLPOOL, AFG 347/G, Freezer; Gross Volume 332 liters; Net Volume 290 liters; Class N; Overall dimensions (width x depth x height in mm) 600x560x1800; 5 bins (width x depth x height in mm) 450x430x140; 1 bin (width x depth x height in mm) 450x240x140; 2 shelves (width x depth x height in mm) 480x400x140; Power 1,42kW / 24H, 230V, 50Hz; Broken handle; Damaged bins; ref [1757]; the lot will be loaded on tautliner by the seller, different loading or packing on additional delivery
290	1	Magnetic agitator AES, HG501, serial number P01407, Magnetic agitator ; ref [1763]; the lot will be loaded on tautliner by the seller, different loading or packing on additional delivery



Lot	Number	Description
291	1	Glass bottles Glass bottles; ref [2341]; the lot will be loaded on tautliner by the seller, different loading or packing on additional delivery
292	2	2 Heating modules for column WATERS, COL. HTR. MOD, 2 Heating modules for column; Serial number CHM-005514 and J01CHM 417M; Overall dimensions (L x W x H in mm) 475x200x105; Power 230V, 50Hz, 1.25A, 285VA; ref [2532]; the lot will be loaded on tautliner by the seller, different loading or packing on additional delivery
293	1	Lot glassware Lot glassware; PASTEUR pipette - Length 150mm - Quantity ≈ 400 Volumetric pipettes 25ml - Brand QUALICOLOR® - Volume 25ml ± 0.03ml - 2 lines - Class AS - Safety ball - Quantity 4 Volumetric pipettes 20ml - Brand QUALICOLOR® - Volume 20ml ± 0.03ml - 2 features - Class AS - Safety ball - Quantity 10 Ground-mounted cooling column - Brand LENZ - Diameter olives 8mm - Length 400mm - Condenser head and cone 29/32 - Cooling surface 300cm ² Tube to be mineralized approximately 50x250, volume 300ml approx .; ref [2742]; the lot will be loaded on tautliner by the seller, different loading or packing on additional delivery
294	1	Double pyrolysis oven THERMO ORION, Assy. Dual Pyrol, serial number 11, Double pyrolysis furnace; ref [2774]; the lot will be loaded on tautliner by the seller, different loading or packing on additional delivery
295	1	Lot of lamps Lot of lamps; ref [2782]; the lot will be loaded on tautliner by the seller, different loading or packing on additional delivery
296	1	Mining ramps Barnstead Electrothermal, Extraction ramps; Number of positions 3; Capacity of the balloons 100ml; 10-position temperature controller for each station; Heating indicator light for each station; ref [2807]; the lot will be loaded on tautliner by the seller, different loading or packing on additional delivery
297	1	CELLROLL control unit IBS INTEGRA BIOSCIENCE, serial number 1863288, CELLROLL control unit; ref [2814]; the lot will be loaded on tautliner by the seller, different loading or packing on additional delivery
298	2	Central acquisition KAYE Instrument INC, ACALCE, Central acquisition; Dimensions (W x D x H): 440x520x140mm; ref [3285]; the lot will be loaded on tautliner by the seller, different loading or packing on additional delivery
299	1	Heating block for tubes STUART Scientific, SHT 100D, serial number R000101528, Heating block for tubes; 2 steel 20-well block for Ø 10mm tubes; Digital display; Dimensions (WxDxH) 220x300x120mm; Power 230V, 50Hz, 500W; ref [3287]; the lot will be loaded on tautliner by the seller, different loading or packing on additional delivery
300	2	Piston pump SOTAX, CY 1-50, Piston pump; Dimensions (WxDxH): 100x245x320mm; ref [3236 + 3281]; the lot will be loaded on tautliner by the seller, different loading or packing on additional delivery
301	2	Refrigerated racks for tubes Refrigerated racks for tubes; 1 NALGENE® Labtop Cooler 5116-1600 refrigerated rack for 12 tubes 16-17mm with lid; Dimensions (LxWxH) 197x140x190mm; 1 NALGENE® Labtop Cooler 5116-0012 refrigerated rack for 12 tubes, tube height 125mm with a volume of 0.2ml to 1.5ml; Dimensions (LxWxH) 151x108x125mm; ref [2811]; the lot will be loaded on tautliner by the seller, different loading or packing on additional delivery
302	1	Intrinsically safe temperature and humidity transmitter VAISALA, HMT3603A12BCE1A2DB5A1B, year built 2009, serial number E3310014, Intrinsically safe temperature and humidity transmitter; Classification: II 1G Ex ia IIC T4 (MTB09ATEX028X); Broken temperature / humidity probe; ref [3286]; the lot will be loaded on tautliner by the seller, different loading or packing on additional delivery
303	1	Fridge LIEBHERR, Fridge; Overall dimensions (WxDxH): approximately 500x500x1050mm; ref [3124]; the lot will be loaded on tautliner by the seller, different loading or packing on additional delivery



Lot	Number	Description
304	1	Desiccation box Samplatec, Dry Keeper, Desiccation box; ref [1532]; the lot will be loaded on tautliner by the seller, different loading or packing on additional delivery
305	1	ferry tray; Internal dimensions (L x W x H in mm): 345x250x160; External dimensions (L x W x H in mm): 385x285x165; ref [2528]; the lot will be loaded on tautliner by the seller, different loading or packing on additional delivery
306	1	Fridge Frigéavia, F215, Fridge ; 540x580x1215mm; R12 - 93g; ref [271]; the lot will be loaded on tautliner by the seller, different loading or packing on additional delivery
307	1	crusher MOULINEX, HV3, year built 1990, crusher; Without the grinding tools; ref [2433]; the lot will be loaded on tautliner by the seller, different loading or packing on additional delivery



TROOSTWIJK
INDUSTRIAL AUCTIONEERS & VALUERS SINCE 1930

General conditions Online Auction TroostwijkAuctions.com

1. Definitions

Website:	the website www.TroostwijkAuctions.com , which is maintained by Troostwijk Veilingen B.V., with its registered seat in Amsterdam;
User:	the one who has registered on the Website;
Troostwijk:	Troostwijk Veilingen B.V. and/or its subsidiary/ies or sister company/ies as reported on the Website;
Purchase Sum:	the amount of the highest – allocated – bid increased by: - mark-up above the highest bid and - the V.A.T. owed
Registration:	registration of User on the Website by means of filling in completely the registration form found on the Website;
Bid:	each amount bid by User in the auction for a lot;
Lot:	an article, or a number of articles that are auctioned together (under one number);
Auction:	the public sale of moveable goods organized by Troostwijk via the internet;
Seller:	the one who has commissioned a Lot to be auctioned;
Purchaser:	the User to whom the Lot is allocated;
User's Agreement:	the agreement between Troostwijk and the User;
Purchase Agreement:	the purchase agreement between the Purchaser and the Seller;
Delivery:	the actual delivery of the Lot to the Purchaser or to his authorized representative;
General Terms and Conditions for the the User:	the General Terms and Conditions for access to and use of Website;
General Online Auction Terms and Conditions:	these General Terms and Conditions;
Specific Online Auction Terms and Conditions:	the additional, supplementary to or in departure from the General Terms and Conditions for the User and the General Terms and Conditions of the Online Auction, valid terms and conditions, as reported on the Website for the Auction in question;
Allocation:	the declaration by the "Commissaire PriEUR" of Troostwijk that a Lot or combination of Lots has been allocated to the highest bidder upon payment of the Purchase Price.

Article 2. Applicability

- 2.1 The General Online Auction Terms and Conditions are applicable to the relationship between Sellers or Users on the one hand and Troostwijk on the other in the participation in Auctions.
- 2.2 The applicability of General Terms and Conditions other than the present one, General Terms and Conditions for the User, the Specific Terms and Conditions of the Online Auction, is excluded.
- 2.3 Troostwijk collects and processes personal data of Users, Sellers and Purchasers in accordance with the Privacy Statement on its Website, The General Data Protection Regulation and other applicable laws and regulations. Any person other than Troostwijk is not allowed to use these personal data for its own commercial purposes.

Article 3. The Auction

- 3.1 Troostwijk reserves the right to cancel an Auction, to terminate an Auction earlier than reported on the Website or to extend one. In case of a technical malfunction of the Website, causing it to be not completely accessible and/or inaccessible to Users, Troostwijk has the right to extend the Auction by 24 hours.
- 3.2 The User states by his Registration that he is familiar with and agrees with the special circumstances of an internet auction and with the technical imperfections that can arise. Troostwijk denies any liability for whatever damage that may arise in any way, directly or indirectly, including but not limited to the damage arising from the use of the Website, unless there has been deliberate or conscious negligence by Troostwijk. More particularly, Troostwijk accepts no liability for any damage whatsoever that arises in any way by or from:
 - actions performed by the User that may have been inspired by the information placed on the Website;
 - the impossibility of using the Website (completely) and/or another malfunction in the Website or the supporting system;
 - the Lots not meeting the specifications as reported on the Website;
 - the fact that the information on the Website is incorrect, incomplete or out of date;
 - errors in the software of the Website and/or the supporting system;
 - the unlawful use of systems, including the Website of Troostwijk, by a third party;
 - actions by the Seller after the User has concluded a Purchase Agreement with the Seller.

www.TroostwijkAuctions.com



Article 4. Organization of the Auction

- 4.1 The organization, preparation and carrying out of the Auction is to be done by Troostwijk.
- 4.2 Without having to give any reason, Troostwijk has the authority before or during the Auction:
- not to recognize a Bid as such;
 - to exclude one or several Users from the Auction;
 - to collect objects into Lots, to split Lots or to remove Lots from the auction;
 - to repair mistakes made by Troostwijk in offers and/or allocations, without the User being able to make use of these errors and/or derive any rights from them;
 - to take other measures that are, in its judgment, necessary.
- 4.3 Troostwijk has the authority to set as a condition for participation in certain Auctions and/or bids on certain Lots that a User provide a bank guarantee beforehand to the satisfaction of Troostwijk.
- 4.4 The judgment of Troostwijk concerning that which has occurred during the Auction is binding.

Article 5. Bids; Purchase Agreement

- 5.1 The User can place a Bid on the Website on one or several Lots. Every bid is unconditional, irrevocable and without reservation. Bids are placed exclusive of mark-up and V.A.T. Troostwijk is authorized to place bids on behalf of third parties.
- 5.2 If a Lot is also brought to auction together with one or several other Lots as a combination, this will be reported on the individual page of the Lot. In that case, bids can be placed first on the individual Lots of the combination and after the closing of all individual Lots, bids can be placed on the combined Lot. Individual Lots can be allocated only if the total amount of the highest sustainable bids on the individual lots is higher than the highest sustainable bid on the combination. The combination will be allocated solely if the highest sustainable bid on the combination is higher than the total amount of the highest sustainable bids on the individual lots.
- 5.3 Bids can be placed in the form of a 'static bid' or 'auto bid.' In a static bid, the User places a bid in the form of a fixed amount per Lot. In an automatic bid the User indicates the maximum price he is prepared to pay for the Lot. The auction system sees to it that, after outbidding by a third party, the minimally possible higher bid is introduced in the name of the User, as long as the maximum indicated by the User has not been reached. An automatic bid can be eliminated by the User solely by placing a static bid that is higher than the previous bid.
- 5.4 The Purchase Agreement arises through Allocation. Allocation is generally given to the User who has made the highest Bid.
- 5.5 The Purchaser receives confirmation within 48 hours after the Auction has been closed (not including Saturdays, Sundays and holidays) by email on behalf of the Seller(s) that the Purchase Agreement has been made. If the User does not receive any e-mail within the period mentioned above, this means that his Bid has not been accepted.
The "Commissaire PriEUR" of Troostwijk then has the right not to allocate.
- 5.6 The risk of the Lot(s) is transferred to the Purchaser at the moment of Allocation.
- 5.7 Troostwijk is not a party to the Purchase Agreement but merely mediates in the creation of purchase agreements. If the auction is a forced sale, this will be reported in the Specific Terms and Conditions of the Online Auction.
- 5.8 In the event that the auction occurs in the presence of a Commissaire PriEUR, civil-law notary or court bailiff, he will lead the Auction and the bids placed there and the Allocations.

Article 6. Guarantees, claims and indemnities

- 6.1 In respect of the Lots and possible claims of third parties to these, Troostwijk and/or the Seller will provide no single guarantee of whatever kind. The Purchaser waives all rights except those that are his by mandatory law.
- 6.2 The Lots are sold for what they are worth in the state in which they are found on the date of Allocation with all benefits and burdens attached there to Troostwijk and/or the Seller do not give any indemnity of any kind for visible or hidden defects or any kind of guarantee in connection with completeness, numbers, functioning, usability, saleability, the existence or non-existence of rights of third parties and/or the possibility of transfer to third parties. Defects of whatever kind, disappointed expectations of the Purchaser and/or the receiving third parties do not bestow any rights at all to damages and/or discount. The Purchaser is assumed to have carefully investigated the Lot bought by him beforehand.
- 6.3 If, in respect of the lots, claims by third parties are made on the basis of the retention of ownership, the Purchaser is obligated to hold the lot(s) in question for those third parties, under the obligation to transfer it to the third parties at the first request or to come to a suitable arrangement with the third parties.
- 6.4 The Purchaser indemnifies Troostwijk and/or the Seller against every claim by a third party in connection with the Purchase Agreement.

Article 7. The Purchaser's payment obligations



- 7.1 The Purchaser has the obligation to transfer the Purchase Price to an account number to be indicated by Troostwijk within three days (not including Saturdays, Sundays and holidays) after confirmation of the Purchase Agreement. Payment should be made in Euros or in another currency to be indicated by Troostwijk.
- 7.2 In the event of a late payment of the Purchase Price, 15% of the Purchase Price, being a forfeit amount for collection costs and/or extrajudicial costs will be charged to the Purchaser by Troostwijk, increased by the statutory commercial interest on the outstanding amount, increased by 3% on an annual basis, starting on the day on which the payment should have occurred until the day of effective payment.
- 7.3 Payments are intended first to decrease the costs, then the interest charges, then finally the Purchase Price.

Article 8. Viewing days, auction days, delivery days

- 8.1 Whoever enters the buildings and grounds on viewing days or on the day of delivery does so entirely at his own risk. The instructions of Troostwijk and/or persons called in by Troostwijk are to be followed. Troostwijk and the Seller do not accept any liability for damages arising from entering the buildings or grounds.

Article 9. Delivery

- 9.1 If and as soon as the Purchaser has met all his payment obligations, the Purchaser can pick up the Lot(s) in question during the hours and at the place specified by Troostwijk, after having showing a proper identification. This is the Delivery. The Buyer is obligated to pick up the lot(s) no later than the date specified in the Specific Terms and Conditions of the Online Auction. Troostwijk can stipulate that (a) certain Lot(s) can be picked up only after Lots have been delivered.
- 9.2 After delivery the Purchase Agreement can no longer be terminated or destroyed by the Purchaser.
- 9.3 If it appears that a Lot cannot be delivered because of claims by third parties or because of the fact that the delivery would cause unacceptable damage to the buildings or premises where the Lot is situated or for other reasons appears to be strongly objectionable, Troostwijk is authorized to terminate the Purchase Agreement. This termination occurs by e-mail and/or registered letter to the Purchaser at the address supplied by the Purchaser, after which Troostwijk and/or the Purchaser is/are no longer held to restitution of the amounts already paid by the Purchaser to Troostwijk for the purchase of the Lot(s).
- 9.4 The Purchaser whose Lot(s) hinder the picking up of other Lots is obligated to see to it immediately after reception of an e-mail or other written documents from Troostwijk that the Lot(s) are picked up. The arranging of possible storage by third parties is at the Purchaser's own charge and risk.
- 9.5 The Purchaser is obligated to dismantle or demolish his Lot(s) and to pick them up. He is completely liable for damage done to the property of others in connection therewith. He is further obligated to indemnify Troostwijk and the Seller against all claims by third parties arising from the dismantling, demolishing and/or the picking up of the Lot(s).
- 9.6 During the dismantling, demolishing and picking of the Lot(s), the Purchaser is obligated to follow the instructions of Troostwijk and/or persons called in by Troostwijk.
- 9.7 The Purchaser is obligated to see to it that he or whoever takes care on his behalf of the dismantling, demolishing or transport has the proper required permits. Troostwijk and/or the Seller cannot be held accountable for the lack of the necessary documents and/or the infringement of governmental regulations in the dismantling, demolishing and/or transport by or on behalf of the Purchaser.
- 9.8 In situations in which it is/appears necessary to dismantle buildings for (an) allocated Lot(s), this can occur only through prior consultation with and written authorization from Troostwijk and under these terms and conditions set in the granting of permission.
- 9.9 If Troostwijk stipulates such, a deposit will be made in connection with possible damage to the buildings. If such damage occurs, the deposit will be applied to the payment for repair of the damage, subject to the obligation of the Purchaser to pay compensation for more damage. If no damage results, the deposit will be restored to the Purchaser.

Article 10. Restrictions concerning the sale of certain lots.

- 10.1 Machines and production components are generally sold in conformity with technical specifications as well as with French legal safety norms or regulations. This conformity is attested to either by a seal of conformity (for a machine put into service after 15 January 1981 – (French) Decrees 80-543 and 544) or a CE seal (machines put into service after 15 January 1993 – (French) decrees 93-40) if they have not undergone significant modifications to the safety mechanisms.
- 10.2 When the item for sale does not conform to technical specifications, or to French legal safety norms or regulations, it is reminded to buyers that this item must be imperatively refurbished in regards to the above norms and/or regulations during its installation and/or use after its auction. Buyers commit to refurbish the item in conformity with their enforceable norms and/or regulations. Items are sold as spare parts.
- 10.3 Machines which are non-compliant and not dangerous are sold as unfit for production. They may be sold in the condition as seen:
- 1 – to an individual or legal entity where the material is not destined for use on French territory. It shall be the buyer's responsibility to conform to the legislation of the country where the material is to be used.
 - 2 – to an individual or legal entity having the status of retailer, salvage dealer, re-manufacturer, scrap merchant, scrap metal dealer or



collector who commits beforehand to be responsible for and to ensure conformity to required standards, for possible assignment to a client-operator.

3 – to any buyer as a source of spare parts and who testifies, by accepting the general and particular conditions, not to use or assign the material for production.

10.4 Machines which are considered dangerous ((French) Decrees dated 5 March and 24 June 1993) and non-compliant may only be sold under categories 1 and 2 of the preceding article.

10.5 Buyers formally commit to respect the above criteria by accepting the general and particular conditions of sale.

10.6 The measures contained in articles 10.1 to 10.4 are not applicable in the case of auctions by order of the court held after the vendor has been declared legally bankrupt.

Article 11. Termination

11.1 If the Purchaser does not fulfill any obligation in the Purchase Agreement, including (but not limited to):

(i) not paying the Purchase Price or not paying it completely on time;

(ii) not picking up the Lot(s) on time and/or

(iii) not providing the information required before delivery, the Purchaser is legally in default without further notice of default being required, and Troostwijk can terminate the Purchase Agreement on behalf of the Seller. In that case Troostwijk is free to allocate the Lot(s) to another party without Troostwijk and/or the Seller being liable for any damages.

11.2 In case of termination as intended in 11.1, the Purchaser in default must pay, in addition to the mark-up, a forfeit amount of 25 % of the Purchase Price to cover administrative, storage, insurance and transport costs, etc., subject to the right of Troostwijk and/or the Seller to demand complete compensation for damages.

Article 12. Liability

12.1 The liability of Troostwijk, if and insofar as the other remaining stipulations of the General Terms and Conditions of the Online Auction, the Terms and Conditions for the User and (if applicable) the Specific Terms and Conditions of the Online Auction are applied, will still be limited to the amount to which the liability insurance of Troostwijk accords Troostwijk in the instance in question, increased by the amount of excess according to the policy in question, or, if it is less, to the invoiced amount that is involved with the commission. This limitation does not apply in the event of deliberate or gross negligence by Troostwijk.

12.2 Troostwijk is not liable for indirect or consequential loss. Further, all liability of Troostwijk in connection with any defect in the Lot(s) or in respect of (alleged) infringement of the rights of (the intellectual property of) third parties is excluded. The Purchaser declares that he is familiar with the fact that, in respect of Lot(s), possible rights (of intellectual property) rest with third parties.

12.3 In consulting with third parties, Troostwijk will take the necessary caution into consideration. Troostwijk is also not liable for possible shortcomings of these third parties.

Article 13. Adjustments; Effect

13.1 If and insofar as any stipulation of the General Terms and Conditions of the Online Auction is null and void or is nullified, the remaining stipulations will remain undiminished in force. Troostwijk will then determine a new stipulation to replace the null/nullified stipulation, by which the intent of the null/nullified stipulation will be taken into consideration.

13.2 Troostwijk can, in addition to these General Online Auction Terms and Conditions, declare the Specific Online Auction Conditions to be applicable. Notification of the Specific Online Auction Terms and Conditions will be made before the Auction. If and insofar as the Specific Online Auction Terms and Conditions are in contradiction with the General Terms and Conditions of the Online Auction, the Specific Online Auction Terms and Conditions will have preference.

13.3 Departure from these General Terms and Conditions of the Online Auction is permitted only if is fixed in writing by an authorized representative of Troostwijk.

13.4 Troostwijk reserves the right to amend these General Terms and Conditions of the Online Auction. Amendments will take effect 24 hours after these have been sent by e-mail to the User. These terms and conditions replace all previous general terms and conditions, unless explicitly stated otherwise by Troostwijk.

Article 14. Applicable law

14.1 Dutch law is applicable to these General Terms and Conditions of the Online Auction and the legal relationships that are associated with the Auction.

14.2 The Dutch text of the General Terms and Conditions of the Online Auction is the original text. In the event that the General Terms and Conditions of the Online Auction are used in several languages; the Dutch text will therefore be given preference in case of lack of clarity or



contradictions.

14.3 The District Court Amsterdam is authorized (subject to the possibility of appeal and to laws that state otherwise) to decide in differences arising from these terms and conditions, to the exclusion of every other instance.

Did you know?

- we organise auctions in **25 countries**
- we have **1,6 million** page views on a top day

The European Online Auctioneer and Valuer

1300 Auctions

Troostwijk conducts
annually **1300** auction sales
all over Europe

Statistics

- Every year we deal with **50.000** bidders
- from 95 different countries
- over 500.000 registrations

15 Countries

Troostwijk has
own offices
in 15 European countries

85 Years

Troostwijk is conducting
auctions since 1930 and
has 85 years of experience